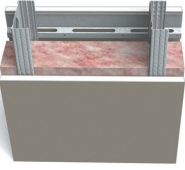
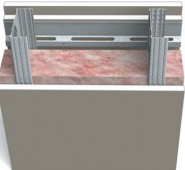
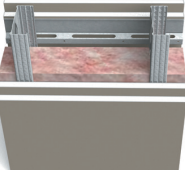
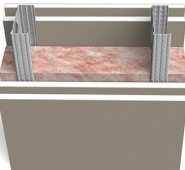
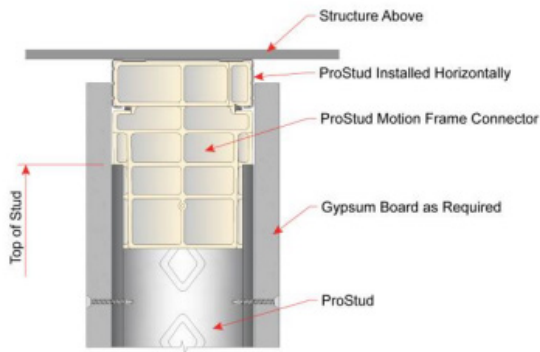
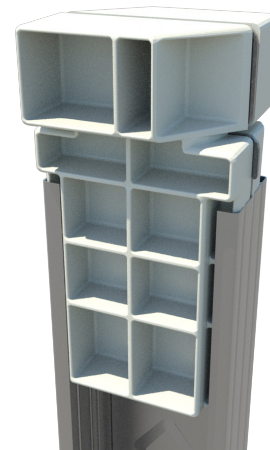


## ProSTUD® 2-1/2" Motion Frame Sound Assemblies

| Partition type   | Assembly Description  |            | STC Rating / Test Report            |
|--|---|------------|-------------------------------------|
|  |   |            | ProSTUD® 25 (15mil)                 |
|   | ProSTUD® Motion Frame Connector<br>2-1/2" 15mil ProSTUD®<br>3-1/2" R-13 Insulation<br>RC-Deluxe® on one side<br>1 layer 5/8" Gypsum each side     | @ 24" o.c. | 51<br><a href="#">RAL™-TL24-313</a> |
|   | ProSTUD® Motion Frame Connector<br>2-1/2" 15mil ProSTUD®<br>3-1/2" R-13 Insulation<br>2 layers 5/8" Gypsum with RC-Deluxe®<br>1 layer 5/8" Gypsum | @ 24" o.c. | 56<br><a href="#">RAL™-TL24-314</a> |
|   | ProSTUD® Motion Frame Connector<br>2-1/2" 15mil ProSTUD®<br>3-1/2" R-13 Insulation<br>RC-Deluxe® on one side<br>2 layers 5/8" Gypsum each side    | @ 24" o.c. | 60<br><a href="#">RAL™-TL24-315</a> |
|  | ProSTUD® Motion Frame Connector<br>2-1/2" 15mil ProSTUD®<br>3-1/2" R-13 Insulation<br>2 layers 5/8" Gypsum each side                              | @ 24" o.c. | 55<br><a href="#">RAL™-TL24-316</a> |



### New Construction



#### Notes:

- Sound assemblies are certified by Riverbank Acoustical Labs.
- NVLAP accredited for ASTM E90 & E413, ISO Certified.
- See STC test reports at [www.clarkdietrich.com](http://www.clarkdietrich.com) for detailed requirements of construction of wall assembly. Contact ClarkDietrich Technical Services at 888-437-3244 for questions about sound assemblies.

For Resilient Channel Installation Guidelines  
see: [www.clarkdietrich.com/RC](http://www.clarkdietrich.com/RC)

Visit [itools.clarkdietrich.com](http://itools.clarkdietrich.com) for a complete list of sound ratings.