

## Table of Contents

### TABLE OF CONTENTS

<b>Metal Beads &amp; Trims</b>	<b>3-7</b>
Standard Corner Beads	3-4
Bullnose Corner Beads	5
Fine Mesh Bead	5
Trims & Control Joints	6-7
<b>Paper-Faced Beads &amp; Trims</b>	<b>8-10</b>
Standard Corner Beads	8-9
Bullnose Corner Beads	9-10
L-Trim	10
<b>Vinyl Beads &amp; Trims</b>	<b>11-22</b>
Standard Corner Bead	11-12
Inside Corner Bead	12
UltraBEAD	12
Bullnose Corner Bead	13-16
Chamfered Bead	16
Commercial Beads	17-18
Control & Expansion Joints	19
Partition End Caps	20
Shadow Reveals	20
Channel Reveals	21-22
<b>Strait-Flex® Drywall Framing Products</b>	<b>23-40</b>
Overview	23
Flexible Corner Bead - Paper-Faced	24-25
Flexible Corner Bead - Composite	26-27
Premium Trims & Tapes	28-30
X-Crack	31-32
Patches	33-35
Stick Corner Beads - Composite	36
Stick Corner Beads - Paper-Faced	37
Tools & Accessories	38-40
<b>References</b>	<b>41-43</b>
Accessory Specifications	41
Patent/Trademarks	42
Warranty	42
Material Certification	43
Manufacturing and Sales Locations	43

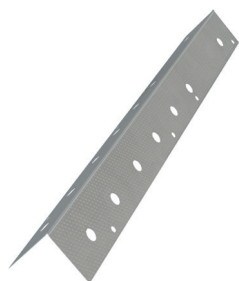
## Metal Beads and Trims

Traditional metal drywall beads and trims provide crisp, clean and straight protection for gypsum wallboard construction. Available in a wide selection of products and sizes, metal is the versatile choice for almost any drywall finish condition. Metal beads and trims can be nailed, screwed, stapled or clinched in place and finished with joint compound. They are low-cost, easily applied and provide high-quality, long-lasting professional finishes.

- Strong; dent- and impact-resistant
- Precision manufactured ensuring straight, sharp and crisp edges and corners
- Corrosion-resistant
- Alternate lengths available upon request (setup charges may apply)
- All ClarkDietrich metal bead meets ASTM C1047 requirements

## Standard Corner Beads

### 103 Deluxe® Corner Bead



ClarkDietrich 103 Deluxe® corner bead combines a unique manufacturing process, with specially enhanced steel to provide consistent, high-quality finishing, and protection at drywall corners. Nail, staple, screw or clinch into place.

Product Code	Size		Pcs/Ctn	Ctns/Skid
	Width	Length		
CBU (dull finish)	1-1/4" x 1-1/4"	8'-0"	63	48
		9'-0"	56	48
		10'-0"	50	48
		12'-0"	42	48

### Quicksilver™ Corner Bead



Quicksilver™ corner bead is a hot-dipped, galvanized bead that offers superior corrosion protection. This bead is ideal for humid, moisture-prone conditions. Quicksilver corner bead provides a high-quality finish and protection at drywall corners. Nail, staple, screw or clinch into place.

Product Code	Size		Pcs/Ctn	Ctns/Skid
	Width	Length		
CBS (shiny finish)	1-1/4" x 1-1/4"	8'-0"	63	48
		9'-0"	56	48
		10'-0"	50	48
		12'-0"	42	48

### West Coast Corner Bead (Premium and Standard Finish)



West coast corner bead is used to provide an economical finish and protection at drywall corners. This traditional finishing product is nailed, stapled, screwed or clinched into place. Premium features an enhanced coating that facilitates mud-adhesion.

Product Code	Size		Pcs/Ctn	Ctns/Skid
	Width	Length		
DWCB	1-1/4" x 1-1/4"	8'-0"	75	48
		9'-0"	67	48
		10'-0"	60	48
		12'-0"	50	48

Not available in all geographic areas.

## Standard Corner Beads

### Clinch-On Dull Corner Bead

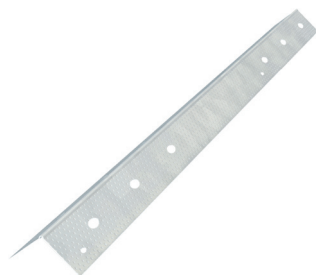


Clinch-On corner bead's knurled and perforated flanges offer superior compound adhesion for smooth, straight finishes. Corner bead attachments are accomplished by nailing, stapling, screwing or clinching through the flanges.

Product Code	Size		Pcs/Ctn	Ctns/Skid
	Width	Length		
CBCO (dull gray)	1-1/4" x 1-1/4"	8'-0"	63	48
		9'-0"	56	48
		10'-0"	50	48
		12'-0"	50	48

Not available in all geographic areas.

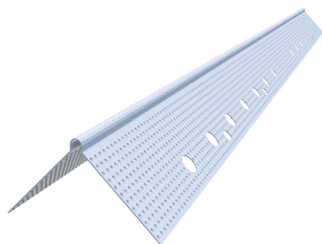
### Clinch-On Hot-Dipped Corner Bead



Clinch-On hot-dipped corner bead offers the identical roll-formed precision as its counterpart. Hot-dipped galvanized metal corner bead provides enhanced corrosion protection and reinforcement at exposed 90° corners. Flanges are knurled and perforated to ease joint compound adhesion and nail attachment.

Product Code	Size		Pcs/Ctn	Ctns/Skid
	Width	Length		
CBCS (shiny)	1-1/4" x 1-1/4"	8'-0"	63	48
		9'-0"	56	48
		10'-0"	50	48
		12'-0"	50	48

### GhostBead® Square Corner Bead



GhostBead® square corner bead flanges are deeply knurled and perforated for excellent joint compound adhesion. GhostBead® corner bead is primed with a white surface treatment to blend with joint compound. This traditional drywall finishing product is nailed, stapled, screwed or clinched into place.

Product Code	Size		Pcs/Ctn	Ctns/Skid
	Width	Length		
GBS	1-1/4" x 1-1/4"	8'-0"	63	48
		9'-0"	56	48
		10'-0"	50	48
		12'-0"	42	48



## Bullnose Corner Beads

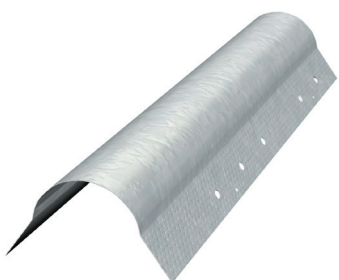
### Splayed Corner Bead



ClarkDietrich's 135° corner bead, also referred to as splayed or off-angle bead, provides a clean, crisp finished look at off-angle intersections. Specially enhanced steel for corrosion protection and superior compound adhesion, it's easy to attach and finish.

Product Code	Size		Pcs/Ctn	Ctns/Skid
	Width	Length		
CB12 (dull finish)	1-1/4" x 1-1/4"	8'-0"	63	48
		10'-0"	50	48

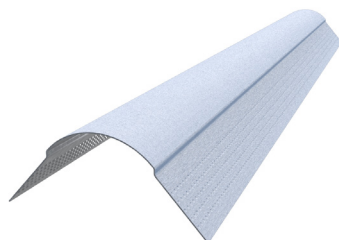
### Bullnose 90° Corner Bead



Bullnose corner bead is used to create a smooth, rounded look to standard drywall corners. Bullnose adds contemporary styling and a sense of openness to any room. Bullnose bead is nailed, screwed or stapled in place and finished with joint compound.

Product Code	Size		Pcs/Ctn	Ctns/Skid
	Radius	Length		
CBB	3/4"	8'-0"	50	40
		9'-0"	45	40
		10'-0"	40	40

### GhostBead® Bullnose Corner Bead

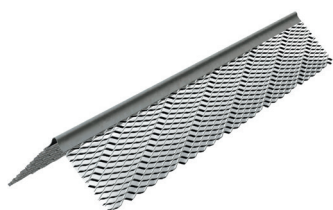


GhostBead® bullnose bead is nailed, screwed or stapled in place and finished with joint compound. GhostBead® is primed with a white surface treatment to blend in with joint compound. GhostBead® Bullnose to 90° transition caps are available to provide a smooth transition to baseboard or corner molding. They install quickly and easily and can be used with metal, vinyl or paper-faced bullnose corner bead.

Product Code	Size		Pcs/Ctn	Ctns/Skid
	Width	Length		
GBB	3/4"	8'-0"	50	40
		9'-0"	45	40
		10'-0"	40	40
		12'-0"	33	40

## Fine Mesh Corner Bead

### Mini-Bead™ 800 and 900 Corner Bead



Mini-Bead™ 800 and 900 are fine-mesh corner beads used to provide corner reinforcement. Mini-Bead 800 has 1/16" grounds for one-coat veneer plaster and 90 keys per linear foot for excellent bonding and strong corners. Mini-Bead 900 has 3/32" grounds for two-coat veneer plaster systems.

Product Code	Size			Pcs/Ctn	Ctns/Skid
	Grounds	Width	Length		
MB80 (galvanized)	1/16"	1-1/4"	8'-0"	60	25
MB90 (galvanized)	3/32"	1-1/4"	10'-0"	60	25
ZB80 (zinc)	1/16"	1-1/4"	10'-0"	60	25
ZB90 (zinc)	3/32"	1-1/4"	10'-0"	60	25

**Note:** Zinc Mini-Beads should be used in exterior finish systems.

## Trims and Control Joint

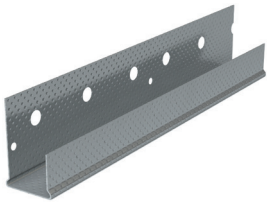
## Metal J-Trim #400



A galvanized steel casing reveal that provides maximum corrosion protection and neat finished edges to drywall terminations around door and window openings. Delivers clean trim lines at intersections or where gypsum panels abut dissimilar surfaces.

Product Code	Size		Pcs/Ctn	Ctns/Skid
	Width	Length		
M401	1/2"	8'-0"	50	42
		10'-0"	50	42
M402	5/8"	8'-0"	50	42
		10'-0"	50	42

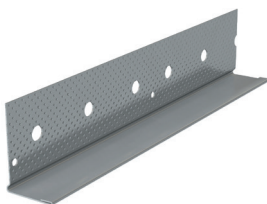
## Metal U-Trim /"Muddable J" #200



U-trim or "Muddable J", in some markets, provides maximum protection and facilitates finished edges on gypsum panels around door and window openings, and when wallboard abuts dissimilar surfaces, such as suspended ceilings, beams, plaster, masonry and concrete. It's easily installed by sliding trim over the edge of the board and nailing/screwing through the knurled (long) flange.

Product Code	Size		Pcs/Ctn	Ctns/Skid
	Width	Length		
M20A	1/2"	8'-0"	50	42
		10'-0"	50	42
	5/8"	8'-0"	50	42
		10'-0"	50	42

## Metal "Muddable" L-Trim #200-B



Provides a clean finished edge at door and window openings or when wallboard abuts dissimilar surfaces, such as suspended ceilings, beams, plaster, masonry and concrete. L-trim is easily attached with screws or nails. A hemmed front flange provides rigidity.

Product Code	Size		Pcs/Ctn	Ctns/Skid
	Width	Length		
M20B	1/2"	8'-0"	50	44
		10'-0"	50	44
	5/8"	8'-0"	50	44
		10'-0"	50	44

## 093 Zinc Control Joint

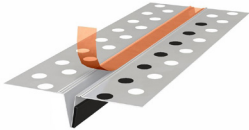


093 zinc control joint is applied between abutting gypsum panels, and is used to relieve stresses of expansion and contraction of drywall and veneer plaster systems in large ceiling and wall expanses over 30' in length. 0.013 zinc for increased corrosion resistance.

Product Code	Size		Pcs/Ctn	Ctns/Skid
	Grounds	Length		
ZNCJ	3/32"	10'-0"	25	20

**Note:** Where fire and sound control are prime considerations, an approved seal must be installed behind the control joint.

## FAS-093X Fire Rated Control Joint



A composite control joint with intumescent tape factory applied to one side of the back of the control joint. The FAS-093X has been tested according to UL-2079 "Test For Fire Resistance of Building Joint Systems" and is used to relieve stresses of expansion and contraction of drywall interior partitions running in a horizontal or vertical direction.

Product Code	Size		Pcs/Ctn	Ctns/Skid
	Grounds	Length		
FAS-093X	3/32"	10'-0"	20	25

## Paper-Faced Beads and Trims

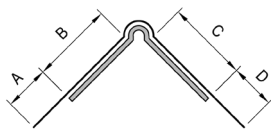
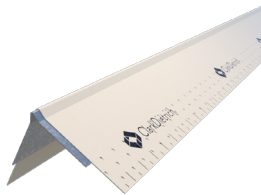
Paper-faced metal beads and trims combine galvanized metal with high-grade paper tape to provide cost-effective, problem-free, compound-embedded drywall finishing. Our products allow the joint compound applied to the underside to seep through perforations in the paper to provide superior adhesion and bonding to gypsum. Corner and edge cracking are virtually eliminated because beads float with the gypsum, independent of framing movement or settling.

They're available in a number of different widths to suit most wallboard applications. Wider flange beads are used to cover imperfect corners, while shorter flanges are used to achieve maximum efficiency.

- Substantially reduces joint compound consumption and eliminates one finish coat
- Does not require nails, staples, screws or crimps
- Standard lengths are 8' and 10'. Alternate lengths available upon request (setup charges may apply)
- All ClarkDietrich metal bead meets ASTM C1047 requirements

## Standard Corner Beads

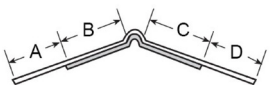
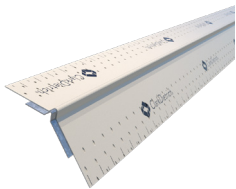
### Paper-Faced Corner Bead



90° outside corner tape-on bead virtually eliminates corner cracks, edge chips and nail pops. Applied using joint compound, the beads don't require mechanical fasteners. Helps reduce labor and material costs by reducing the amount of joint compound needed, and also eliminating one pass of finishing.

Product Code	Style	Dimensions (in)				Pcs/Ctn	Ctns/Skid
		A	B	C	D		
CD1-WU	Standard Leg	5/8	1/2	3/4	5/8	50	40
CD1-WE	Equal Leg	3/4	3/4	3/4	3/4	50	40
CD1-XWU	Extra Wide	5/8	7/8	5/8	3/4	50	40
CD1-XWE	Extra Wide Equal	5/8	7/8	7/8	5/8	50	40
CD1-SWE	Super Wide Equal	5/8	1-1/8	1-1/8	5/8	50	40

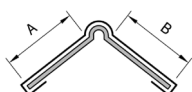
### Paper-Faced Splayed Corner Bead



High-performance, off-angle tape-on bead, also known as splayed or 135° corner bead, is used to provide a strong, smooth finish for outside off-angle drywall intersections.

Product Code	Style	Dimensions				Pcs/Ctn	Ctns/Skid
		A	B	C	D		
CD1-O	Off-Angle	1/2"	3/4"	5/8"	5/8"	50	40

### Paper-Faced Square Nail-On Corner Bead

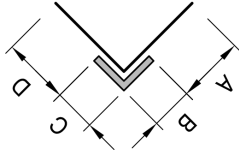
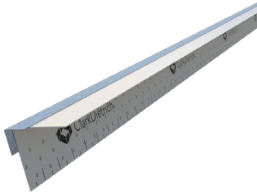


Paper-faced nail-on beads combine galvanized metal corner and edge protection with high-grade paper to provide cost-effective, problem-free outside drywall corner finishing. Nail-on bead is applied in the same manner as traditional metal and vinyl beads. Nails or mechanical fasteners are used to secure the bead to the wallboard.

Product Code	Style	Dimensions		Pcs/Ctn	Ctns/Skid
		A	B		
CD1-UB	Super Wide Angle	1-1/4"	1-1/4"	50	40

## Standard Corner Beads

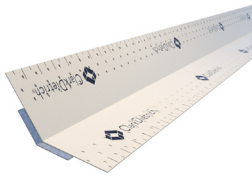
### Paper-Faced Inside Corner Bead



Tape-on inside 90° paper-faced corner bead provides very straight and precise inside corners. The rigid, steel-reinforced inside corners provide a durable guide to achieve exceptionally straight and sharp inside corners. Embed in joint compound and press firmly into place. Remove excess compound with a drywall knife.

Product Code	Style	Dimensions				Pcs/Ctn	Ctns/Skid
		A	B	C	D		
CD2-E	Standard Angle	5/8"	3/8"	3/8"	5/8"	50	40

### Paper-Faced Inside Splayed Corner Bead

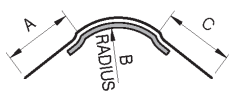
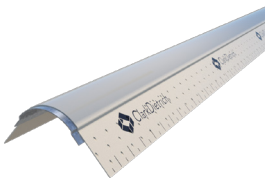


Off-angle tape-on 135° inside bead is used to achieve a crisp, clean, straight-finished inside off-angle drywall finish. As with all tape-on beads, off-angle bead is applied using joint compound. No mechanical fasteners are required.

Product Code	Style	Dimensions				Pcs/Ctn	Ctns/Skid
		A	B	C	D		
CD2-O	Off-Angle	5/8"	5/8"	5/8"	5/8"	50	40

## Bullnose Corner Beads

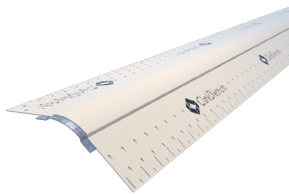
### Paper-Faced Bullnose Tape-On



3/4" tape-on bullnose corner bead is used to create a smooth, rounded look to standard drywall corners. It adds contemporary styling and a sense of openness to any room. Apply in the same manner as all other tape-on beads. Gypsum boards must be cut back 3/4" to accommodate the bullnose and ensure a flush fit.

Product Code	Style	Dimensions			Pcs/Ctn	Ctns/Skid
		A	B	C		
CD1-B	Standard	7/8"	3/4"	7/8"	50	40

### Paper-Faced Bullnose Splayed Tape-On

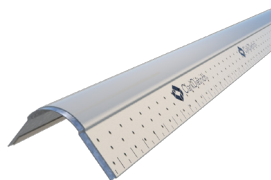


Paper-faced tape-on off-angle bullnose bead is applied in the same manner as 90° paper bead. Joint compound is used to embed the paper-faced bead to the wallboard paper. The result is a clean, crisp, rounded off-angle corner that will not crack or chip.

Product Code	Style	Dimensions			Pcs/Ctn	Ctns/Skid
		A	B	C		
CD1-OBN	Off-Angle	1"	3/4"	1"	50	40

## Bullnose Corner Beads

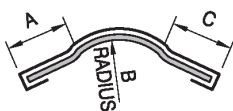
### Paper-Faced Bullnose Nail-On



3/4" nail-on bullnose corner bead is used to create a smooth, rounded look to standard drywall corners. Nail-on bullnose adds contemporary styling and a sense of openness to any room. Nails or mechanical fasteners are used to secure the bead to the wallboard.

Product Code	Style	Dimensions			Pcs/Ctn	Ctns/Skid
		A	B	C		
CD1-BN	Standard	5/8"	3/4"	5/8"	50	40

### Paper-Faced Bullnose Splayed Nail-On



Off-angle nail-on bullnose bead, also known as splayed bullnose or 135° bullnose corner bead, is used to provide a rounded bullnose finish for outside off-angle drywall intersections. Nails or mechanical fasteners are used to secure the bead to the wallboard.

Product Code	Style	Dimensions			Pcs/Ctn	Ctns/Skid
		A	B	C		
CD1-BNSN	Off-Angle	5/8"	3/4"	5/8"	50	40

### Paper-Faced Inside Bullnose

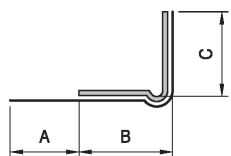
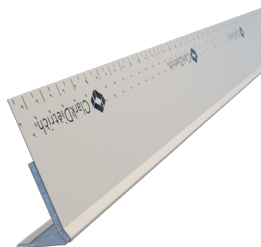


Inside bullnose corner tape-on beads are embedded in joint compound and pressed firmly into place. Excess compound is removed with a drywall knife or wiped clean with a rag.

Product Code	Style	Dimensions			Pcs/Ctn	Ctns/Skid
		A	B	C		
CD2-B	Standard	5/8"	3/4"	5/8"	50	40

## L-Trims

### Paper-Faced L-Trim



L-trims are used to finish the ends of wallboard where it abuts dissimilar surfaces, such as suspended ceilings, beams, plaster, masonry or untrimmed door and window jambs. Applied in the same manner as all other tape-on beads-joint compound embeds the paper-faced bead to the wallboard paper.

Product Code	Style	Dimensions			Pcs/Ctn	Ctns/Skid
		A	B	C		
CDL-3/8	3/8"	3/4"	1-1/16"	7/16"	50	40
CDL-1/2	1/2"	3/4"	15/16"	9/16"	50	40
CDL-5/8	5/8"	1/2"	1-1/16"	11/16"	50	40
CDL-3/4	3/4"	1"	15/16"	13/16"	50	40
CDL-1	1"	7/8"	1-3/16"	1-1/16"	50	40
CDL-1-1/8	1-1/8"	7/8"	1-1/16"	1-3/16"	50	40
CDL-1-1/4	1-1/4"	7/8"	15/16"	1-5/16"	50	40



## Vinyl Drywall Beads and Trims

Our extensive portfolio is the result of years of listening and collaboration. We've worked with professionals across the building industry to identify the market's needs and develop innovative products. What's more, our national distribution network offers you quick turnaround on orders. Whenever you have a question, our experienced customer service experts are on call to provide answers and assist you with technical support.

### COLOR LEADERSHIP

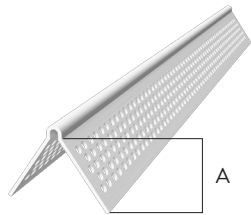
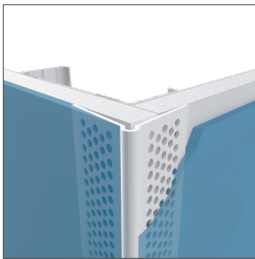
The value of aesthetics isn't lost on ClarkDietrich, especially when it comes to impeccably finished wall and ceiling surfaces. In addition to our standard white vinyl accessories, we've taken the lead in stocking vinyl accessories in gray, tan, black and brown.

If standard colors won't meet the aesthetic requirements for the job, our custom color program, VinylColor™ Extrusions, is the answer. Just provide a sample of the color that you would like us to match and we will send back a color-matched product sample and quote for your approval. For more information contact our Customer Service Team at 1-800-648-4695.



## Standard Corner Beads

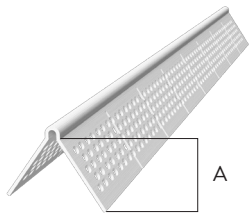
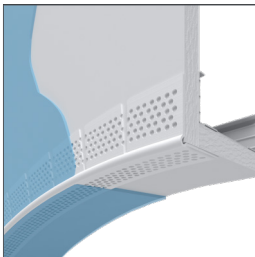
### PRO-90 Corner Bead



Extra rigid vinyl corner bead designed for stiffness and strength. A slight radius on the nose makes for easy, smooth finishing.

Product Code	(A) Flanges	Length	Pcs/Ctn
PRO90-8	1-1/4"	8'-0"	50
PRO90-9	1-1/4"	9'-0"	50
PRO90-10	1-1/4"	10'-0"	50
PRO90-12	1-1/4"	12'-0"	50

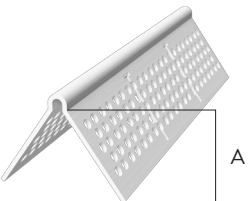
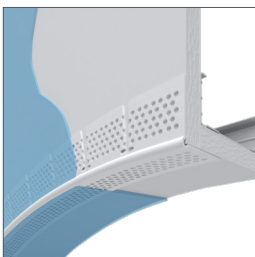
### PRO-90 Archway



Extra rigid, vinyl archway designed with a slotted flange that easily forms to curves and arches. The radius on the nose aides in smooth and easy finishing.

Product Code	(A) Flanges	Length	Pcs/Ctn
PRO90 A-8	1-1/4"	8'-0"	50
PRO90 A-10	1-1/4"	10'-0"	50
PRO90 A-12	1-1/4"	12'-0"	50

### PRO-90 Combi Bead

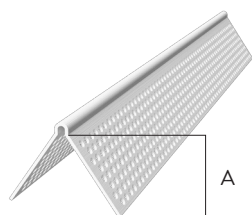
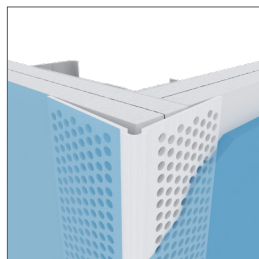


Designed with a "T" slotted flange to create straight-to-curve arches by simply cutting the ends of "T" slots where an arch or curve is desired.

Product Code	(A) Flanges	Length	Pcs/Ctn
PRO90 COMBI-8	1-1/4"	8'-0"	50
PRO90 COMBI-10	1-1/4"	10'-0"	50

## Standard Corner Beads

### PRO-90 Jumbo Corner Bead

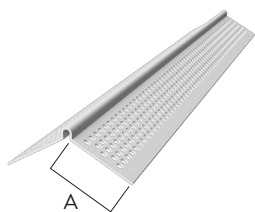
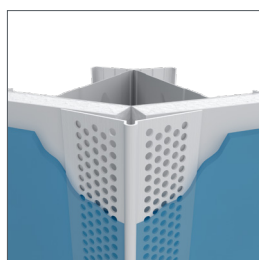


Designed with extra wide, 1-3/4" flanges to cover two layers of 5/8" drywall.

Product Code	(A) Flanges	Length	Pcs/Ctn
PRO90175-8	1-3/4"	8'-0"	40
PRO90175-9	1-3/4"	9'-0"	40
PRO90175-10	1-3/4"	10'-0"	40

**Note:** Jumbo Archway available with slotted flange in 10' length. To order, add an A to product code, example: PRO90175 A-10.

### PRO Splayed Corner Bead

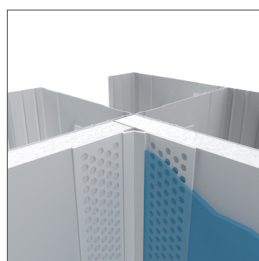


Adjustable corner bead designed for off-angle outside corner conditions from 120° to 140°.

Product Code	(A) Flanges	Length	Pcs/Ctn
PROSB125-8	1-1/4"	8'-0"	70
PROSB125-9	1-1/4"	9'-0"	70
PROSB125-10	1-1/4"	10'-0"	70

## Inside Corner Bead

### Adjustable Inside Corner Trim

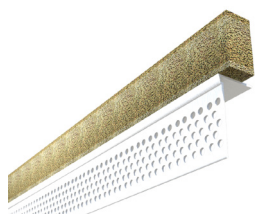


Adjustable inside corner hinge with shoulders designed to keep the corner straight during installation. Adjustable from 80° to 100°.

Product Code	(A) Flanges	Length	Pcs/Ctn
ACT125-8	1-1/4"	8'-0"	70
ACT125-9	1-1/4"	9'-0"	70
ACT125-10	1-1/4"	10'-0"	70

## UltraBEAD - Fire, Smoke & Sound

### "Fire Rated" UltraBEAD

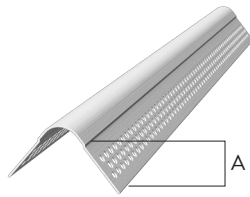
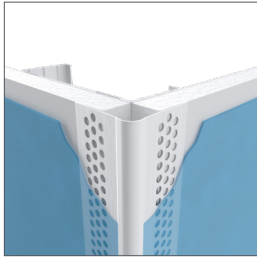


Vinyl L-Bead with proprietary compressible foam creates an easy attachment that is attained with staples through the bead flange. Multiple perforations along the 1-1/8" flange enhance strong compound adhesion and the raised shoulder provides for a flush finish. Rigid vinyl is rust proof, dent resistant and easy to field cut without distorting the profile or leaving sharp edges and burrs. When used in conjunction with UltraTRAK slotted deflection track or deep leg deflection tracks, provides joint protection up to 3/4" for a 1 or 2 HR concrete deck Head of Wall Joint System at 60% compression.

Product Code	Width	Length	Pcs/Ctn	Ctns/Skid
UltraBead	1/2"	8'	40	
UltraBEAD with Rip Bead®	1/2"	8'	30	

## Bullnose Corner Beads

### 3/8" Bullnose Corner Bead

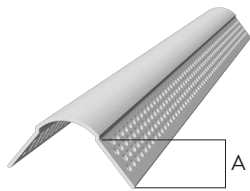
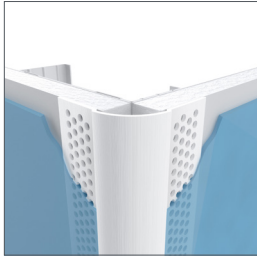


3/8" radius bullnose creates subtle dimension and softens the look of outside corners. 3/8" Bullnose Archway available with slotted flange in 8' and 10' lengths.

Product Code	Radius	(A) Flanges	Length	Pcs/Ctn
BCB38-8	3/8"	7/8"	8'	35
BCB38-9	3/8"	7/8"	9'	35
BCB38-10	3/8"	7/8"	10'	35
BCB38-12	3/8"	7/8"	12'	35

**Note:** To order, add an A to product code, example: BCB38 A-10.

### PRO-Bull 3/4" Corner Bead



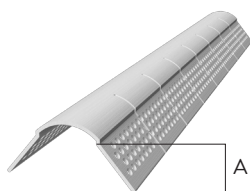
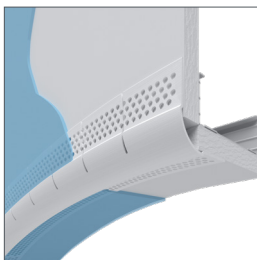
Extra rigid vinyl bullnose corner bead designed for stiffness and strength. 3/4" radius bullnose provides soft, rounded aesthetic to outside corners.

Product Code	Radius	(A) Flanges	Length	Pcs/Ctn
PROBULL-8	3/4"	7/8"	8'	35
PROBULL-9	3/4"	7/8"	9'	35
PROBULL-10	3/4"	7/8"	10'	35
PROBULL-12	3/4"	7/8"	12'	35



How To Install  
PRO-Bull

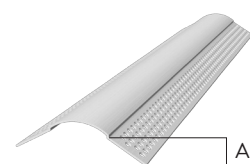
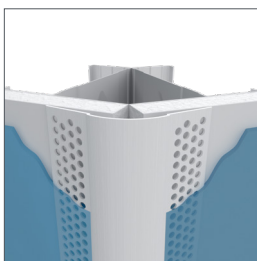
### PRO-Bull 3/4" Archway



3/4" radius bullnose corner bead designed with slotted flange that easily forms to curves and arches with a soft, rounded finish.

Product Code	Radius	(A) Flanges	Length	Pcs/Ctn
PROBULLA-8	3/4"	7/8"	8'	35
PROBULLA-10	3/4"	7/8"	10'	35

### PRO-Bull 3/4" Splayed Corner Bead

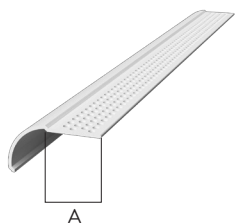
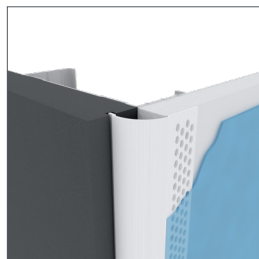


Adjustable bullnose corner bead with a 3/4" radius designed for off-angle outside corner conditions from 120° to 140°.

Product Code	Radius	(A) Flanges	Length	Pcs/Ctn
PROBSB75-8	3/4"	7/8"	8'	35
PROBSB75-9	3/4"	7/8"	9'	35
PROBSB75-10	3/4"	7/8"	10'	35

## Bullnose Corner Beads

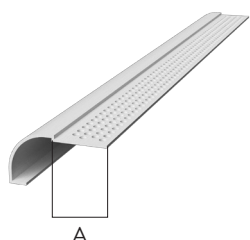
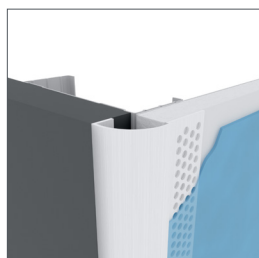
### 3/4" Bullnose Kerfed Corner Bead



3/4" radius bullnose designed with a return leg that can be inserted into the channel of door and window jambs.

Product Code	Radius	(A) Flange	Length	Pcs/Ctn
BKB75-8	3/4"	7/8"	8'	35
BKB75-10	3/4"	7/8"	10'	35

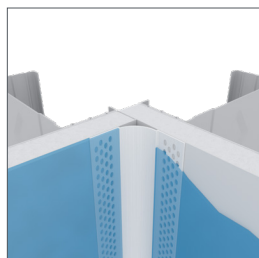
### 3/4" Bullnose J-Bead



Covers the raw edges of drywall with a 3/4" radius bullnose corner. Designed to be installed after the drywall, this bead is ideal for finishing door and window openings.

Product Code	Board Thickness	Radius	(A) Flange	Length	Pcs/Ctn
BJB50S-8	1/2"	3/4"	7/8"	8'	30
BJB50S-10	1/2"	3/4"	7/8"	10'	30
BJB58S-10	5/8"	3/4"	7/8"	10'	30

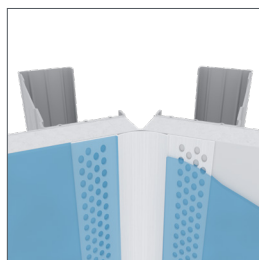
### 3/4" Inside Corner Cove



3/4" radius, inside corner cove that is designed to complement the outside corners created by the PRO-Bull 3/4" Corner Bead.

Product Code	Radius	(A) Flange	Length	Pcs/Ctn
ICC75-8	3/4"	7/8"	8'	35
ICC75-10	3/4"	7/8"	10'	35

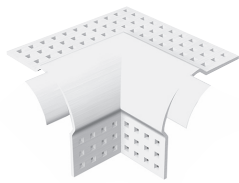
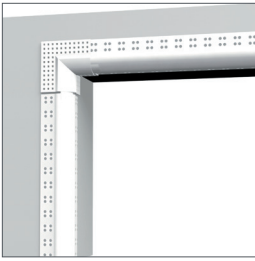
### 3/4" Splayed Inside Corner Cove



3/4" radius, splayed inside corner cove that is designed to complement PRO-Bull 3/4" Splayed Corner Bead. Adjustable from 120° to 140° for off-angle inside corner conditions.

Product Code	Radius	(A) Flange	Length	Pcs/Ctn
ICC75 SP-8	3/4"	7/8"	8'	35
ICC75 SP-10	3/4"	7/8"	10'	35

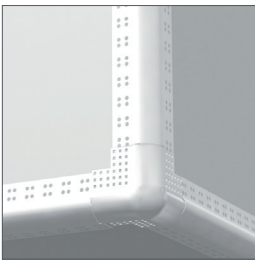
### 3/4" Bullnose 2-Way Inside Corner Cap



Designed to finish intersections where two 3/4" radius bullnose corner beads meet at 90°. Great for windows, doorways, closets and skylights.

Product Code	Radius	Pcs/Ctn
M285	3/4"	50

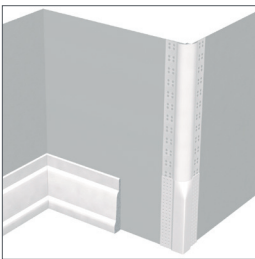
### 3/4" Bullnose 3-Way Outside Corner Cap



Designed to finish intersections where three outside 3/4" radius bullnose corner beads meet at 90° angles and eliminate time consuming mitering.

Product Code	Radius	Pcs/Ctn
M385	3/4"	50

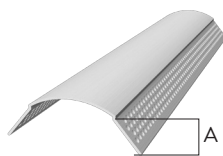
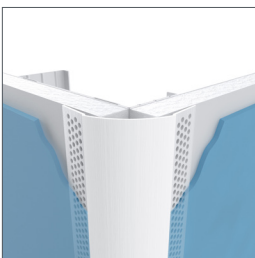
### 3/4" Bullnose Transition Cap



Designed to transition 3/4" radius bullnose corner bead to a 90° square corner for installing baseboard or crown molding up to 4-1/2" wide.

Product Code	Radius	Pcs/Ctn
M859	3/4"	50

### 1-1/2" Bullnose Corner Bead



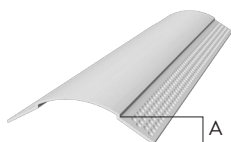
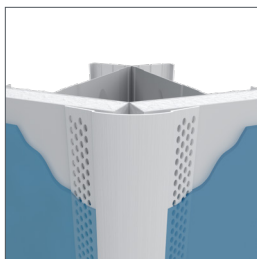
1-1/2" radius bullnose creates large, rounded edges for a soft, curved finish.

Product Code	Radius	(A) Flanges	Length	Pcs/Ctn
BCB150-8	1-1/2"	7/8"	8'	30
BCB150-10	1-1/2"	7/8"	10'	30
BCB150-12	1-1/2"	7/8"	12'	30

**Note:** 1-1/2" Bullnose Archway available with slotted flange in 10' length. To order, add an A to product code, example: BCB150 A-10.

## Bullnose Corner Beads

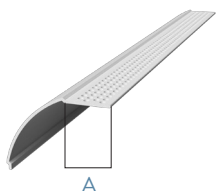
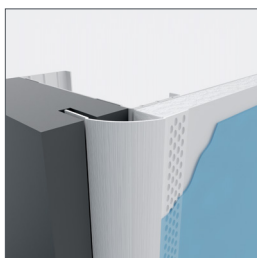
### 1-1/2" Bullnose Splayed Corner Bead



1-1/2" radius bullnose corner bead designed for off-angle outside corner conditions from 120° to 140°.

Product Code	Radius	(A) Flanges	Length	Pcs/Ctn
BSB150-8	1-1/2"	7/8"	8'	30
BSB150-10	1-1/2"	7/8"	10'	30

### 1-1/2" Bullnose Kerfed Corner Bead

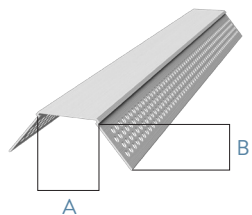
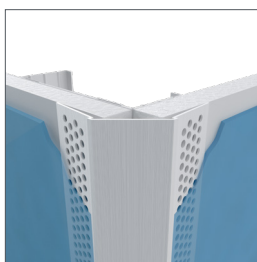


1-1/2" radius bullnose corner bead designed with a return leg designed to be inserted into the channel of window and door jams.

Product Code	Radius	(A) Flange	Length	Pcs/Ctn
BKB150-8	1-1/2"	7/8"	8'	30
BKB150-10	1-1/2"	7/8"	10'	30

## Chamfered Corner Bead

### Chamfered Corner Bead



Designed with a 3/4" chamfered edge at the corner to provide a modern look and shadowing effect.

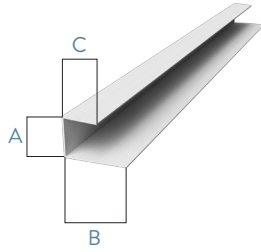
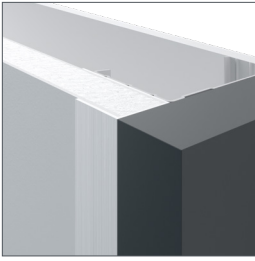
Product Code	(A) Chamfered Edge	(B) Flanges	Length	Pcs/Ctn
CH125-8	3/4"	1"	8'	30
CH125-9	3/4"	1"	9'	30
CH125-10	3/4"	1"	10'	30

**Note:** Chamfered Archway available with slotted flange in 10' lengths. To order, add an A to product code, example: CH125 A-10.



## Commercial Beads

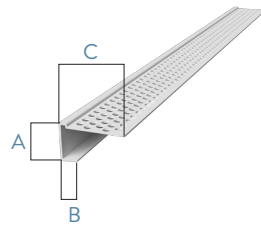
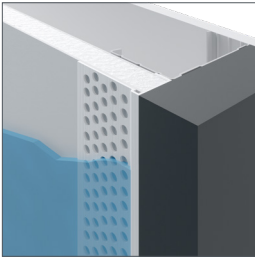
## J-Bead



Designed to cover the raw edges of drywall under all window and door casings.

Product Code	(A) Board Thickness	(B) Back Leg	(C) Return Leg	Length	Pcs/Ctn
JB19-10	3/16"	1"	1/2"	10'-0"	50
JB25-10	1/4"	1"	1/2"	10'-0"	50
JB38-10	3/8"	1"	1/2"	10'-0"	50
JB50-8	1/2"	1"	1/2"	8'-0"	50
JB50-10	1/2"	1"	1/2"	10'-0"	50
JB58-8	5/8"	1"	1/2"	8'-0"	50
JB58-10	5/8"	1"	1/2"	10'-0"	50
JB58-12	5/8"	1"	1/2"	12'-0"	50
JB75-10	3/4"	1"	1/2"	10'-0"	50
JB100-10	1"	1"	1/2"	10'-0"	50

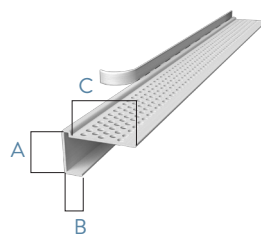
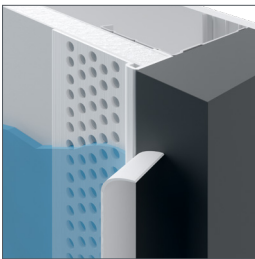
## Muddable J-Bead



Designed to cover the raw edges of drywall when butting up to other materials such as masonry, glass, door frames, and window frames.

Product Code	(A) Board Thickness	(B) Return Leg	(C) Flange	Length	Pcs/Ctn
MJB50-8	1/2"	1/4"	1-1/8"	8'-0"	50
MJB50-10	1/2"	1/4"	1-1/8"	10'-0"	50
MJB58-8	5/8"	1/4"	1-1/8"	8'-0"	50
MJB58-10	5/8"	1/4"	1-1/8"	10'-0"	50

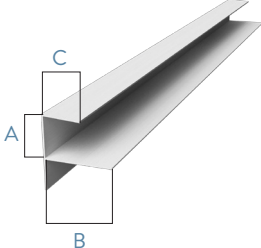
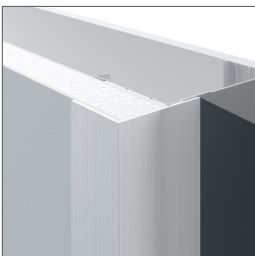
## Rip-Bead® Muddable J-Bead



Designed to cover the raw edges of drywall when butting up to other materials such as masonry, glass, door frames, and window frames. Features a 5/16" removable leg that acts as a guide for the taping knife and a protective mask for joint compound application.

Product Code	(A) Board Thickness	(B) Return Leg	(C) Flange	Length	Pcs/Ctn
TMJB50-8	1/2"	1/4"	1-1/8"	8'-0"	50
TMJB50-10	1/2"	1/4"	1-1/8"	10'-0"	50
TMJB58-8	5/8"	1/4"	1-1/8"	8'-0"	50
TMJB58-10	5/8"	1/4"	1-1/8"	10'-0"	50

## F-Bead

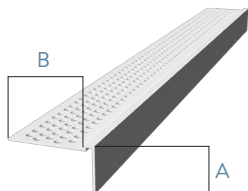
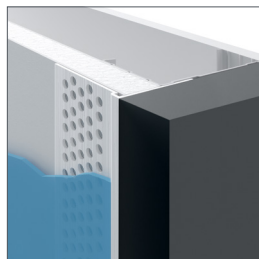


Designed to cover the raw edges of drywall and provide a 1/2" horizontal extension.

Product Code	(A) Board Thickness	(B) Back Leg	(C) Return Leg	Length	Pcs/Ctn
FB50-10	1/2"	1"	1/2"	10'-0"	50
FB58-10	5/8"	1"	1/2"	10'-0"	50

## Commercial Beads

## L-Bead

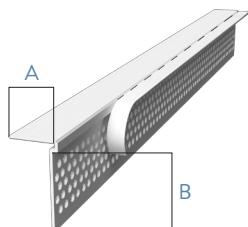
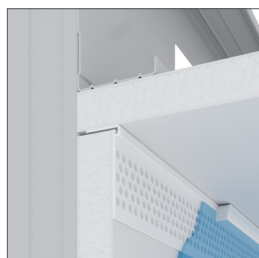


Designed to cover the raw edges of drywall at ceilings, windows and other finished interior components.

Product Code	(A) Board Thickness	(B) Flange	Length	Pcs/Ctn
LB38-10	3/8"	1"	10'	50
LB50-8	1/2"	1"	8'	50
LB50-10	1/2"	1"	10'	50
LB58-8	5/8"	1"	8'	50
LB58-10	5/8"	1"	10'	50
LB75-10	3/4"	1"	10'	50
LB100-10	1"	1"	10'	50
LB125-10	1-1/4"	1"	10'	50
LB150-10	1-1/2"	1"	10'	50
LB200-10	2"	1"	10'	50
LB250-10	2-1/2"	1"	10'	50
LB300-10	3"	1"	10'	50

**Note:** L-Bead Archway available for 1/2" and 5/8" board thickness in 10' lengths. To order, add an A to product code, example: LB50 A-10.

## Rip-Bead® L-Bead

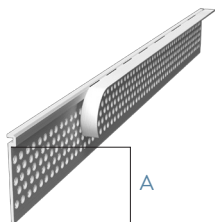


Designed to cover the raw edges of drywall at ceilings, windows and other finished interior components. Features a 5/16" removable leg that acts as a guide for the taping knife and a protective mask for the application of joint compound.

Product Code	(A) Board Thickness	(B) Flange	Length	Pcs/Ctn
CT50-8	1/2"	1"	8'	50
CT50-10	1/2"	1"	10'	50
CT50-12	1/2"	1"	12'	50
CT58-8	5/8"	1"	8'	50
CT58-10	5/8"	1"	10'	50
CT58-12	5/8"	1"	12'	50

**Note:** Rip-Bead L-Bead Archway available for 1/2" and 5/8" board thickness in 10' lengths. To order, add an A to product code, example: CT50 A-10.

## Rip-Bead® Flat L-Bead

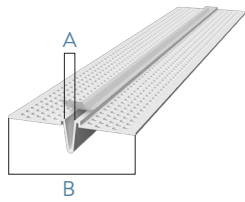
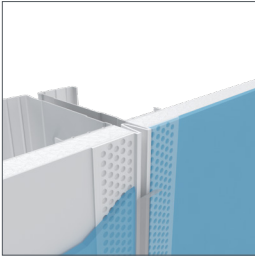


Designed for areas where the drywall is butted too close to slip the return leg over the raw edge of the drywall at ceilings, windows and other finished interior components. Features a 5/16" removable leg that acts as a protective mask for joint compound application and as a guide for the taping knife.

Product Code	Board Thickness	(A) Flange	Length	Pcs/Ctn
CT0-8	ALL	1-1/8"	8'	50
CT0-10	ALL	1-1/8"	10'	50

## Control and Expansion Joints

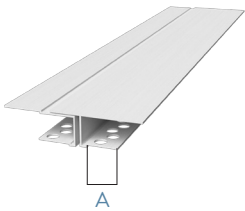
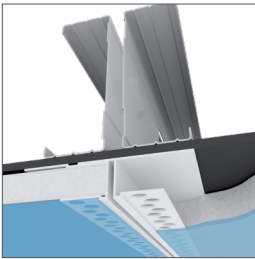
### 093 Control Joint



Provides stress relief and assists in the controlling of cracking across large areas of wallboard. Tear-off tape protects the center "V" from joint compound. Requires proper backing in fire-rated walls. Factory fabricated intersections are available upon request.

Product Code	Board Thickness	(A) Reveal Width	(B) Overall Width	Length	Pcs/Ctn
093V-10	1/2" or 5/8"	3/16"	2-1/4"	10'-0"	20

### "DX" Expansion Joint



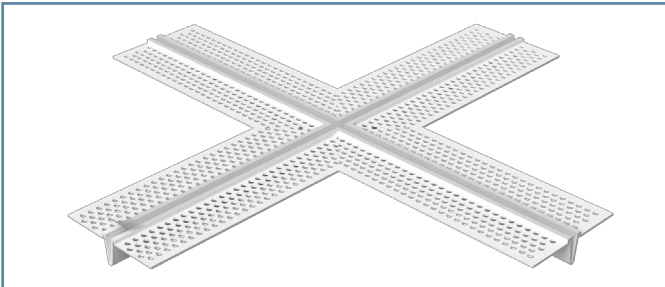
Provides stress relief and assists in the controlling of cracking across large areas of wallboard. Adjustable from 1/4" to 1/2" and designed to be installed with the drywall.

Product Code	Board Thickness	(A) Flanges	Length	Pcs/Ctn
DX50	1/2"	3/4"	10'-0"	25
DX58	5/8"	3/4"	10'-0"	25

## Factory Fabricated Control Joint Intersections

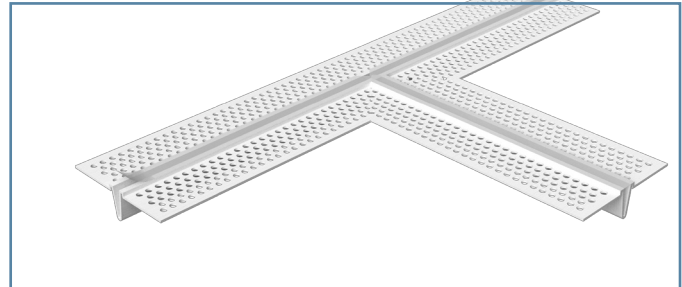
All ClarkDietrich vinyl control joint intersections are manufactured in a controlled factory environment to the highest quality standards. Miter cuts are made with precision to ensure a proper fit at all connections. Hot-melt glue and foil-backed tape are used to create a strong bond for all components. The quality of ClarkDietrich factory fabricated control joint intersections cannot be duplicated on a job site. When quality counts, trust ClarkDietrich. Please call customer service at 1-800-648-4695 to request a quote.

#### C - Cross



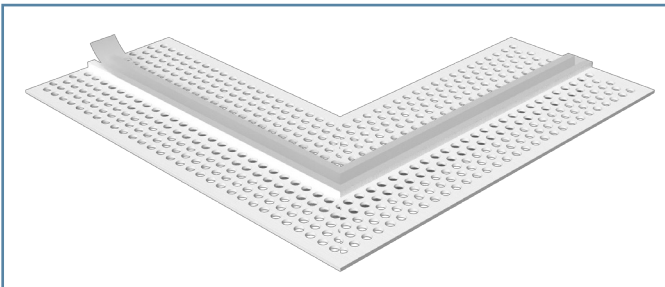
Add "C" to product code, example CJV16-C

#### T - Tee



Add "T" to product code, example CJV16-T

#### A - Angle

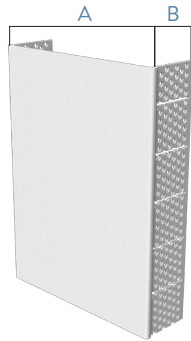


Add "A" to product code, example CJV16-A

**It is recommended that additional 10 ft. control joint material is ordered along with all intersections to ensure seamless connections.** Caulk all intersections, butt joints, ends, and corners at time of installation. All factory fabricated control joint intersections are made-to-order.

## Partition End Caps

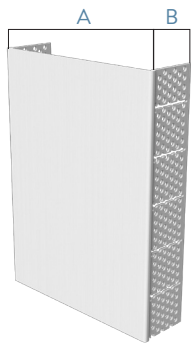
### 3-5/8" Partition End Cap



Finish doorways, wall ends, knee walls and closets by eliminating the need for a drywall rip and two corner beads. The 4-5/8" size is designed for 3-5/8" metal studs and 2 pieces of 1/2" drywall. The 4-7/8" is designed for 3-5/8" metal studs and 2 pieces of 5/8" drywall. Designed with a "T" slotted flange to create straight-to-curve arches by simply cutting the ends of "T" slots where curve or arch is desired.

Product Code	Board Thickness	(A) Overall Width	(B) "T" Slotted Flanges	Length	Pcs/Ctn
PEC50-358-10	1/2"	4-5/8"	1-1/8"	10'	10
PEC58-358-10	5/8"	4-7/8"	1-1/8"	10'	10

### 2-1/2" Partition End Cap

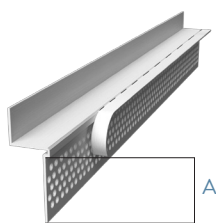
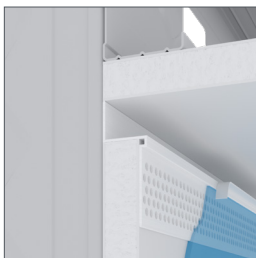


Finish doorways, wall ends, knee walls and closets by eliminating the need for a drywall rip and two corner beads. The 3-1/2" size is designed for 2-1/2" metal studs and 2 pieces of 1/2" drywall. The 3-3/4" size is designed for 2-1/2" metal studs and 2 pieces of 5/8" drywall. Designed with a "T" slotted flange to create straight-to-curve arches the ends of the "T" slots where curve or arch is desired.

Product Code	Board Thickness	(A) Overall Width	(B) "T" Slotted Flanges	Length	Pcs/Ctn
PEC50-250-10	1/2"	3-1/2"	1-1/8"	10'	10
PEC58-250-10	5/8"	3-3/4"	1-1/8"	10'	10

## Shadow Reveals

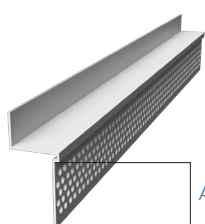
### Rip-Bead® Shadow Reveal



Creates an edge reveal when butting up to ceilings, base trim and other finished interior components. Features a 5/16" removable leg which acts as a guide for taping knife and a protective mask for joint compound application.

Product Code	Board Thickness	Reveal	(A) Flange	Length	Pcs/Ctn
CTR50-19-10	1/2"	3/16"	1-1/8"	10'	50
CTR50-38-10	1/2"	3/8"	1-1/8"	10'	50
CTR50-50-10	1/2"	1/2"	1-1/8"	10'	50
CTR50-58-10	1/2"	5/8"	1-1/8"	10'	50
CTR50-75-10	1/2"	3/4"	1-1/8"	10'	50
CTR50-100-10	1/2"	1"	1-1/8"	10'	50

### Shadow Reveal

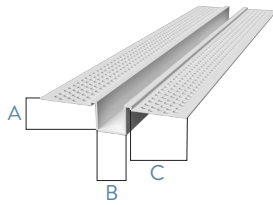
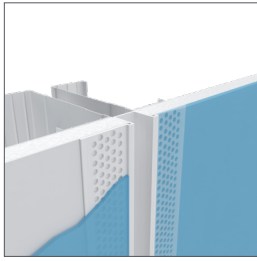


Creates an edge reveal when butting up to ceilings, base trim and other finished interior components.

Product Code	Board Thickness	Reveal	(A) Flange	Length	Pcs/Ctn
CTR58-50-10	5/8"	1/2"	1-1/8"	10'	50
CTR58-75-10	5/8"	3/4"	1-1/8"	10'	50

## Channel Reveals

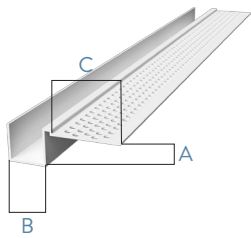
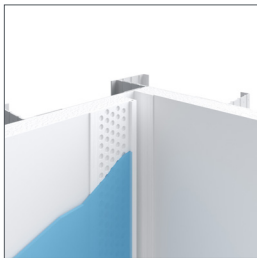
### Channel Reveal



Create 1/4" to 2" reveals in drywall surfaces with no backing or blocking needed. Factory fabricated intersections are also available upon request.

Product Code	(A) Board Thickness	(B) Reveal	(C) Flanges	Length	Pcs/Ctn
DC50-25S	1/2"	1/4"	1-1/8"	10'-0"	20
DC50-38S	1/2"	3/8"	1-1/8"	10'-0"	20
DC50-50S	1/2"	1/2"	1-1/8"	10'-0"	20
DC50-75S	1/2"	3/4"	1-1/8"	10'-0"	15
DC50-100S	1/2"	1"	1-1/8"	10'-0"	15
DC50-150S	1/2"	1-1/2"	1-1/8"	10'-0"	15
DC50-200S	1/2"	2"	1-1/8"	10'-0"	10
DC58-25S	5/8"	1/4"	1-1/8"	10'-0"	20
DC58-38S	5/8"	3/8"	1-1/8"	10'-0"	20
DC58-50S	5/8"	1/2"	1-1/8"	10'-0"	15
DC58-75S	5/8"	3/4"	1-1/8"	10'-0"	15
DC58-100S	5/8"	1"	1-1/8"	10'-0"	12
DC58-150S	5/8"	1-1/2"	1-1/8"	10'-0"	10
DC58-200S	5/8"	2"	1-1/8"	10'-0"	10

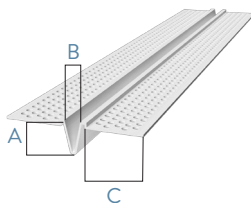
### "F" Channel Reveal



Create 1/4" to 1" reveals in drywall surfaces. Designed to be used at the juncture of door jambs, windows and other unfinished surfaces. Factory fabricated intersections are available upon request.

Product Code	(A) Board Thickness	(B) Reveal	(C) Flange	Length	Pcs/Ctn
FDC50-25S	1/2"	1/4"	1-1/8"	10'-0"	25
FDC50-38S	1/2"	3/8"	1-1/8"	10'-0"	25
FDC50-50S	1/2"	1/2"	1-1/8"	10'-0"	25
FDC50-75S	1/2"	3/4"	1-1/8"	10'-0"	20
FDC50-100S	1/2"	1"	1-1/8"	10'-0"	15
FDC58-25S	5/8"	1/4"	1-1/8"	10'-0"	20
FDC58-38S	5/8"	3/8"	1-1/8"	10'-0"	20
FDC58-50S	5/8"	1/2"	1-1/8"	10'-0"	15
FDC58-75S	5/8"	3/4"	1-1/8"	10'-0"	15
FDC58-100S	5/8"	1"	1-1/8"	10'-0"	10

### "V" Channel Reveal



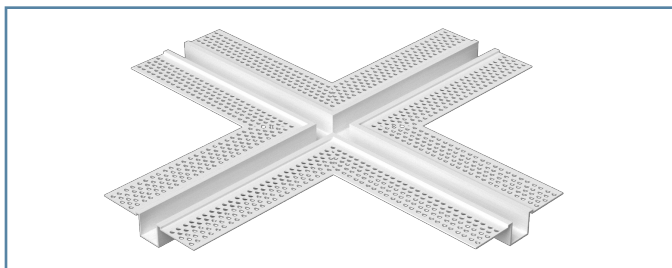
Designed with a dramatic, deep "V" reveal to create a modern look and shadowing effect. Factory fabricated intersections are also available upon request.

Product Code	(A) Board Thickness	(B) Reveal	(C) Flanges	Length	Pcs/Ctn
DCI50-25	1/2" or 5/8"	1/4"	1-1/8"	10'	30
DCI50-50	1/2" or 5/8"	1/2"	1-1/8"	10'	30
DCI50-75	1/2" or 5/8"	3/4"	1-1/8"	10'	25
DCI50-100	1/2" or 5/8"	1"	1-1/8"	10'	25

## Factory Fabricated Channel Reveal Intersections

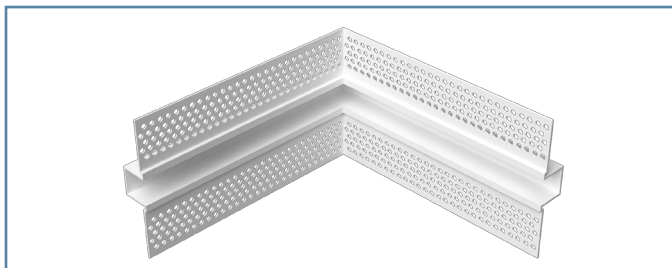
Factory fabricated channel reveal intersections create clear channel designs for drywall surfaces. All ClarkDietrich vinyl channel reveal intersections are manufactured in a controlled factory environment to the highest quality standards. Miter cuts are made with precision to ensure proper fit at all connections. Hot-melt glue and foil-backed tape are used to create a strong bond for all components. The quality of ClarkDietrich fabricated channel reveal intersections cannot be duplicated on a job site. When quality counts, trust ClarkDietrich. Please call customer service at 1-800-648-4695 to request a quote.

C = Cross



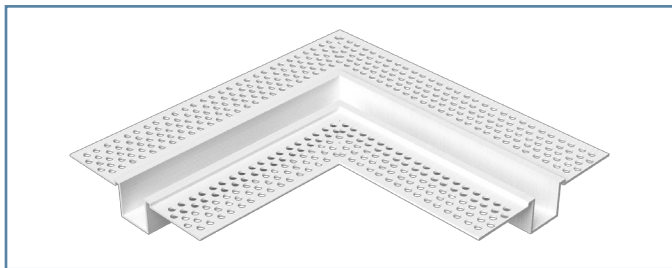
Add "C" to product code, example DC50-50S-C

IC - Inside Corner



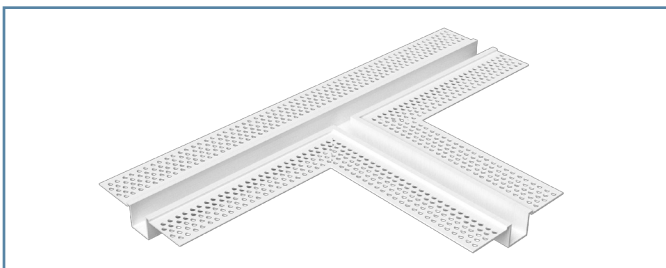
Add "IC" to product code, example DC50-50S-IC

A - Angle



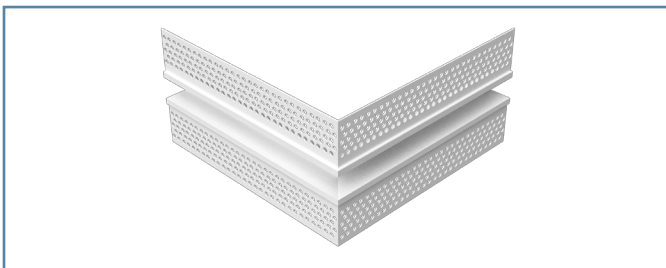
Add "A" to product code, example DC50-50S-A

T - Tee



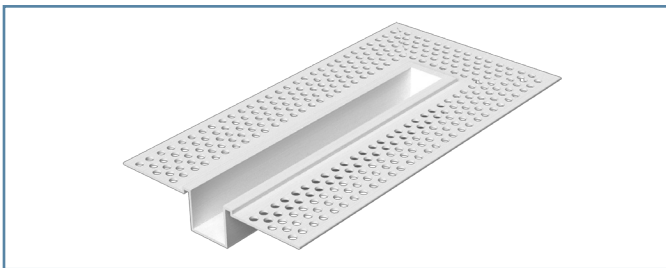
Add "T" to product code, example DC50-50S-T

OC - Outside Corner



Add "OC" to product code, example DC50-50S-OC

EC - End Closure



Add "EC" to product code, example DC50-50S-EC

**It is recommended that additional 10 ft. channel reveal material is ordered along with all intersections to ensure seamless connections.** Caulk all intersections, butt joints, ends and corners at time of installation.



## Strait-Flex® Drywall Finishing Products

ClarkDietrich's focus has been to identify construction problems and manufacture products which increase production rates, save labor and improve quality. This has led to product innovations such as X-Crack which eliminates ceiling cracks, stick corner beads that require no fasteners, durable patches that quickly correct miscut and damaged drywall, and Mud-Pro compound applicators that require no daily clean up.

When it comes to meeting wall and ceiling challenges and delivering peace of mind, ClarkDietrich leads by example. Whether framing a building or bringing that final fit and finish to your interior walls, ClarkDietrich knows that details matter. That's why we do a lot of the little things differently – like printing measurements and cut lines directly onto our beads and trims – because it gives you an advantage on the jobsite.

### THE RIGHT PRODUCT FOR THE RIGHT APPLICATION

			Product Total Width	Gaps Filled in Drywall	Outside 90° Corners	Inside 90° Corners	Off-Angle Corners	Vaults	Seams	Butt-Joints	Cracks	Wet Areas	Curves, 90° Corners	Free-Form Curves	Veneer Plaster	Double 5/8" 90° Corners	Repairs Metal Corner Bead	High Traffic Areas	Mold-Resistant	Full Composite	Paper-Faced Composite	Paper-Faced Cellulose Lamine
rolled products																						
<b>Tuff-Tape</b>	Use where paper tapes has failed	2"	Small	✓				✓											✓			
<b>Crack-Tape</b>	Persistent cracks	2"	Reg	✓				✓		✓			✓						✓			
<b>Edge-Tape</b>	Finishes edges of drywall	2"	Reg																	✓		
<b>Perfect-90°</b>	Faster and stronger than paper tape	2 1/16"	Small	✓	✓																✓	
<b>Ammo-Flex</b>	Bazooka® applications	2 1/16"	Small	✓	✓																✓	
<b>Butt-Tape</b>	Fast, flat butt-joints	2 1/16"	Small					✓	✓												✓	
<b>Medium</b>	Inside corners and off-angle corners	2 1/4"	Small	✓	✓														✓			
<b>Tile-Tape</b>	Wet areas, Mold-proof	2 1/4"	Reg	✓	✓	✓		✓			✓							✓	✓			
<b>Uno-Bead 222</b>	Drywall, plaster	2 1/4"	Reg	✓	✓	✓							✓		✓	✓			✓			
<b>L-Bead</b>	Finishes edges of drywall	2 1/4"	Reg																✓			
<b>Original</b>	Most versatile, multi-purpose	2 3/8"	Reg	✓	✓	✓													✓			
<b>Gold</b>	Inside & outside 90° and off-angle corners	2 1/2"	Reg	✓	✓	✓	✓													✓		
<b>Pro-Flex<sup>300</sup></b>	Inside 90° and off-angle corners	3"	Reg	✓	✓	✓	✓														✓	
<b>Mid-Flex</b>	Inside & outside 90° and off-angle corners	3"	Reg	✓	✓	✓	✓													✓		
<b>Wet-Flex</b>	Outside corners, vaults, water activated	3"	Large	✓		✓													✓			
<b>Arch-Flex</b>	Compound arches, double curves applications	3 3/8"	Reg								✓	✓							✓			
<b>Wide-Flex</b>	Inside & outside 90° and off-angle corners	4"	Large	✓	✓	✓	✓							✓						✓		

			Product Total Width	Gaps Filled in Drywall	Outside 90° Corners	Inside 90° Corners	Off-Angle Corners	Vaults	Seams	Butt-Joints	Cracks	Wet Areas	Curves, 90° Corners	Free-Form Curves	Veneer Plaster	Double 5/8" 90° Corners	Repairs Metal Corner Bead	High Traffic Areas	Mold-Resistant	Full Composite	Paper-Faced Composite	Paper-Faced Cellulose Lamine
stick products																						
<b>IS-300</b>	Inside 90°, straightens large irregularities	3"	Large	✓																✓		
<b>Big-Stick</b>	Outside 90°, straightens common irregularities	3"	Reg	✓												✓			✓			
<b>Wet-Stick</b>	Outside 90°, water-activated	3"	Reg	✓												✓			✓			
<b>OS-300</b>	Outside 90°, straightens common irregularities	3"	Reg	✓																✓		
<b>Arch-Stick</b>	Outside 90° arched corners	3 3/8"	Reg	✓							✓	✓							✓			
<b>OS-400</b>	Outside 90°, straightens large irregularities	4"	Large	✓											✓					✓		

## Strait-Flex Flexible Corner Beads - Paper-Faced

- High-performance drywall corner bead.
- Memory-free hinge produces straight corners and perfect angles.
- Installs with all-purpose joint compound.
- Composite structural backing provides strength and a superior bond to the drywall surface.
- Diamond-punched paper edging provides maximum adhesion - no cracks, no call backs.
- Finishing compound is not required over the laminated area - uses half the compound vs. standard corner bead.
- Paper will not fuzz-up during sanding.
- Resists dents and common cracking problems.

### Pro-Flex<sup>300</sup>



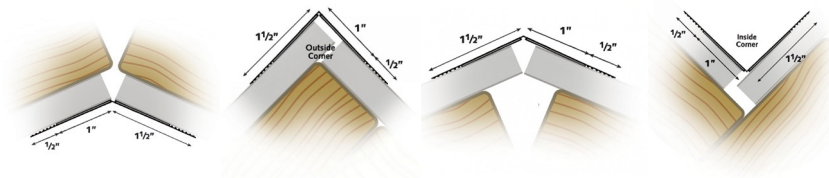
How To Install  
Pro-Flex<sup>300</sup>

Pro-Flex<sup>300</sup> is a muddable, PVC-Free, flexible corner bead that adjusts to any angle to create perfect inside and outside 90° and off-angle corners. Pro-Flex<sup>300</sup> features a reinforced paper backing which provides strength for durability and impact resistance. The heavy-weight, diamond punched paper provides maximum adhesion for an even lay-down of the paper edge and reduced edge cracking.

Product Code	Width	Length	Rolls/Case	Cases/Pallet
PF300-100	3" (76mm)	100' (30.5m)	10	24

Item UPC: 7-51361-52022-4

Case UPC: 7-51361-52023-1



### Mid-Flex



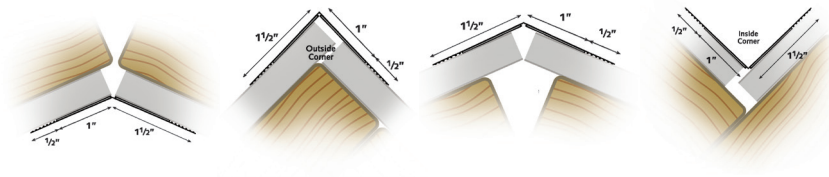
How To Install  
Mid-Flex

Finishes outside corners where common gaps in drywall are present. Outside corners where a large fill or straightening is required, no back filling needed. Great for vaulted, coffered and tray ceilings, and bay windows.

Product Code	Width	Length	Rolls/Case	Cases/Pallet
MF-100	3" (76mm)	100' (30.5m)	10	24

Item UPC: 7-51361-50318-0

Case UPC: 7-51361-50319-7



## Wide-Flex



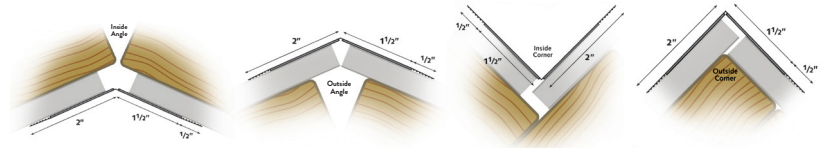
How To Install  
Wide-Flex

Finishes outside corners where common gaps in drywall are present. Hard-to-straighten outside corners and outside corners for double 5/8" drywall. Great for vaulted, coffered, tray and cathedral ceilings.

Product Code	Width	Length	Rolls/Case	Cases/Pallet
WF-100	4" (102mm)	100' (30.5m)	7	24

Item UPC: 7-51361-50320-3

Case UPC: 7-51361-50321-0



## Gold



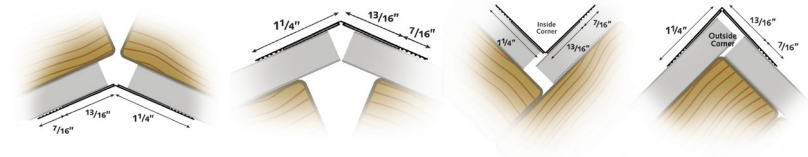
How To Install  
Gold

Finishes inside & outside corners where common gaps in drywall are present. Inside 90° corners where a large fill or straightening is required, no back filling needed. Great for vaulted, coffered and tray ceilings, and bay windows.

Product Code	Width	Length	Rolls/Case	Cases/Pallet
GOLD-100	2-1/2" (63mm)	100' (30.5m)	10	24

Item UPC: 7-51361-50316-6

Case UPC: 7-51361-50317-3



## Strait-Flex Flexible Corner Beads - Composite

### Original



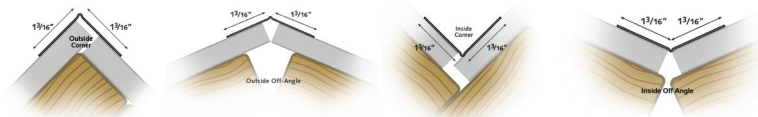
How To Install  
Original

Finishes inside and outside 90° corners and off-angle corners. Replaces standard corner bead and uses half the compounds. Spans common gaps in drywall; no back-filling required. Great for coffered and tray ceilings, bay windows.

Product Code	Width	Length	Rolls/Case	Cases/Pallet
SO-100	2-3/8" (60mm)	100' (30.5m)	12	24

Item UPC: 7-51361-50338-8

Case UPC: 7-51361-50339-5



### Medium



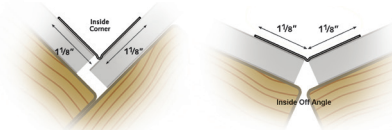
How To Install  
Medium

Inside corners where small gaps in drywall are present. Inside 90° corners where a small fill or minor straightening is required, no back filling needed. Great for vertical and wall-to-ceiling inside corners and inside angles of bay windows.

Product Code	Width	Length	Rolls/Case	Cases/Pallet
SM-100	2-1/4" (57mm)	100' (30.5m)	12	24

Item UPC: 7-51361-50336-4

Case UPC: 7-51361-50337-1



### Arch-Flex



Designed for compound arches and double curve applications. Curved walls, ceilings, soffits, staircases, barrel vaults, and cathedral ceilings and arched windows and doors. Produces smooth, professional looking curves. Tear strips allow for easy straight-to-curve transitions. Taping around circular air ducts. Resists dents, paint chipping, shrinkage and common cracking problems. Installs using standard compounds, no special tools or fasteners needed.

Product Code	Width	Length	Rolls/Case	Cases/Pallet
AF-50	3-3/8" (86mm)	50' (15.25m)	12	16
AF-100	3-3/8" (86mm)	100' (30.5m)	12	20

AF-50

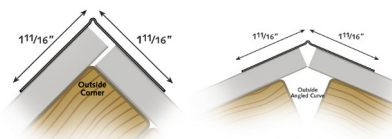
Item UPC: 7-51361-50340-1

Case UPC: 7-51361-50341-8

AF-100

Item UPC: 7-51361-50342-5

Case UPC: 7-51361-50343-2



## Uno-Bead<sup>222</sup>

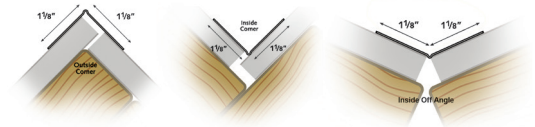


Designed for replacing or repairing metal corner bead. Creates perfect inside and outside corners. Ideal for drywall, thin-coat plaster applications. High traffic areas where bumps and dents commonly occur. Eliminates edge cracking.

Product Code	Width	Length	Rolls/Case	Cases/Pallet
UB222-100	2-1/4" (57mm)	100' (30.5m)	12	24

Item UPC: 7-51361-50348-7

Case UPC: 7-51361-50349-4



## Wet-Flex

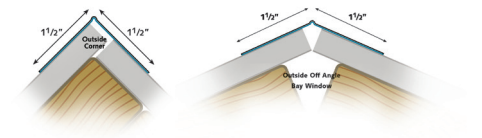


Designed as a water-activated outside 90° and outside off-angle corner bead on a roll. Impact-resistant nose, water-activated adhesive on inside of roll. Small bead creates a perfect, clean edge. Small fill coat; fast drying. No paper-face to fuzz-up, burn-through, delaminate, or curl. No edge cracking.

Product Code	Width	Length	Rolls/Case	Cases/Pallet
WETF-100	3" (76mm)	100' (30.5m)	8	24

Item UPC: 7-51361-50350-0

Case UPC: 7-51361-50351-7





## Strait-Flex Premium Trims and Tapes

### Perfect 90°™

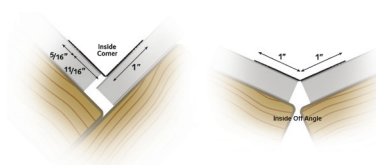


Finishes inside 90° and off-angle corners. Twice as fast and twice as strong compared to conventional paper or mesh tapes. Memory-free hinge produces straight inside corners and perfect angles. Paper will not fuzz up during sanding like paper and mesh tapes. Reinforced paper backing provides strength and rigidity. Spans small gaps in drywall, no back filling needed. Finishing compound is not required over laminated surface. Pre-treated to accept primer or paint.

Product Code	Width	Length	Rolls/Case Pack	Cases/Pallet
P90-100	2-1/16" (52mm)	100' (30.5m)	12	24

Item UPC: 7-51361-50322-7

Case UPC: 7-51361-50323-4



### Ammo-Flex



Designed for Bazooka® applications. Cuts easily. Inside corners of bay windows. Straightens small framing irregularities. Prefinished surface. Just skim coat edges to finish. Inside 90° corners where small fill or straightening is required. Utilizes reinforced paper backing, not paper-faced composite.

Product Code	Width	Length	Rolls/Case Pack	Cases/Pallet
AMF-100	2-1/16" (52mm)	100' (30.5m)	12	24
AMF-200	2-1/16" (52mm)	200' (61m)	12	24

AMF-100

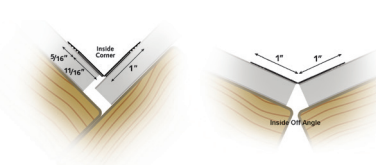
Item UPC: 7-51361-50324-1

Case UPC: 7-51361-50325-8

AMF-200

Item UPC: 7-51361-50326-5

Case UPC: 7-51361-50327-2



### Edge-Tape



Designed to replace tear-off bead. Finishes drywall edges to suspended ceilings, window returns, sky lights, fiberglass tubs. Commercial "Top Out" applications where drywall meets concrete ceiling/deck. Twice as fast and uses half the compound vs tear-off beads. 100 foot roll reduces waste by up to 20%; easily transported. Installs using standard compound. No spray adhesive or fasteners required.

Product Code	Width	Length	Rolls/Case Pack	Cases/Pallet
ET-100	2" (52mm)	100' (30.5m)	12	24

Item UPC: 7-51361-50328-9

Case UPC: 7-51361-50329-6





## L-Bead



How To Install  
L-Bead

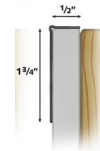
Designed to finish edges of drywall. L-Bead on a roll, that performs like conventional L-Bead. Window returns, sky lights, and wall edges. Produced for drywall thickness of 1/2" and 5/8". Made of full composite material.

Product Code	Width	Length	Rolls/Case Pack	Cases/Pallet
LB12-100 (1/2")	2-1/4" (57mm)	100' (30.5m)	12	24

### LB12-100

Item UPC: 7-51361-50332-6

Case UPC: 7-51361-50333-3



## Tuff-Tape

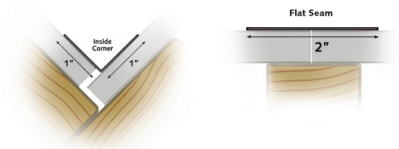


Designed for strength and speed and as a paper tape replacement. Inside corners and flat seams. Use in areas where humidity causes paper tape to fail and when strength and speed are required. Two times stronger than paper tape. Resists blisters, tears, and common cracking problems.

Product Code	Width	Length	Rolls/Case Pack	Cases/Pallet
TT-100	2" (51mm)	100' (30.5m)	12	24

Item UPC: 7-51361-50352-4

Case UPC: 7-51361-50353-1



## Crack-Tape



Designed for repairing persistent cracks. Repairs difficult stress cracks in corners and flat surfaces. Drywall and plaster cracks, and truss uplift repairs. Thin coat plaster applications. Two times stronger than paper tape.

Product Code	Width	Length	Rolls/Case Pack	Cases/Pallet
CT-50	2" (51mm)	50' (15.25m)	12	24
CT-100	2" (51mm)	100' (30.5m)	12	24

### CT-50

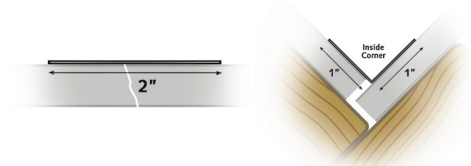
Item UPC: 7-51361-51462-9

Case UPC: 7-51361-51463-6

### CT-100

Item UPC: 7-51361-50356-2

Case UPC: 7-51361-50357-9



Strait-Flex Premium Trims and Tapes

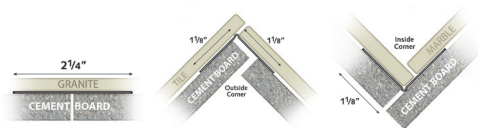
Tile-Tape



Produces straight, strong, and water-proof inside, outside and off-angle corners. Designed for taping the water-resistant backing board for tile and marble applications. Prevents leaks caused by common grout cracks. Twice as strong as paper or mesh tapes. Watertight seams and is mold and alkali resistant. Will not cut or snag with notched trowel when applying tile setting compound. Apply over fiber cement board, green board, mold-resistant board, or water-resistant board in wet areas (tubs, showers, tile counter tops, tub deck, and steps).

Product Code	Width	Length	Rolls/Case Pack	Cases/Pallet
T-100	2-1/4" (57mm)	100' (30.5m)	12	24

Item UPC: 7-51361-50322-7  
Case UPC: 7-51361-50323-4



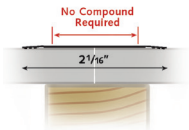
Butt-Tape



Designed for fast, flat, vertical and horizontal butt-joints. Commercial "Top-Out" applications, cracked butt joints and stress cracks. Twice as fast as conventional tapes with 50% less compound, 50% less sanding, and 50% faster drying time. No pre-filling required. No delayed shrinkage, beading or paint blisters. No compound required over laminated area of tape. Leaves butt-joints virtually unnoticeable. Two times stronger than paper or mesh tape.

Product Code	Width	Length	Rolls/Case Pack	Cases/Pallet
BT-100	2-1/16" (52mm)	100' (30.5m)	12	24

BT-100  
Item UPC: 7-51361-50362-3  
Case UPC: 7-51361-50363-0



## Strait-Flex® X-Crack

### NO CRACKS

X-Crack® eliminates all cracks in vaulted ceilings, butterfly vaults, and inside 90-degree corners in flat ceiling areas caused by truss uplifts. This patented product holds drywall joints stationary while allowing structural movement of framing members.

### STRAIGHTENS

X-Crack's rigid design, hinged backbone, and flexible tab design will straighten all uneven framing members. This pre-straightening of sub-structure will eliminate the need of all pre-filling due to irregularities of framing members. It makes easy work of intricate ceiling applications that have no backing.

### FAST

X-Crack is adjustable to any inside or outside angle and installs in minutes. X-Crack will reduce finishing time by the elimination of pre-filling and pre-straightening. Your drywall finisher will start with a perfectly even and straight joint.

### PERMANENT

Follow the installation instructions and you will solve the age-old problem of ceiling cracks and uneven framing!

### DESCRIPTION

X-Crack is a patented, floating alignment joint member manufactured from 24 mil G90 galvanized steel and is available at your local drywall distributor in ten feet length rolls. Each X-Crack carton contains ten 10' rolls (100 lineal ft).

## X-Crack



Say goodbye to cracks forever! X-Crack ceiling framing alignment system allows structural movement independent from the drywall inside corner joint. Straightens uneven roof framing members during installation. Flexible tabs and pre-drilled for easy installation. PVC Hinge. Adjusts to all inside and outside angles. For inside corners, the surface of the PVC hinge faces the framing members. For outside corners, the surface of the PVC hinge faces out.

Product Code	Size	Case Pack	Case Weight	Cases/Pallet
X-R	4-1/4" (10.8cm) x 10' (305cm)	10pc. 10' long, 100lf	21 lbs	24 or 48

Case UPC: 7-51361-50367-8

U.S. Patent No. 9,222,266



How To Install  
X-Crack

### Simply The Best Insurance Against Cracks On The Market!

Adjust X-Crack to desired angle and use drywall screws to fasten it to ceiling framing members. Install drywall over X-Crack using fine or coarse threaded screws – be sure screws only penetrate drywall and X-Crack but miss trusses or ceiling joists by 2 to 4 inches. You must install the last screws in the field 10 to 12 inches away from X-Crack to allow for lumber movement. By missing the framing members and fastening drywall boards only to X-Crack; finished inside corners will not move or crack. Use Pro-Flex<sup>300</sup> or Mid-Flex flexible corner trim to complete installation.

**NO SCREW SHOULD PENETRATE ALL THREE MATERIALS**  
(drywall - X-Crack - framing members)

**Please call ClarkDietrich with any product questions or concerns at (636) 300-1411.**

## Strait-Flex® X-Crack

### ADVANTAGES

Eliminates inside and outside cracks in ceiling corner joints.

Eliminates costly repairs due to ceiling cracks and the inconvenience to dissatisfied home owners.

Eliminates pre-filling or pre-straightening by finisher when ceiling members are not in alignment.

Quick installation time - 50ft. of X-Crack takes about 10 minutes to install.

Perfectly straight inside and outside ceiling corners.

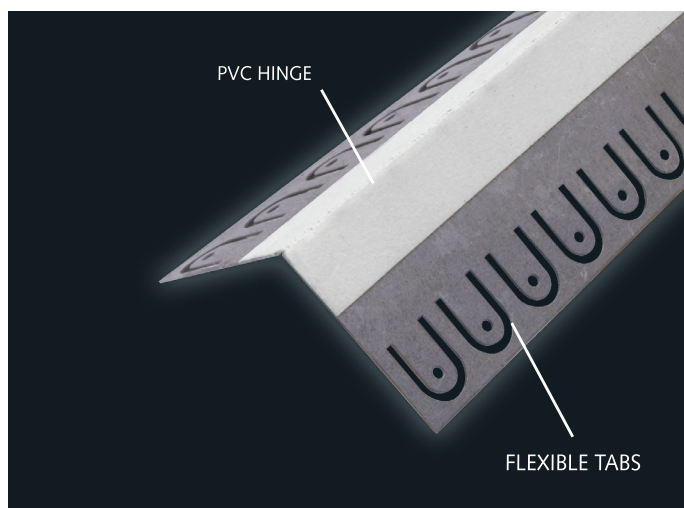
Eliminates wood backing in vaulted areas.

Makes easy work of complex, intricate ceiling applications that have no backing or uneven framing.

Provides straight continuous backing for fastening in tee-pee ceilings and butterfly vaults.

The time saved by the drywall finisher pays for the material costs many times over.

Combined use of X-Crack and Strait-Flex Gold or Mid-Flex flexible corner trim results in permanent protection against cracks.





## Patches

## Perma-Patch



How To Install  
Perma-Patch

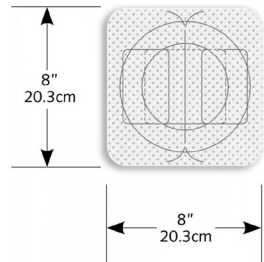
"Do-it-all" drywall patch that outperforms metal patches. Quickly repairs door knob damage to drywall. Makes easy repairs to outlets, can lights, and miscuts. Imprinted with can light and standard receptacle patterns for easy trimming. The most economical and permanent way to repair drywall.

Product Code	Width	Type	Pcs/Case Pack	Cases/Pallet
PP-2PK	8" x 8"	2 pack card	50 cards of 2	24
PP-100	8" x 8"	10 count bag	10 bags of 10	24
PP-500	8" x 8"	10 count bag	50 bags of 10	24

**PP-2PK**  
Item UPC: 7-51361-50382-1  
Case UPC: 7-51361-50383-8

**PP-100**  
Item UPC: 7-51361-50384-5  
Case UPC: 7-51361-50385-2

**PP-500**  
Item UPC: 7-51361-50384-5  
Case UPC: 7-51361-50387-6



## Roll-Patches



How To Install  
Roll-Patches

Continuous roll patch allows material to be cut to any length. Imprinted with standard electrical outlet patterns to make repairs easy. PVC fiber composite material. Drywall damage. All patching applications.

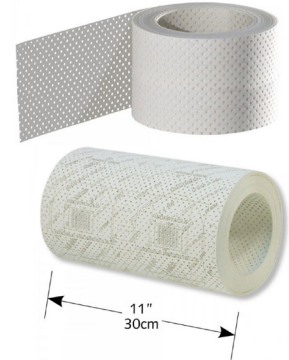
Product Code	Width	Length	Rolls/Case Pack	Cases/Pallet
RP5.5x20-6	5-1/2" (14cm)	20' (6.1m)	6	24
RP5.5x100-4	5-1/2" (14cm)	100' (30.5m)	4	24
RP11x20-6	11" (30cm)	20' (6.1m)	6	24
RP11x50-1	11" (30cm)	50' (30.5m)	1	—

**RP5.5x20-6**  
Item UPC: 7-51361-50374-6  
Case UPC: 7-51361-50375-3

**RP5.5x100-4**  
Item UPC: 7-51361-50376-0  
Case UPC: 7-51361-50377-7

**RP11x20-6**  
Item UPC: 7-51361-50378-4  
Case UPC: 7-51361-50379-1

**RP11x50-1**  
Item UPC: 7-51361-50380-7  
Case UPC: 7-51361-50381-4



## Ultra-Patch



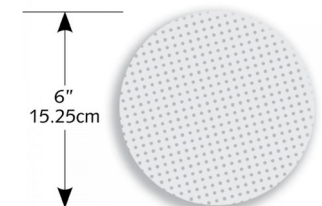
How To Install  
Ultra-Patch

Drywall patch that outperforms metal patches. Quickly repairs damage to drywall. The most economical and permanent way to repair drywall. Great solution for doorknob damage.

Product Code	Width	Type	Pcs/Case Pack	Cases/Pallet
ULTP-2PK	6" dia. (15.2cm)	2 pack card	50 cards of 2	24
ULTP-100	6" dia. (15.2cm)	10 count bag	10 bags of 10	—

**ULTP-2PK**  
Item UPC: 7-51361-50368-5  
Case UPC: 7-51361-50369-2

**ULTP-100**  
Item UPC: 7-51361-50370-8  
Case UPC: 7-51361-50371-5



## Patches

## Outlet-Patch



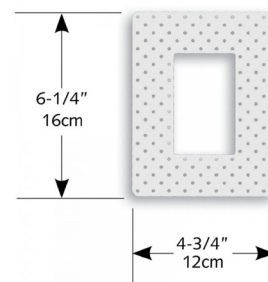
Electrical outlet-patch pre-cut to fit standard receptacle boxes. Repairs and reinforces mis-cut or damaged areas around receptacle box. Very fast, extremely strong.

Product Code	Width	Type	Pcs/Case Pack	Cases/Pallet
OP-2PK	4-3/4" (12cm) x 6-1/4" (16cm)	2 pack card	50 cards of 2	24
OP-100	4-3/4" (12cm) x 6-1/4" (16cm)	10 count bag	10 bags of 10	24
OP-500	4-3/4" (12cm) x 6-1/4" (16cm)	10 count bag	50 bags of 10	24

**OP-2PK**  
Item UPC: 7-51361-50387-6  
Case UPC: 7-51361-50389-0

**OP-100**  
Item UPC: 7-51361-50390-6  
Case UPC: 7-51361-50392-0

**OP-500**  
Item UPC: 7-51361-50390-6  
Case UPC: 7-51361-50394-4



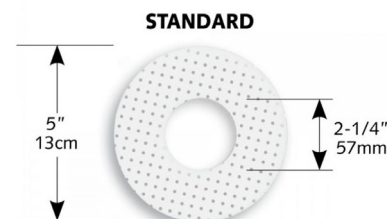
## Head-Patch



Sprinkler head replacement patch. Pre-cut to fit standard sprinkler head safety caps. Repairs and reinforces mis-cut or damaged areas around sprinkler head holes. Install in areas where patching cutouts were made too large.

Product Code	Size	Hole Size	Type	Bags/Case Pack	Cases/Pallet
HP-100	5" Dia. (13cm)	2-1/4" dia. (57mm)	10 count bag	10 bags of 10	24

Item UPC: 7-51361-50395-1  
Case UPC: 7-51361-50396-8



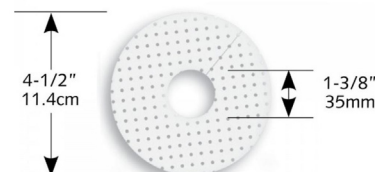
## Black-Iron Patch



Pre-cut to fit standard sprinkler pipes. Repairs and reinforces mis-cut or damaged areas around sprinkler pipe holes. Install in areas where patching cutouts were made too large. Sprinkler pipe relocation.

Product Code	Size	Hole Size	Type	Pcs/Case Pack	Cases/Pallet
BP-100	4-1/2" Dia. (11.4cm)	1-3/8" Dia. (35mm)	10 count bag	10 bags of 10	24

Item UPC: 7-51361-50399-9  
Case UPC: 7-51361-50400-2



## Pipe-Patch

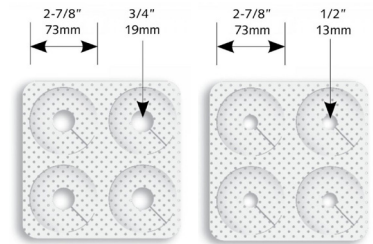


Copper pipe-patch that is pre-cut to fit 1/2" and 3/4" copper pipes. Great for fire taping. Pipe-Patch repairs and reinforces mis-cut drywall. .

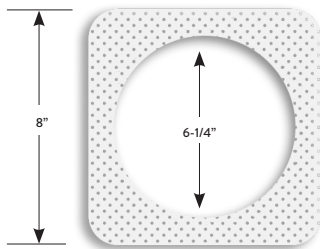
Product Code	Size	Hole Size	Type	Pcs/Case Pack	Cases/Pallet
PIP50-100	2-7/8". (73mm)	1/2" dia. (13mm)	100 count case	5 bags of 20	24
PIP75-100	2-7/8". (73mm)	3/4" dia. (19mm)	100 count case	5 bags of 20	24

**PIP50-100**  
Item UPC: 7-51361-50403-3  
Case UPC: 7-51361-50404-0

**PIP75-100**  
Item UPC: 7-51361-50406-4  
Case UPC: 7-51361-50408-8



## Can-Patch (Residential)

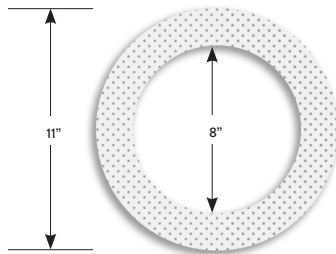


Pre-cut to fit standard residential ceiling lights. Repairs and reinforces mis-cut or damaged areas around ceiling lights and can light holes. Install in areas where patching cutouts were made too large. Ceiling lights and can light relocation.

Product Code	Size	Hole Size	Type	Pcs/Case Pack
CPR-100	8" (20.3cm) x 8" (20.3cm)	6-1/4" dia. (159mm)	100 count case	10 bags of 10

Item UPC: 7-51361-50411-8  
Case UPC: 7-51361-50412-5

## Can-Patch (Commercial)

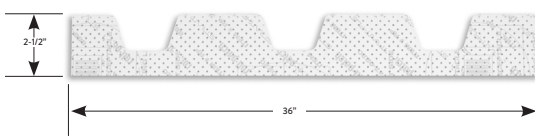


Pre-cut to fit standard commercial ceiling lights. Repairs and reinforces mis-cut or damaged areas around ceiling lights and can light holes. Install in areas where patching cutouts were made too large. Ceiling lights and can light relocation.

Product Code	Size	Hole Size	Type	Pcs/Case Pack
CPC-100	11" (28cm)	8" dia. (20.3cm)	100 count case	10 bags of 10

Item UPC: 7-51361-50415-6  
Case UPC: 7-51361-50416-3

## Deck-Patch



Custom manufactured to match the contours of different decking. Made in three foot sections for easy handling. Great as a template for cutting drywall to fit the corrugated decking. Perforated PVC fiber composite material.

Product Code	Size	Pcs/Case Pack	Cases/Pallet
DP36-34	2-1/2" (63mm) x 36" (91cm)	34 patches, 102 lf	24

Case UPC: 7-51361-50420-0

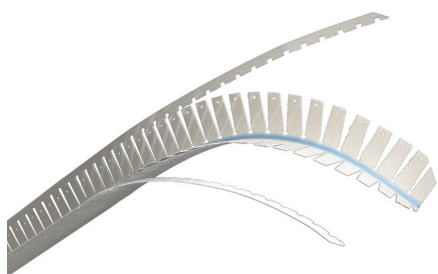
\*State corrugated roof deck manufacturer when ordering.



## Stick Corner Beads - Composite

- Impact resistant nose for high-traffic areas where bumps and dents to corners commonly occur.
- Installs square to the wall using one of Strait-Flex's specially designed rolling tool.
- Beaded nose creates a perfect clean edge.
- Second coat of compound can be applied immediately – very light skim coat to finish.
- Provides a beautiful corner without fuzz-up during finishing and sanding.
- Cuts easily.
- Custom lengths available, 2 skid minimum.

## Arch-Stick



Designed for outside 90° arched corners eliminating flat spots. Tear strips reduces transportation damage and is designed to make curved to straight transitions unnoticeable. Arched doors and windows, curved walls, ceilings, soffits, staircases, and groin barrel ceilings. Free-form, custom drywall applications where a seamless installation is required.

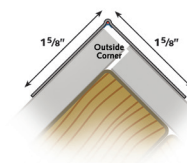
Product Code	Width	Length	Pcs/Case Pack	Cases/Pallet
AS-8	3-3/8" (86mm)	8' (244cm)	25pcs (200lf)	32
AS-10	3-3/8" (86mm)	10' (305cm)	25pcs (250lf)	32

**AS-8**

Case UPC: 7-51361-50168-1

**AS-10**

Case UPC: 7-51361-50172-8



## Big-Stick



Designed for high-traffic, outside vertical or horizontal 90° corners. Fast, clean, straight and strong installation. Spans over large gaps without shrinking. Impact resistant nose for high traffic areas where bumps and dents to corners most commonly occur. Provides a beautiful corner without fuzz-up during finishing and sanding.

Product Code	Width	Length	Pcs/Case Pack	Cases/Pallet
BS300-8	3" (76mm)	8' (244cm)	50pcs (400lf)	32
BS300-9	3" (76mm)	9' (274cm)	50pcs (450lf)	32
BS300-10	3" (76mm)	10' (305cm)	50pcs (500lf)	32

**BS300-8**

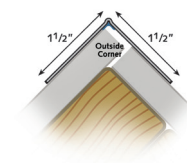
Case UPC: 7-51361-50164-3

**BS300-10**

Case UPC: 7-51361-50166-7

**BS300-9**

Case UPC: 7-51361-50181-0



How To Install  
Big-Stick

## Wet-Stick



Designed for vertical or horizontal outside 90° corners without the need of compound or fasteners. Water-activated adhesive on inside of stick. Impact resistant nose for high traffic areas where bumps and dents to corners most commonly occur. Small fill coat and fast drying. No delayed shrinking or edge cracking. Provides a beautiful corner without fuzz-up during finishing and sanding.

Product Code	Width	Length	Pcs/Case Pack	Cases/Pallet
WS-8	3" (76mm)	8' (244cm)	50pcs (400lf)	32
WS-9	3" (76mm)	9' (274cm)	50pcs (450lf)	32
WS-10	3" (76mm)	10' (305cm)	50pcs (500lf)	32

**WS-8**

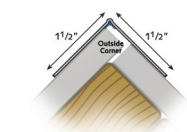
Case UPC: 7-51361-50240-4

**WS-10**

Case UPC: 7-51361-50244-2

**WS-9**

Case UPC: 7-51361-50242-8



## Stick Corner Beads - Paper-Faced Composite

- Clean, square, low-profile installation.
- Composite backing provides a tough, durable corner.
- Diamond-punched paper edging allows for easier feathering, faster drying, and the highest bonding strength. Also guarantees an even lay down of paper, providing maximum adhesion with no rippling or blistering.
- Paper surface is pre-treated to accept paint. Finishing compound is not required over laminated area.
- Perfect corners without paper fuzz-up during finishing and sanding.
- Straightens common framing irregularities.
- Custom lengths available, 2 skid minimum.

### IS-300



Designed for inside 90° corners where speed and strength are needed, and where large framing irregularities need to be overcome. Vertical or horizontal inside 90° corners with clean installation. Composite PVC provides a tough, durable corner.

Product Code	Width	Length	Pcs/Case Pack	Cases/Pallet
IS300-8	3" (76mm)	8' (244cm)	50pcs (400lf)	32
IS300-9	3" (76mm)	9' (274cm)	50pcs (450lf)	32
IS300-10	3" (76mm)	10' (305cm)	50pcs (500lf)	32

#### IS300-8

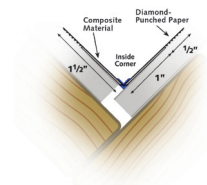
Case UPC: 7-51361-50276-3

#### IS300-10

Case UPC: 7-51361-50280-0

#### IS300-9

Case UPC: 7-51361-50278-7



How To Install  
IS-300

### OS-400



Designed for double 5/8" drywall applications and outside 90° corners where large voids and irregularities occur. Clean installation. Composite backing provides a tough, durable corner with no rust. Nose resists dents and ensures perfect corners without paper fuzz-up.

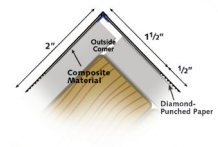
Product Code	Width	Length	Pcs/Case Pack	Cases/Pallet
OS400-8	4" (102mm)	8' (244cm)	50pcs (400lf)	32
OS400-9	4" (102mm)	9' (274cm)	50pcs (450lf)	32
OS400-10	4" (102mm)	10' (305cm)	50pcs (500lf)	32

#### OS400-8

Case UPC: 7-51361-50265-7

#### OS400-10

Case UPC: 7-51361-50270-1



How To Install  
OS-400

## Tools and Accessories

Mud-Pro<sup>2</sup>

- Designed to apply precise amounts of compound to inside and outside 90° corner beads, flex tapes, and outside bullnose and chamfer corner beads.
- Mix and store compound in same bucket.
- Five gallon compound capacity.
- No daily clean-up. Just fold legs; drop into 6" of water.
- Stainless steel construction for long-life.
- Includes Mud-Pro2 mounted to bucket, and second bucket.



Mud-Pro<sup>2</sup> is the fastest, cleanest, and most durable compound applicator on the market. Contact Customer Service with service questions or parts.

Product Code	Item Weight	Piece Size
MP2	14 lbs.	1

Item UPC: 7-51361-50421-7



How To Install  
MudPro<sup>2</sup>

## Super Bond



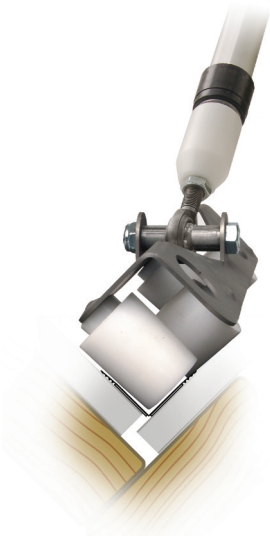
Drywall compound additive that ensures maximum bonding of tapes to painted surfaces, drywall, and plaster. Excellent additive to all-purpose compound when applying compound over painted surfaces. Add one bottle Super-Bond (16 oz.) to five gallon bucket of drywall compound. For individual taping pans, add one oz. Super-Bond per 12" taping pan. Compatible with all drywall compounds.

Product Code	Size	Pcs/Case Pack
SB-12	16 oz.	12

Item UPC: 7-51361-50435-4

Case UPC: 7-51361-50436-1

## Inside Rolling Tool



Specifically designed to speed application time of inside corner applications. For use with all inside corner products (excluding Wide-Flex) Squares up corner beads on walls. Attaches to common extension poles.

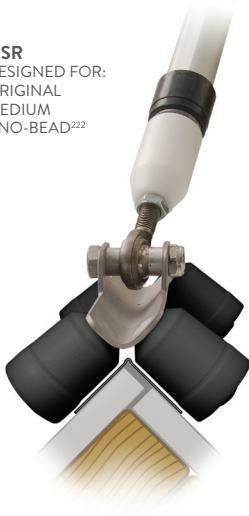
Product Code	Item Size	Case Weight	Case Size
ISR	8" x 1-7/8" x 1-7/8"	1.2 lbs	1

Item UPC: 7-51361-50423-1

Designed for: Original, Medium, Uno-Bead<sup>222</sup>, IS-300, Pro-Flex<sup>300</sup>, Gold, Mid-Flex and Perfect-90<sup>07M</sup>

## Outside Rolling Tools

**OSR**  
DESIGNED FOR:  
ORIGINAL  
MEDIUM  
UNO-BEAD<sup>222</sup>



Speeds application time. For use with all outside corner products. Squares up corner beads on walls. Attaches to common extension poles.

Product Code	Case Weight	Case Size
OSR	1.2 lbs	1
OSR-300	1.2 lbs	1
BSR-300	1.2 lbs	1
OSR-400	1.2 lbs	1
WSR	1.2 lbs	1

**Original Outside Tool**

Item No. OSR

Item UPC: 7-51361-50425-5

**OSR-400 Rolling Tool**

Item No. OSR400

Item UPC: 7-51361-50431-6

**BSR-300 Rolling Tool**

Item No. BSR300

Item UPC: 7-51361-50427-9

**OSR-300 Rolling Tool**

Item No. OSR300

Item UPC: 7-51361-50429-3

**Wet-Stick Rolling Tool**

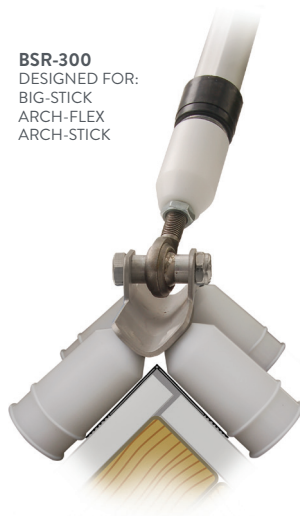
Item No. WSR

Item UPC: 7-51361-50433-0

**OSR-300**  
DESIGNED FOR:  
PRO-FLEX<sup>300</sup>  
GOLD  
MID-FLEX  
OS-300



**BSR-300**  
DESIGNED FOR:  
BIG-STICK  
ARCH-FLEX  
ARCH-STICK



**OSR-400**  
DESIGNED FOR:  
WIDE-FLEX  
OS-400



**WSR**  
DESIGNED FOR:  
WET-STICK  
WET-FLEX



## Tools and Accessories

## Drywall Shims



Drywall shims for floating butt-joints and framing irregularities. Uses include door jams, hanging cabinets, countertops, windows, and pre-fabricated shower stall inserts. Easy dispensing carton. Shims save time by shimming drywall to allow greater inset at joints. Shims improves quality as it assists in providing a level surface for better fits.

Product Code	Size	Pcs/Case Pack	Cases/Pallet
DS-100	1-1/2" (38mm) x 45" (114cm) x 1/16" (1.5mm)	100	100

Case UPC: 7-51361-50438-5



## Extension Pole

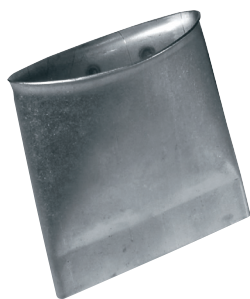


Fiberglass and aluminum pole. Telescopic extension pole for painters, drywall contractors, and moving companies. Five locking adjustment sizes. Comfort grip. Adjusts sizes from 3' (91cm) to 5' (152cm) at 6" (15cm) intervals.

Product Code	Item Size	Item Weight	Piece Size
EP	Adjusts from 3' to 5'	1.5 lb	1

Item UPC: 7-51361-50442-2

## Flex Folder

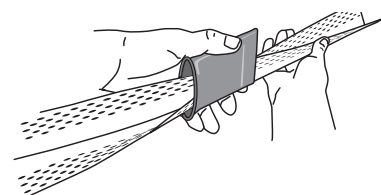


Hand-held tape folder that speeds the folding of all Strait-Flex® flexible composite corner beads to correct installation angles. Weakens inside hinge to help make angle adjustments.

Product Code	Item Size	Pcs/Case Pack
FF-12	3-7/16" (87mm) x 3-3/8" (86mm) x 3/8" (10mm)	12

Item UPC: 7-51361-50443-9

Case UPC: 7-51361-50444-6



## Scissors



Designed to cut time and tape. heavy-duty, stainless steel, soft-grip scissors, bent designs. Cuts tapes and composite corner beads easily.

Product Code	Item Size	Pcs/Case Pack
SK-12	8" (20cm)	12

Item UPC: 7-51361-50312-8

Case UPC: 7-51361-50313-5



## Accessory Specifications

### 1. PRODUCT NAME

Vinyl Corner Beads, Trims and Accessories for Gypsum Board

### 2. MANUFACTURER

ClarkDietrich  
8000 NW 79th Place  
Miami, Florida 33166  
Phone: 305-477-6464  
Fax: 305-477-4108  
Toll Free: 800-648-4695

### 3. PRODUCT DESCRIPTION

Drywall & Veneer accessories are manufactured by ClarkDietrich using lead-free, vinyl compounds, formulated for durability and toughness.

**Drywall & Veneer Accessories:** Corner Beads, Arch Beads/Archway, Inside Corner Trim, Bullnose Corner Beads, Bullnose Arch Beads/Archway, Bullnose Kerfed Bead, Bullnose J-Bead, Inside Corner Coves, Bullnose Corner Caps, Bullnose Transition Caps, Chamfered Corner Bead, J-Beads, Rip-Bead®, F-Bead, L-Bead, Ceiling Trim, Control Joints, Control Joint Intersections, Expansion Joint, Partition End Caps, Shadow Reveals, Channel Reveals, F-Channel Reveals, Channel Reveal Intersections, Colored Vinyl Extrusions and other miscellaneous vinyl drywall accessories.

**Durability:** Impervious to corrosion when coated with veneer plaster, wet joint compounds or when placed in contact with steel or aluminum frames. Vinyl accessories do not contain plasticizers which could migrate to the surface.

**Impact Resistance:** Due to superior impact resistance, rigid vinyl accessories are resistant to dents and kinks of corners and edges during construction.

**Corrosion Resistance:** Vinyl accessories are impervious to rust, corrosion, galvanic corrosion, electrolysis, and are not affected by fast setting joint compounds or topping compounds.

**Solid Color:** Gray, tan, brown and custom color options are available as a special order. Contact Customer Service at 1-800-648-4695 to order.

**Paint Adhesion Properties:** Excellent, no priming is required.

**Ignition Resistance:** Rigid vinyl is self extinguishing, and will not continue to support combustion once the flame source is removed, therefore it will not cause a fire to reignite or spread. It offers better resistance to burning than many other common building materials.

**Electrical Conductivity:** Rigid vinyl possesses low electrical conductivity.

**Thermal Conductivity:** Rigid vinyl is warm to the touch and has a very low transmission of heat or cold and it is considered an excellent insulator.

**Expansion and Contraction:** ClarkDietrich wall & ceiling accessories are manufactured with perforations in the flanges to allow finishing compounds or veneer plaster to flow through and bond to wallboard. Perforated flanges remain embedded in joint compound to reinforce the edges and corners. These factors, along with the fastening of accessories to substrate prior to coating makes the accessories part of the building unit and therefore will move with it as the temperature changes. Consequently, the coefficient of expansion of rigid vinyl has little to no bearing on the installation.

**Basic Uses:** To produce durable, straight edges, corners, smooth curvatures, and arches and to protect and preserve edges of wallboard from impact and condensation.

### 4. TECHNICAL DATA

#### Applicable Standards:

ASTM C1047  
ASTM D3678 Class 2

**Limitations:** Not recommended for exterior applications unless noted by exterior ASTM specification number.

### 5. INSTALLATION

#### Applicable Standards:

Installation shall be in accordance with ASTM standards and prevalent industry standards and good practices. Vinyl accessories shall be mechanically fastened to the substrate in straight lines or smooth curves.

### 6. AVAILABILITY AND COSTS

ClarkDietrich accessories are generally priced comparable to equivalent products manufactured in galvanized steel and substantially lower than zinc or aluminum. ClarkDietrich accessories that are in stock will usually be shipped within 24 hours after receipt of order. Accessories are marketed nationwide through distributors and building supply dealers.

### 7. PACKAGING

180 lb. test, single wall, corrugated boxes.

### 8. WARRANTY INFORMATION

Available upon request.

**Note:** All size references are nominal dimensions and subject to normal manufacturing tolerances.

## MATERIAL DATA

MINIMUM PROPERTIES	ASTM	@0°F	@32°F	@72°F
Tensile Strength, psi	D-638			6,500
Tensile Modulus, psi	D-638			335,000
Flexural Strength, psi	D-790			10,900
Flexural Modulus, psi	D-790			382,000
Izod Impact(ft.-lbs./in.)	D-256			2
MISCELLANEOUS MINIMUM PROPERTIES	ASTM		@72°F	
Heat Distortion Temperature (°F @ 264 psi)	D-648			167
Coefficient of Linear Thermal Expansion (in./in. °F x 10 <sup>-5</sup> )	D-696			3.60
Durometer "D" Hardness				83
Specific Gravity				1.47

## PATENTS AND TRADEMARKS

### Patents

U.S. Patent Nos. 5,689,922; 5,816,002; 6,070,374; 6,301,854;  
6,418,694; 6,688,069; 6,691,478; 6,691,487;  
6,708,460; 6,761,005; 7,240,459

Canadian Patent No. 2319346

Mexican Patent No. 243294

U.S. Patent No. 6,705,056 is owned by Daniel W. Tollenaar

U.S. Patent No. 7,882,676 is owned by Jeffery Thomas Ellis

### Trademarks

ClarkDietrich is a registered trademark of ClarkDietrich Building Systems. ProSTUD®, ProTRAK®, TRAKLOC®, TradeReady®, Spazzer®, FastClip™, EasyClip™, Fast Top™, Fast Strut™, FastBridge™, Uni-Clip™, Clip Express<sup>SM</sup>, Stronger Than Steel<sup>SM</sup>, FastBack™, HDS®, RedHeader PRO™, QuickTwist™, Slide Clip™, SubmittalPro®, SwiftClip™, A-Series™, B-Series™, D-Series™, E-Series™, G-Series™, GP-Series™, H-Series™, L-Series™, LS-Series™, LE-Series™, LA-Series™, S-Series™, T-Series™, U-Series™, X-Series™, MaxTrak®, Bar Guard™, DoubleTrack™ QC-Series™, Katz™, BackerBead®, E-Flange™, DiamondPlus®, ClarkDietrich Sound Clip™, RC Deluxe® Resilient Channel and 360TRAK™ are owned by ClarkDietrich.

DriCon® is a registered trademark of Arch Wood Protection, Inc.

FlamePRO® is a registered trademark of Koppers Performance Chemicals, Inc.

LEED® is a registered trademark of the U.S. Green Building Council.

Danback® is a registered trademark of Daniel W. Tollenaar.

UL® and UL Design® are trademarks of Underwriters Laboratories, Inc.

USG Sheetrock® is a registered trademark of USG Corporation.

## WARRANTY

### Warranty

Our products are manufactured in accordance with company standards and/or industry standards, as applicable. All ClarkDietrich products are covered by our standard warranty which is contained in our Standard Terms and Conditions of Sale and which will be provided upon request. Generally, we warrant our products will be free from defects in material and workmanship at the time of shipment, subject to the limitations stated in the warranty. Unless specifically agreed in writing by us with respect to specific orders, we do not make any warranty of merchantability or fitness for a particular purpose. The buyer is responsible to assure that buyer orders the appropriate product for any applicable code or specification requirements.

**NOTICE:** Our liability is expressly limited to replacement of defective products. We shall not be liable for incidental and consequential damages, nor for any loss caused by misuse or misapplication of our products. Any claim shall be deemed waived unless made in writing to us within thirty (30) days from the date it was or reasonably should have been discovered.



## CODE APPROVALS AND PERFORMANCE STANDARDS

ClarkDietrich products meet or exceed these applicable performance standards.

AISI "North American Specification for the Design of Cold-Formed Steel Structural Members, AISI S-100-2007 with 2010 supplement"

### ASTM American Society for Testing and Materials

#### Product specifications

ASTM C645	Non-structural steel framing members
ASTM C955	Load-bearing steel framing
ASTM C1047	Standard for Accessories for Gypsum Wallboard Veneer Base
AISI S200	Standard for Cold-Formed Steel Framing
AISI S220	Standard for Cold-Formed Steel Framing-Nonstructural Members
AISI S240	Standard for Cold-Formed Steel Framing-Structural Members

#### Material specifications

ASTM A1003	(NS33, ST33H, ST50H)
ASTM A653	Zinc-coated hot-dip process
ASTM D1784	Rigid Poly Vinyl Chloride (PVC) Compounds and Chlorinated Poly Vinyl Chloride (CPVC) Compounds
ASTM D3678	Standard Specification for Rigid Poly (Vinyl Chloride) (PVC) Interior Profile Extrusions

#### Installation standards

ASTM C840	Standard for Application and Finishing of Gypsum Board
-----------	--------------------------------------------------------

#### Gypsum Association

GA-214	Recommended levels of gypsum board finish
GA-216	Application and finishing of gypsum panel products

#### Protective coating standards

ASTM C645	Non-structural steel framing members
ASTM C955	Load-bearing steel framing
ASTM A653	Zinc-coated hot-dip process
AISI S200	Standard for Cold-Formed Steel Framing
AISI S220	Standard for Cold-Formed Steel Framing-Nonstructural Members
AISI S240	Standard for Cold-Formed Steel Framing-Structural Members

#### UL® Underwriters Laboratories testing standard

UL 263 "Fire Tests of Building Construction and Materials"

#### Additional code approvals

International Building Code

#### LEED® Services

##### BUILD GREEN with ClarkDietrich

ClarkDietrich is an active member of the U.S. Green Building Council and is committed to supplying quality products that are environmentally responsible. We are continually working to develop greener building products and sustainable business practices. ClarkDietrich steel framing helps contribute points toward LEED® certification. For more details contact Technical Services at 888-437-3244 or visit [www.clarkdietrich.com/LEED](http://www.clarkdietrich.com/LEED).

#### SustainabilityPro

Quickly access the product-specific information and certifications needed to calculate contributions to LEED® and other green building certification and rating systems - all in one platform. Find out more at [www.clarkdietrich.com/LEED](http://www.clarkdietrich.com/LEED).

ClarkDietrich has prepared this literature with the utmost diligence and care for accuracy and conformance to standards.

ClarkDietrich intends this information to be accurate, informative, and helpful as a selection guide for choosing ClarkDietrich products. However, this information is only to be used for guidance and is not intended to replace the design, drawings, specifications, and decisions of a professional architect or engineer.

ClarkDietrich or its affiliates shall not be responsible for incidental or consequential damages, directly or indirectly sustained, nor for loss caused by application of our products for other than their intended uses. Our liability is limited to replacement of defective products. Claims shall be deemed waived unless they are made to us in writing within thirty (30) days of the date a problem was or reasonably should have been discovered.

ClarkDietrich reserves the right to modify or change any information contained in this literature without notification.

ClarkDietrich is a proud member of the Steel Framing Industry Association (SFIA). Check the updated list of Certified Production Facilities at Intertek's website at [www.intertek.com](http://www.intertek.com).



USGBC and related logo is a trademark owned by the U.S. Green Building Council and is used by permission.

## LOCATIONS

### ClarkDietrich Manufacturing and Sales Locations:

<b>CALIFORNIA</b> Riverside P 951.360.3500	<b>CALIFORNIA</b> Sacramento P 951.360.3500	<b>CONNECTICUT</b> Bristol P 866.921.0023	<b>FLORIDA</b> Dade City P 352.518.4400
<b>FLORIDA</b> Miami P 305.477.6464	<b>GEORGIA</b> McDonough P 678.304.5500	<b>ILLINOIS</b> Rochelle P 800.659.0745	<b>MARYLAND</b> Baltimore P 410.477.4000
<b>MISSOURI</b> O'Fallon P 636.300.1411	<b>OHIO</b> Warren—East P 330.372.5564	<b>OHIO</b> Vienna P 330.372.4014	<b>OKLAHOMA</b> Oklahoma City P 405.896.2563
<b>TEXAS</b> Dallas P 214.350.1716	<b>TEXAS</b> Pasadena P 281.383.1617	<b>CLIP EXPRESS™</b> —East P 866.638.1908	

### ClarkDietrich Engineering Services. A full spectrum of solutions.

Toll-Free Phone: 877.832.3206  
Toll-Free Fax: 877.832.3208  
Technical Services: 888.437.3244  
Email: [engineering@clarkdietrich.com](mailto:engineering@clarkdietrich.com)

**CENTRAL** Merrillville, IN  
**NORTHEAST** Bristol, CT

**SOUTHEAST** McDonough, GA  
**WEST** Carlsbad, CA

Turn to ClarkDietrich for a complete lineup of steel construction products and services nationwide:

Interior Framing · Exterior Framing · Interior Finishing · Exterior Finishing · Clips/Connectors · Engineering



9050 Centre Pointe Dr. Suite 400  
West Chester, OH 45069

P 513.870.1100  
F 513.870.1300

[clarkdietrich.com](http://clarkdietrich.com)  
Clarkwestern Dietrich Building Systems LLC