

ProSTUD 1-5/8" Stud Chase Sound Assemblies

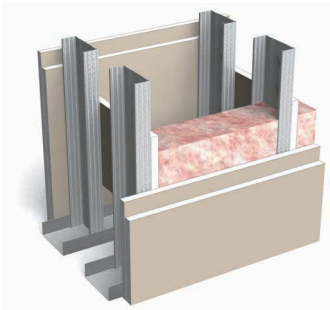
Two parallel rows

| Gypsum type | Side A | Side B | Insulation type | Stud spacing | STC Rating | Test report | Partition type |
|-------------|----------|----------|-----------------|--------------|--------------------|--------------------------|----------------|
| | | | | | ProSTUD 25 (15mil) | | |
| 5/8" Type X | 1 layer | 1 layer | R-13* unfaced | 24" | 55 | TL09-590 | 1 Similar |
| 5/8" Type X | 1 layer | 2 layers | R-13* unfaced | 24" | 59 | TL09-591 | 1 Similar |
| 5/8" Type X | 2 layers | 2 layers | R-13* unfaced | 24" | 61 | TL09-592 | 1 |

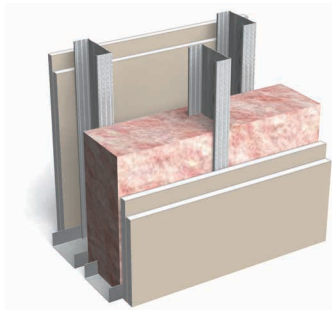
ProSTUD 2-1/2" Stud Chase Sound Assemblies

Staggered in opposite walls

| Gypsum type | Side A | Side B | Insulation type | Stud spacing | STC Rating | Test report | Partition type |
|-------------|----------|----------|-----------------|--------------|--------------------|--------------------------|----------------|
| | | | | | ProSTUD 25 (15mil) | | |
| 5/8" Type X | 1 layer | 1 layer | R-13* unfaced* | 24" | 58 | TL09-593 | 2 Similar |
| 5/8" Type X | 1 layer | 2 layers | R-13* unfaced* | 24" | 63 | TL09-594 | 2 Similar |
| 5/8" Type X | 2 layers | 2 layers | R-13* unfaced* | 24" | 65 | TL09-595 | 2 |



Partition Type 1



Partition Type 2

Notes:

- Sound Assemblies are certified by Western Electro-Acoustic Laboratories.
 - NVLAP Accredited for ASTM E90 & E413, ISO Certified.
 - See STC test reports at www.clarkdietrich.com/ProSTUD for detailed requirements of construction of wall assembly.
- * Values are the same for R-11 insulation.
 Contact ClarkDietrich Technical Services at 888-437-3244 for questions about ProSTUD sound assemblies.