

## TradeReady® Floor Joist Blocking

Quick and efficient system that prevents joist rotation and accommodates mechanical passing

TradeReady Floor Joist Blocking is one of the primary components that make up the TradeReady floor bracing system. TradeReady Blocking features a large extruded hole to accommodate HVAC, mechanical, plumbing and sprinkler runs.

TradeReady Blocking is pre-cut and formed to fit securely between the floor joists to prevent joist rotation. Designed to be used with joist up to 3" legs. Pre-punched holes in the connection legs are added for quick attachment to each floor joist. Structural blocking is an economical alternative to Tension Bracing (CDTB) or Diagonal Tension Strapping.

Floor Joist Blocking is typically used in conjunction with a continuous row of TradeReady Structural Bridging (TDSB) that ties the floor system to the structure allowing bracing against lateral movement.

### ALTERNATIVE PRODUCTS

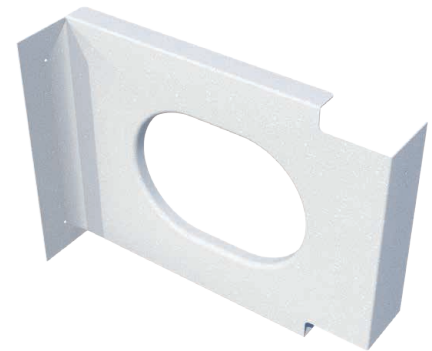
- Tension Bracing
- Diagonal Tension Strapping

### MATERIAL SPECIFICATIONS

- Gauge: 16 gauge (54mil)
- Design Thickness: 0.0566 inches
- Coating: G90
- ASTM: A1003

### INSTALLATION

Place the notched end of the TradeReady Blocking inside the open side of one floor joist. Attached each end of the TradeReady Blocking to each floor joist with (2) #10-16 screws in pre-punched holes.



### Floor Joist Blocking (JB)

Product code	Thickness		Joist Size (in)	Hole Size (in)	Packaging Pcs./Ctn						
	Mils (Gauge)	Design thickness (in)									
725JB12	54mil (16ga)	0.0566	7-1/4	4-1/2" x 7"	10						
800JB12			8	4-1/2" x 7"							
925JB12			9-1/4	6-1/2" x 9"							
1000JB12			10	6-1/2" x 9"							
1125JB12			11-1/4	6-1/2" x 9"							
1200JB12			12	6-1/2" x 9"							
1400JB12			14	6-1/2" x 9"							
725JB16			54mil (16ga)	0.0566		7-1/4	4-1/2" x 7"	10			
800JB16						8	4-1/2" x 7"				
925JB16						9-1/4	6-1/2" x 9"				
1000JB16						10	6-1/2" x 9"				
1125JB16						11-1/4	6-1/2" x 9"				
1200JB16						12	6-1/2" x 9"				
1400JB16						14	6-1/2" x 9"				
725JB24						54mil (16ga)	0.0566		7-1/4	4-1/2" x 7"	10
800JB24									8	4-1/2" x 7"	
925JB24									9-1/4	6-1/2" x 9"	
1000JB24									10	6-1/2" x 9"	
1125JB24									11-1/4	6-1/2" x 9"	
1200JB24									12	6-1/2" x 9"	
1400JB24									14	6-1/2" x 9"	