

Skewable Angle

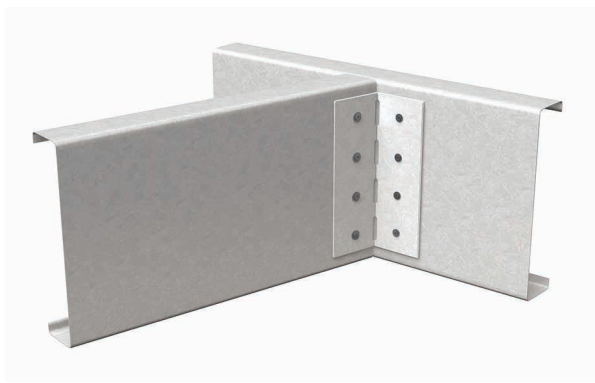
For rigid and off-angle attachments of joist-to-joist, joist-to-hip beam, or to other structural steel members.

ClarkDietrich skewable angles are used to make rigid attachments of joist-to-joist or joist-to-other miscellaneous framing. This clip is ideal for making off-angle attachments. It is easily field bent from 0° to 135°.

CAUTION: This clip can only be bent one time.

PRODUCT DIMENSIONS

- 2" x 2" x 3"
- 2" x 2" x 4-7/8"
- 2" x 2" x 5"
- 2" x 2" x 6-3/8"
- 2" x 2" x 7"
- 2" x 2" x 9"

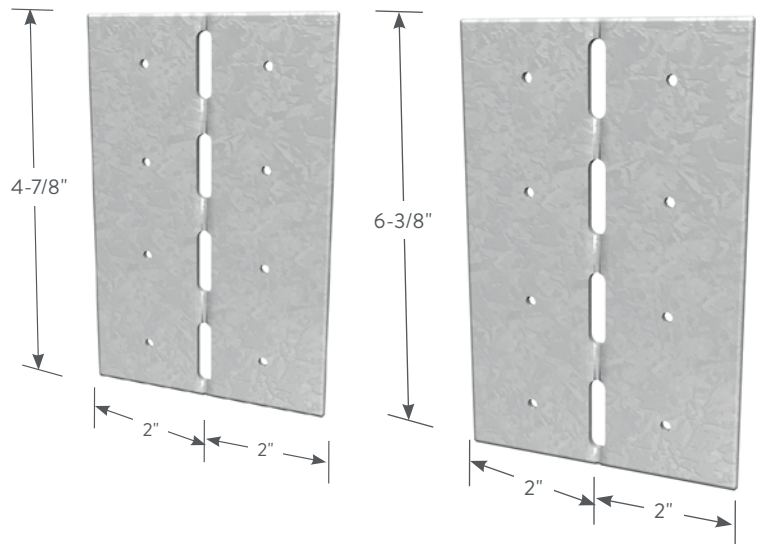


MATERIAL SPECIFICATIONS

- Gauge:** 18 gauge (43mil)
- Design Thickness:** 0.0451 inches
- Coating:** G90
- ASTM:** A653/A653M

INSTALLATION

Use all specified fasteners. ClarkDietrich field-skewable; bend one time only. Joist must be constrained against rotation when using a single SLS per connection.



Skewable Angles (SA)

| Product code | Thickness | | Size (in) | Packaging Pcs./Carton |
|--------------|--------------|-----------------------|-----------|-----------------------|
| | Mils (Gauge) | Design thickness (in) | | |
| SA4 | 43mil (18ga) | 0.0451 | 4-7/8 | 100 |
| SA6 | 43mil (18ga) | 0.0451 | 6-3/8 | 50 |
| SA3 | 43mil (18ga) | 0.0451 | 3 | 50 |
| SA5 | 43mil (18ga) | 0.0451 | 5 | 50 |
| SA7 | 43mil (18ga) | 0.0451 | 7 | 50 |
| SA9 | 43mil (18ga) | 0.0451 | 9 | 50 |

Skewable Angles (SA)

| Product code | Length (in) | Fasteners | Allowable Loads | |
|--------------|-------------|-----------|-----------------|----|
| | | | F1 | F2 |
| SA4 | 4-7/8 | 4 - #10 | 500 | — |
| SA6 | 6-3/8 | 6 - #10 | 760 | — |
| SA3 | 3 | 6 - #10 | * | * |
| SA5 | 5 | 8 - #10 | * | * |
| SA7 | 7 | 10 - #10 | * | * |
| SA9 | 9 | 14 - #10 | * | * |

Notes:

- 1 No load duration increase allowed.
- 2 Loads are for one part only.
- * Refer to clarkdietrich.com for additional information on allowable loads.

FLOOR JOIST FRAMING CONNECTIONS