

Header Cripple Stud Clip

Eliminates the header track material and is a economical alternative.

The ClarkDietrich Sound Clip is used in conjunction with 18mil (25ga) 7/8" deep drywall furring channel. It is used to fasten gypsum wallboard in various wall and floor-ceiling applications, while simultaneously providing acoustical separation. This significantly reduces the amount of airborne sound filtering from room to room. The ClarkDietrich Sound Clip adds notable STC points to most assemblies while reducing sound transfer.

PRODUCT DIMENSIONS

- 1-1/2" x 1-1/2" x 3-3/8"
- 1-1/2" x 1-1/2" x 3-3/4"
- 1-1/2" x 1-1/2" x 5-3/4"
- 1-1/2" x 1-1/2" x 7-3/4"

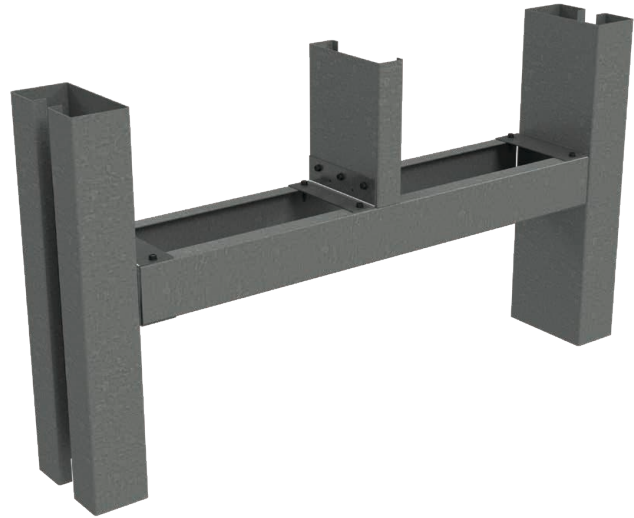
MATERIAL SPECIFICATIONS

- Gauge:** 16 gauge (54mil)
- Design Thickness:** 0.0451 inches
- Coating:** G90

- Gauge:** 14 gauge (68mil)
- Design Thickness:** 0.0713 inches
- Coating:** G90

INSTALLATION

Header Cripple Stud Clips are attached to the cold-formed steel (CFS) framing members using #10 minimum self-drilling screws driven through the clip holes into the steel framing. It is the responsibility of the design engineer to detail the attachment of clips and verify their capacity meets the application. Place the first two screws in each leg in the outermost screw holes. The next screws (if needed) are placed moving from the outermost holes toward the center, symmetrically.



Header Cripple Stud Clip

Product code	Mils (Gauge)	Design Thickness	Size (in)	For Header Size	Pcs./Bucket
RCSC-54	54mil (16ga)	0.0566"	1-1/2" x 1-1/2" x 3-3/8	3-5/8" web	400
			1-1/2" x 1-1/2" x 3-3/4	4" web	200
			1-1/2" x 1-1/2" x 5-3/4	6" web	100
			1-1/2" x 1-1/2" x 7-3/4	8" web	100
RCSC-68	68mil (14ga)	0.0713"	1-1/2" x 1-1/2" x 3-3/8	3-5/8" web	200
			1-1/2" x 1-1/2" x 3-3/4	4" web	200
			1-1/2" x 1-1/2" x 5-3/4	6" web	100
			1-1/2" x 1-1/2" x 7-3/4	8" web	100

