

## Grommet for Stud Knockouts

Protect and isolate electrical wiring and plumbing from contacting metal.

Grommets snap easily into stud knockouts and are used to protect electrical wiring and plumbing lines from contacting metal. They also help to prevent and eliminate pipe rattle. Grommets are commonly used in residential construction when metal conduit is not required by building code.

### INSTALLATION

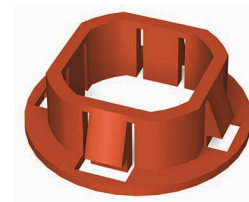
Install grommets in all stud knockouts where wiring and plumbing lines will be inserted. Use the snap-in bushing grommet for 1-5/8" and 2-1/2" wall studs and the standard grommet for all wall studs 3-1/2" and wider.

Install the snap-in bushing by pressing the bushing into the stud knockout. Make sure to engage the bushing lips to secure into place.

Install the standard grommet by first opening the grommet as illustrated above. Insert one side of the grommet through the knockout. Snap the grommet together so it engages with the metal sandwiched between the two plastic sides.



2-Piece Grommet



Snap-In Bushing



Grommet for 3-1/2" and Wider Studs

### Grommet (GROM)

Product code	Size (in)	Description	Pcs./Carton
GROM	3/4	For 1-5/8" and 2-1/2" studs	100
	1-1/2	For 3-1/2" and wider studs	100