

Extended FastClip™ Slide Clip

Curtain Wall/Bypass

Vertical building movement up to 3", and commonly used for large standoff conditions.

ClarkDietrich FCEC deflection clips are used to attach exterior curtain wall studs to the building structure and provide for vertical building movement independent of the cold-formed steel framing. The clips are available in standard lengths of 6", 8", 10" and 12" and are ideal for medium to larger standoff conditions. Extended FastClip™ deflection clips install quickly with screws, welds or powder-actuated fasteners, and provide adjustable standoff to ensure a plumb wall plane. FastClip deflection screws are provided with each clip to ensure friction-free sliding.

ALTERNATIVE PRODUCTS

- Fast Strut™
- Universal Bypass Clip

PRODUCT DIMENSIONS

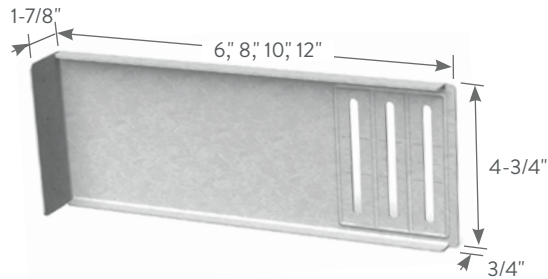
- 6" Extended FastClip: 1-7/8" x 6" x 4-3/4"
- 8" Extended FastClip: 1-7/8" x 8" x 4-3/4"
- 10" Extended FastClip: 1-7/8" x 10" x 4-3/4"
- 12" Extended FastClip: 1-7/8" x 12" x 4-3/4"

MATERIAL SPECIFICATIONS

- Gauge: 14 gauge (68mil)
- Design Thickness: 0.0713 inches
- Coating: G90
- Yield Strength: 50ksi
- ASTM: A653/A653M

INSTALLATION

Connections to the building can be made with screws, welds, powder-actuated fasteners or drill-in concrete anchors. Mechanical fasteners shall be located on the embossed marks given on the scored line of the 1-7/8" flange. Three FastClip deflection screws are used to attach the clip to the cold-formed steel framing. Screws shall be driven through the slotted holes and positioned to allow for the appropriate building deflection.

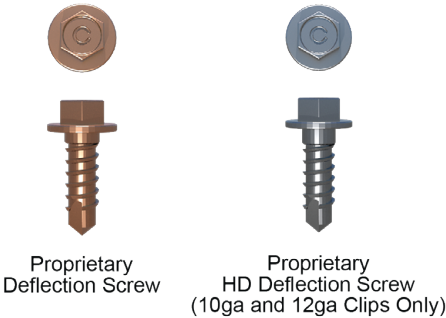


Extended FastClip™ Slide Clip (FCEC)

Product code	Thickness		Size (in)	Packaging Pcs./Bucket
	Mils (Gauge)	Design thickness (in)		
FCEC6-68	68mil (14ga)	0.0713	1-7/8 x 6 x 4-3/4	25
FCEC8-68	68mil (14ga)	0.0713	1-7/8 x 8 x 4-3/4	25
FCEC10-68	68mil (14ga)	0.0713	1-7/8 x 10 x 4-3/4	25
FCEC12-68	68mil (14ga)	0.0713	1-7/8 x 12 x 4-3/4	25
FCEC8-97	97mil (12ga)	0.1017	1-7/8 x 8 x 4-3/4	25

Includes 80 FastClip deflection screws per bucket.

Intertek CCRR-0208
U.S. Patent No. 6,688,069



DEFLECTION CONNECTIONS

Extended FastClip™ Slide Clip

Curtain Wall/Bypass

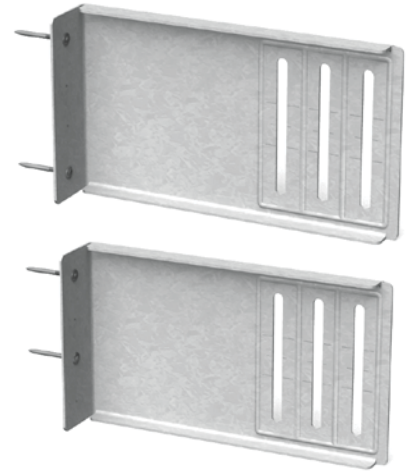
Extended FastClip™ (FCEC) Allowable Loads (lbs)

Anchor type	Stud thickness and yield strength	No. anchors to structure	Allowable load (lbs)
Buildex #12-24 Tek 5 Self-Drilling Screws to 3/16" Steel	33mil (20ga) 33ksi	2	689
		3	689
		4	689
	43mil (18ga) 33ksi	2	852
		3	852
		4	852
	54mil (16ga) 50ksi	2	852
		3	852
		4	852
	68mil (14ga) 50ksi	2	852
		3	852
		4	852
97mil (12ga) 50ksi	2	852	
	3	852	
	4	852	
PAF to 3/16" Steel*	33mil (20ga) 33ksi	2	689
		3	689
		4	689
	43mil (18ga) 33ksi	2	510
		3	765
		4	852
	54mil (16ga) 50ksi	2	852
		3	852
		4	852
	68mil (14ga) 50ksi	2	852
		3	852
		4	852
97mil (12ga) 50ksi	2	852	
	3	852	
	4	852	

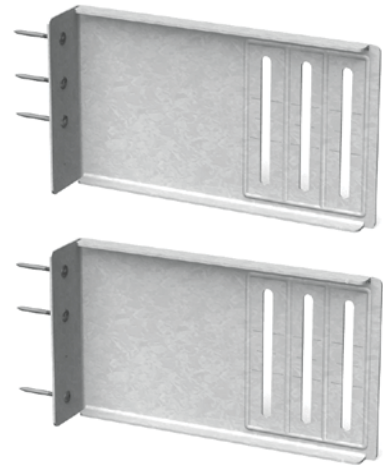
*See General Note #6 on page 9 for the definition of PAF, minimum requirements and other additional information.

Notes:

- 1 The 1/3 stress increase for wind shall not be used.
- 2 Attach building anchors to the structure according to the manufacturer's instructions. Anchors shall be installed through the embossments on the scored line of the clip as shown to the right. In no case shall anchors be installed more than 3/4" from the bend on the short leg of the clip. In cases of discrepancy between this information and the design engineer's details, the design engineer's details shall be followed.
- 3 It is the responsibility of the design professional to detail the project drawings for proper clip installation.
- 4 For connections to concrete, or other technical assistance, contact ClarkDietrich at 888-437-3244.
- 5 Buildex is a registered trademark of Illinois Tool Works, Inc.



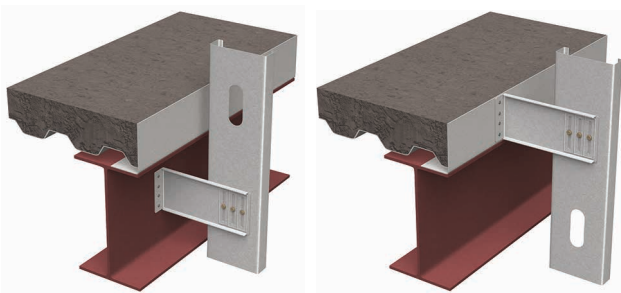
Location Options with (2) Anchors



Location Options with (3) Anchors



(4) Anchors



8" 97mil Extended FastClip™ Slide Clip

12ga Extended FastClip (FCEC) Allowable Loads (lbs)

Anchor type	Stud thickness and yield strength	No. anchors to structure	Allowable load* (lbs)	Allowable load# (lbs)
Weld (Fillet/ Flare Groove) E60XX	33mil (20ga) 33ksi	(3) 1" x 1/16"	608	608
	43mil (18ga) 33ksi	(3) 1" x 1/16"	905	905
	54mil (16ga) 50ksi	(3) 1" x 1/16"	1838	1838
	68mil (14ga) 50ksi	(3) 1" x 1/16"	2180	2180
	97mil (12ga) 50ksi	(3) 1" x 1/16"	2587	2587
Buildex #12-24 Self-Drilling Screws to 3/16" Steel	33mil (20ga) 33ksi	2	608	608
		3	608	608
		4	608	608
	43mil (18ga) 33ksi	2	905	905
		3	905	905
		4	905	905
	54mil (16ga) 50ksi	2	1004	1004
		3	1261	1506
		4	1261	1838
	68mil (14ga) 50ksi	2	1004	1004
		3	1261	1506
		4	1261	2008
97mil (12ga) 50ksi	2	1004	1004	
	3	1261	1506	
	4	1261	2008	
Hilti 0.157" X-U Powder-Actuated Fasteners (PAF) to 3/16" Steel	33mil (20ga) 33ksi	2	608	608
		3	608	608
		4	608	608
	43mil (18ga) 33ksi	2	905	905
		3	905	905
		4	905	905
	54mil (16ga) 50ksi	2	1064	1064
		3	1261	1596
		4	1261	1838
	68mil (14ga) 50ksi	2	1064	1064
		3	1261	1596
		4	1261	2129
97mil (12ga) 50ksi	2	1064	1064	
	3	1261	1596	
	4	1261	2129	
Generic Fasteners to 3/16" Steel	33mil (20ga) 33ksi	n	608	608
	43mil (18ga) 33ksi	n	905	905
	54mil (16ga) 50ksi	n	1261	1835
	68mil (14ga) 50ksi	n	1261	2180
	97mil (12ga) 50ksi	n	1261	2587
Ultimate Clip Capacity	33mil (20ga) 33ksi	—	—	1825
	43mil (18ga) 33ksi	—	—	2715
	54mil (16ga) 50ksi	—	—	5514
	68mil (14ga) 50ksi	—	—	6541
	97mil (12ga) 50ksi	—	—	7762

Notes:

- 1 Tabulated allowable loads do not include a 1/3 stress increase for wind.
- 2 * - Allowable capacity includes 1/8" service load limit.
- 3 # - Allowable capacity does not include 1/8" service load limit.
- 4 Allowable weld capacities were calculated by assuming 3 x 1" long welds at the ends and center of the clip bend.
- 5 Listed weld capacities were calculated assuming an E60XX electrode.
- 6 Mechanical fasteners should be attached to the structure in accordance with the manufacturer's instructions. All fasteners were assumed to be installed at a distance of 3/4" from the bend of the structural leg.
- 7 Generic fastener capacities were calculated by considering clip-stud interaction, behavior of clip in tension and compression only. The design professional has to detail for clip and desired fastener installation.
- 8 n - Number of generic mechanical fasteners required for connection to be determined by a design professional. Capacity should not exceed tabulated allowable loads.
- 9 Ultimate clip capacities were tabulated for the purpose of blast loads and they do not assume a safety factor.
- 10 Ultimate clip capacities were calculated by assuming 3 x 1" long weld at the structural leg of the clip (clip bend) welded to 3/16" steel.
- 11 It is the responsibility of the design professional to detail the project drawings for proper clip and fastener installation.
- 12 Buildex is a registered trademark of Illinois Tool Works, Inc.
- 13 Hilti is a registered trademark of Hilti Aktiengesellschaft Corporation.