

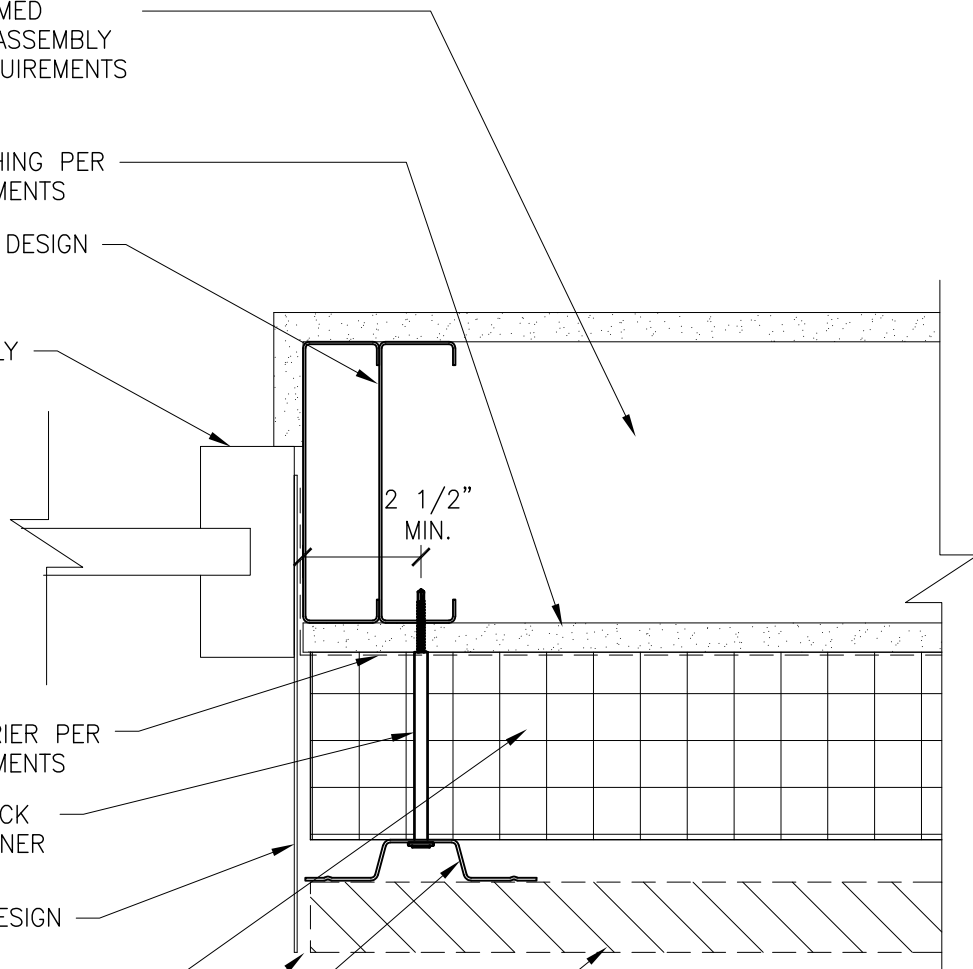
GENERAL NOTE:
STUD FASTENER SIZE AND SPACING
PER APPROVED SHOP DRAWINGS

STEEL STUD FRAMED
BACK-UP WALL ASSEMBLY
PER DESIGN REQUIREMENTS

EXTERIOR SHEATHING PER
DESIGN REQUIREMENTS

JAMB STUD PER DESIGN
REQUIREMENTS

WINDOW ASSEMBLY



WRB / AIR BARRIER PER
DESIGN REQUIREMENTS

TruFast GRIP-DECK
TUBESEAL® FASTENER

FLASHING PER DESIGN
REQUIREMENTS

EXTERIOR INSULATION PER
DESIGN REQUIREMENTS

GAP FOR AIR MOVEMENT
PER DESIGN REQUIREMENTS

ClarkDietrich ProChannel
Ci - VERTICAL

CLADDING PANEL SYSTEM
PER DESIGN REQUIREMENTS

WINDOW JAMB PLAN DETAIL

WITH ProChannel Ci - Vertical



Engineering Services: (877) 832-3206

Technical Services: (888) 437-3244

The CAD detail library is intended to provide general framing details only and does not replace the judgments and designs of a qualified architect and/or engineer. The details are provided as a starting tool to assist the user in creating and detailing cold-formed steel framing construction details. Each detail including accompanying text must be thoroughly evaluated and approved by a qualified architect or engineer. | Find over 500 CAD details at cad.clarkdietrich.com | © Copyright 2020 ClarkDietrich