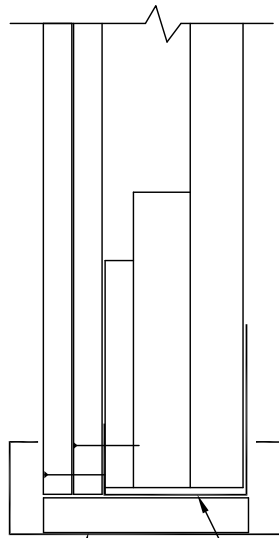


NOTE:

Openings and Penetrations in Shaftwall/Stairwell systems: As tested per ASTM E119/UL 263, these systems do not contain any Openings or Penetrations.

- a. All Opening and Penetration covering assemblies must be approved for use per Section 713.7 and 713.8 of the 2018 IBC.
- b. Any Opening or Penetration framing detail provided here is not a tested detail, but a generally accepted practice coinciding with approved assemblies in noted a. above.
- c. CT-Studs are Nonloadbearing, and where an Opening or Penetration is required the J-Tabbed Track must be supported by a designed structural element.
- d. All Opening or Penetration fire rated assemblies require independent structural support, as the Shaftwall/Stairwell systems are not designed or tested under this condition.



GYPSUM FILLER STRIPS
MAY BE REQUIRED WHERE
JAMBS ARE IN PLACE PRIOR
TO WALL CONSTRUCTION

ClarkDietrich BUILDING SYSTEMS
SHAFTWALL J TRACK
20ga. OR HEAVIER

HEADER DETAIL



ClarkDietrich.

Engineering Services: (877) 832-3206

Technical Services: (888) 437-3244

The CAD detail library is intended to provide general framing details only and does not replace the judgments and designs of a qualified architect and/or engineer. The details are provided as a starting tool to assist the user in creating and detailing cold-formed steel framing construction details. Each detail including accompanying text must be thoroughly evaluated and approved by a qualified architect or engineer. | Find over 500 CAD details at cad.clarkdietrich.com | © Copyright 2020 ClarkDietrich