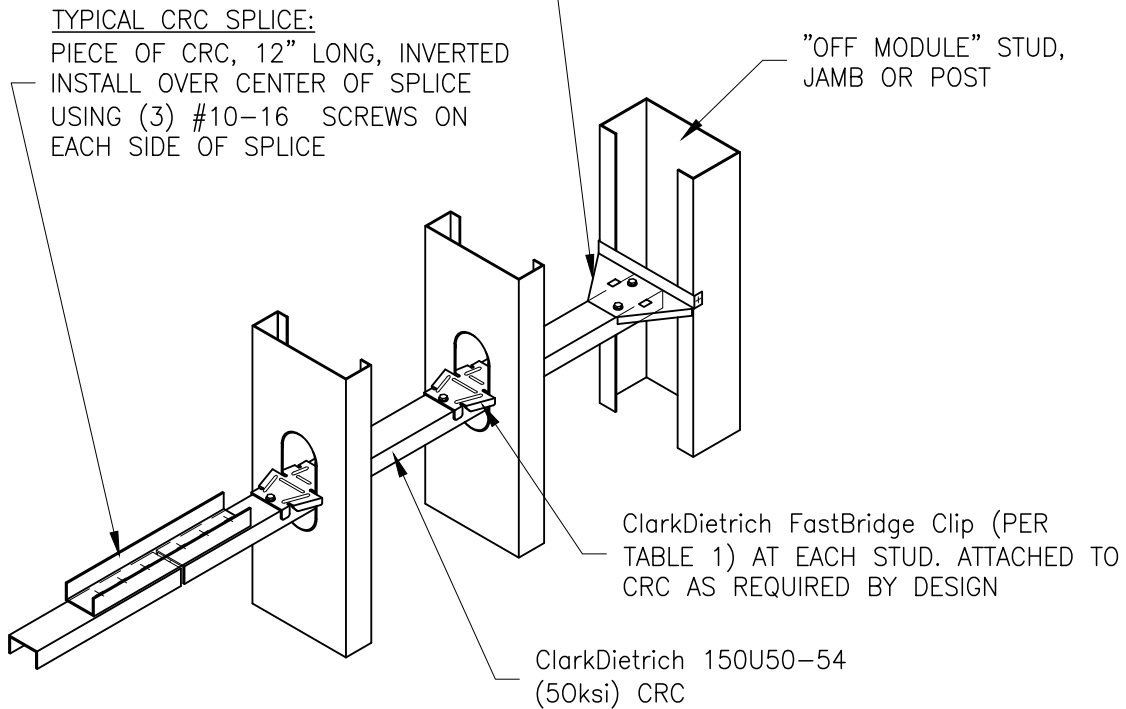


TABLE 1	
STUD THICKNESS	CONNECTOR
33 - 43 MIL	ClarkDietrich FB-43
54 - 97 MIL	ClarkDietrich FB-68

ClarkDietrich BRIDGING TERMINATION CLIP. SIZE AND THICKNESS AS REQUIRED BY DESIGN. PLACE CLIP OVER CRC USING GUIDES ON THE UNDERSIDE OF CLIP. ATTACH CLIP TO CRC W/ (2) #8 SCREWS. ATTACH CLIP TO STUD W/ (1) #8 SCREW IN EACH SIDE.



THIS DETAIL IS NOT SUITABLE FOR  
WALL STUDS DEEPER THAN 6"

## LATERAL BRACING CONNECTIONS

Using ClarkDietrich FastBridge & Bridging Termination Clip



Engineering Services: (877) 832-3206

Technical Services: (888) 437-3244

The CAD detail library is intended to provide general framing details only and does not replace the judgments and designs of a qualified architect and/or engineer. The details are provided as a starting tool to assist the user in creating and detailing cold-formed steel framing construction details. Each detail including accompanying text must be thoroughly evaluated and approved by a qualified architect or engineer. | Find over 500 CAD details at [cad.clarkdietrich.com](http://cad.clarkdietrich.com) | © Copyright 2020 ClarkDietrich