

A close-up, high-contrast photograph of several parallel drywall beads and trims. The beads have a series of small, raised rectangular bumps along their length. The trims are smooth and feature a series of evenly spaced circular holes. The lighting creates strong highlights and shadows, emphasizing the textures and forms of the materials.

**STRONGER
THAN STEEL.SM**

INTERIOR FINISHING

Occupants never see the effort put into building the wall. They only see the finish.

ClarkDietrich offers an unmatched selection of interior finishing products—all designed for durability and finesse.

Paper-faced metal beads and trims combine galvanized metal with high-grade paper tape to provide cost-effective, problem-free, compound-embedded drywall finishing. Our products allow the joint compound applied to the underside to seep through perforations in the paper to provide superior adhesion and bonding to gypsum. Corner and edge cracking are virtually eliminated because beads float with the gypsum, independent of framing movement or settling.

- Smoothest finish available
- Tape-on products provide superior adhesion and bonding

Traditional metal drywall beads and trims provide crisp, clean and straight protection for gypsum wallboard construction. Available in a wide selection of products and sizes, metal is the versatile choice for almost any drywall finish condition. Metal beads and trims can be nailed, screwed, stapled or clinched in place and finished with joint compound. They are low-cost, easily applied and provide high-quality, long-lasting professional finishes.

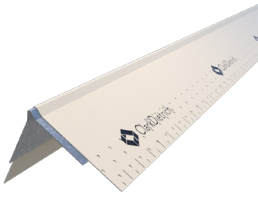
- Strong; dent- and impact-resistant
- Precision manufactured ensuring straight, sharp and crisp edges and corners
- Corrosion-resistant

ClarkDietrich PAPER-FACED TAPE-ON BEADS

ClarkDietrich paper-faced tape-on beads combine galvanized metal corner and edge protection with high-grade paper tape to provide cost-effective, problem-free outside drywall corner finishing. They're available in a number of different widths to suit most wallboard applications. Wider flange beads are used to cover imperfect corners, while shorter flanges are used to achieve maximum efficiency.

- Substantially reduces joint compound consumption and eliminates one finish coat
- Does not require nails, staples, screws or crimps
- Impervious to "scuffing" and "fluffing-up"
- Will not be damaged by sanding
- Superior adhesion, bonding and paintability

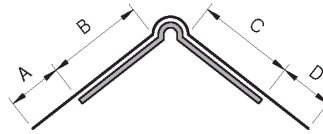
PAPER-FACED CORNER BEAD



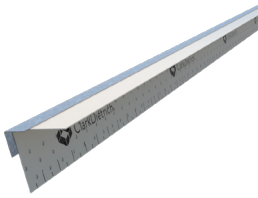
90° outside corner tape-on bead virtually eliminates corner cracks, edge chips and nail pops. Applied using joint compound, the beads don't require mechanical fasteners. Helps reduce labor and material costs by reducing the amount of joint compound needed, and also eliminating one pass of finishing.

Product code	Style	Dimensions (in)				Pcs/Ctn
		A	B	C	D	
CD1-WU	Standard Leg	5/8	1/2	3/4	5/8	50
CD1-WE	Equal Leg	3/4	3/4	3/4	3/4	
CD1-XWU	Extra Wide	5/8	7/8	5/8	3/4	
CD1-XWE	Extra Wide Equal	5/8	7/8	7/8	5/8	
CD1-SWE	Super Wide Equal	5/8	1-1/8	1-1/8	5/8	

Standard lengths are 8' and 10'. Other lengths available.



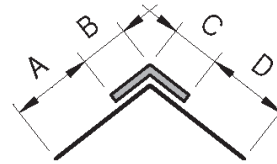
PAPER-FACED INSIDE CORNER BEAD



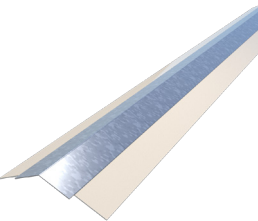
Tape-on inside 90° paper-faced corner bead provides very straight and precise inside corners. The rigid, steel-reinforced inside corners provide a durable guide to achieve exceptionally straight and sharp inside corners. Embed in joint compound and press firmly into place. Remove excess compound with a drywall knife.

Product code	Style	Dimensions (in)				Pcs/Ctn
		A	B	C	D	
CD2-E or P2	Standard Angle	5/8	3/8	3/8	5/8	50

Standard lengths are 8' and 10'. Other lengths available.



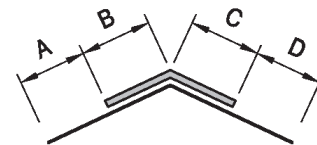
PAPER-FACED INSIDE SPLAYED CORNER BEAD



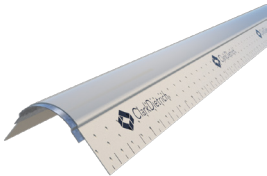
Off-angle tape-on 120/135° inside (or reverse splayed) bead is used to achieve a crisp, clean, straight-finished inside off-angle drywall finish. This bead can be used for inside corner angles between 120° and 135°. As with all tape-on beads, off-angle bead is applied using joint compound. No mechanical fasteners are required.

Product code	Style	Dimensions (in)				Pcs/Ctn
		A	B	C	D	
CD2-O	Off-Angle	5/8	5/8	5/8	5/8	50

Standard lengths are 8' and 10'. Other lengths available.



PAPER-FACED BULLNOSE TAPE-ON



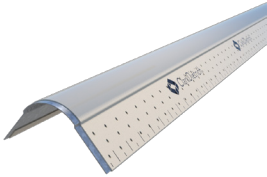
3/4" tape-on bullnose corner bead is used to create a smooth, rounded look to standard drywall corners. It adds contemporary styling and a sense of openness to any room. Apply in the same manner as all other tape-on beads. Gypsum boards must be cut back 3/4" to accommodate the bullnose and ensure a flush fit.

Product code	Style	Dimensions (in)			Pcs/Ctn
		A	B	C	
CD1-B	Standard	7/8	3/4	7/8	50

Standard lengths are 8' and 10'. Other lengths available.



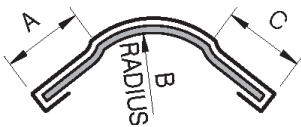
PAPER-FACED BULLNOSE NAIL-ON



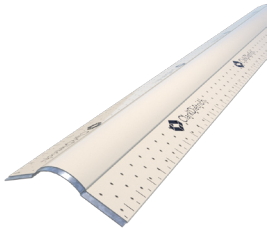
3/4" nail-on bullnose corner bead is used to create a smooth, rounded look to standard drywall corners. Nail-on bullnose adds contemporary styling and a sense of openness to any room. Nails or mechanical fasteners are used to secure the bead to the wallboard.

Product code	Style	Dimensions (in)			Pcs/Ctn
		A	B	C	
CD1-BN	Standard	5/8	3/4	5/8	50

Standard lengths are 8' and 10'. Other lengths available.



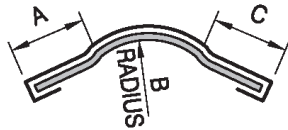
PAPER-FACED BULLNOSE SPLAYED NAIL-ON



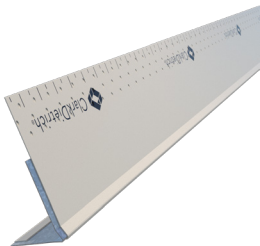
Off-angle nail-on bullnose bead, also known as splayed bullnose or 120°/135° bullnose corner bead, is used to provide a rounded bullnose finish for outside off-angle drywall intersections. Nails or mechanical fasteners are used to secure the bead to the wallboard.

Product code	Style	Dimensions (in)			Pcs/Ctn
		A	B	C	
CD1-BNSN	Off-Angle	5/8	3/4	5/8	50

Standard lengths are 8' and 10'. Other lengths available.

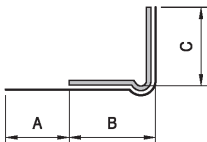


PAPER-FACED L-TRIM

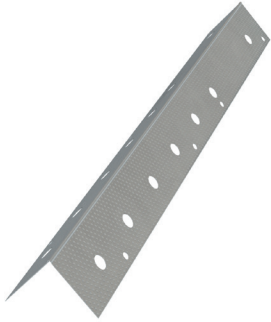


L-trims are used to finish the ends of wallboard where it abuts dissimilar surfaces, such as suspended ceilings, beams, plaster, masonry or untrimmed door and window jambs. Applied in the same manner as all other tape-on beads-joint compound embeds the paper-faced bead to the wallboard paper.

Product code	Style	Dimensions (in)			Pcs/Ctn
		A	B	C	
CDL-3/8	3/8"	1-1/4	1-11/16	7/16	50
CDL-3/4	3/4"	1	15/16	13/16	
CDL-1	1"	7/8	1-3/16	1-1/16	
CDL-1-1/8	1-1/8"	7/8	1-1/16	1-1/8	
CDL-1-1/4	1-1/4"	7/8	15/16	1-1/4	



103 Deluxe® CORNER BEAD



ClarkDietrich 103 Deluxe® corner bead combines a unique manufacturing process, with specially enhanced steel to provide consistent, high-quality finishing, and protection at drywall corners. Nail, staple, screw or clinch into place.

Product code	Size		Pcs/Ctn
	Width (in)	Length	
CBU (dull finish)	1-1/4" x 1-1/4"	8' 0"	63
		9' 0"	56
		10' 0"	50
		12' 0"	42

Other lengths available: 6'9", 6'10" and 7'0".

Quicksilver™ CORNER BEAD



Quicksilver™ corner bead is a hot-dipped, galvanized bead that offers superior corrosion protection. This bead is ideal for humid, moisture-prone conditions. Quicksilver corner bead provides a high-quality finish and protection at drywall corners. Nail, staple, screw or clinch into place.

Product code	Size		Pcs/Ctn
	Width (in)	Length	
CBS (shiny finish)	1-1/4 x 1-1/4	6' 9"	75
		6' 10"	75
		7' 0"	72
		8' 0"	63
		9' 0"	56
		10' 0"	50
		12' 0"	42

CLINCH-ON DULL CORNER BEAD



Clinch-On corner bead's knurled and perforated flanges offer superior compound adhesion for smooth, straight finishes. Corner bead attachments are accomplished by nailing, stapling, screwing or clinching through the flanges.

Product code	Size		Pcs/Ctn
	Width (in)	Length	
CBCO (dull gray)	1-1/4 x 1-1/4	6' 0"	75
		6' 9"	75
		6' 10"	75
		7' 0"	72
		8' 0"	63
		9' 0"	56
		10' 0"	50
		12' 0"	50

*Not available in all geographic areas.

CLINCH-ON HOT-DIPPED CORNER BEAD

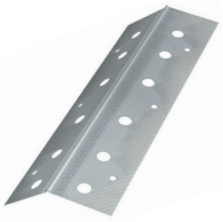


Clinch-On hot-dipped corner bead offers the identical roll-formed precision as its counterpart. Hot-dipped galvanized metal corner bead (meets ASTM C1047) provides enhanced corrosion protection and reinforcement at exposed 90° corners. Flanges are knurled and perforated to ease joint compound adhesion and nail attachment.

Product code	Size		Pcs/Ctn
	Width (in)	Length (ft)	
CBCS (shiny)	1-1/4 x 1-1/4	6' 9"	75
		7'	75
		8'	63
		9'	56
		10'	50
		12'	50

*Not available in all geographic areas.

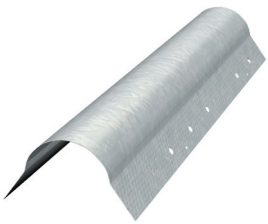
SPLAYED CORNER BEAD



ClarkDietrich's 120/135° corner bead, also referred to as splayed or off-angle bead, provides a clean, crisp finished look at off-angle intersections. Specially enhanced steel for corrosion protection and superior compound adhesion, it's easy to attach and finish.

Product code	Size		Pcs/Ctn
	Width (in)	Length (ft)	
CB12 (dull finish)	1-1/4 x 1-1/4	8	63
		10	50

BULLNOSE 90° CORNER BEAD

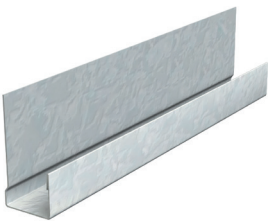


Bullnose corner bead is used to create a smooth, rounded look to standard drywall corners. Bullnose adds contemporary styling and a sense of openness to any room. Bullnose bead is nailed, screwed or stapled in place and finished with joint compound. Bullnose is available with a galvanized finish meeting ASTM C1047 standard.

Product code	Size		Pcs/Ctn
	Radius (in)	Length (ft)	
CBB	3/4	8	50
		9	45
		10	40

Other lengths available: 7'0", 8'6" and 10'6".

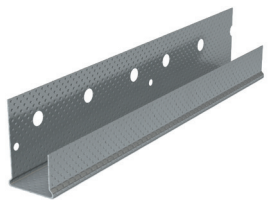
METAL J-TRIM #400



ClarkDietrich metal J-trim is a reveal-type galvanized steel casing that provides maximum corrosion protection and neat finished edges to drywall terminations around door and window openings. It also delivers a clean trim line at intersections or where gypsum panels abut dissimilar surfaces, such as columns and window mullions. Hemmed edges allow quick installation and do not require joint compound.

Product code	Size		Pcs/Ctn
	Width (in)	Length (ft)	
M400	3/8	8	50
		10	50
M401	1/2	8	50
		10	50
M402	5/8	8	50
		10	50

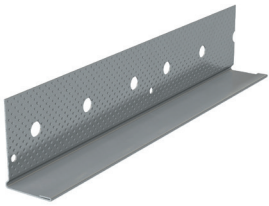
METAL U-TRIM #200



U-trim, or Spackle J, provides maximum protection and clean finished edges on gypsum panels around door and window openings, and when wallboard abuts dissimilar surfaces, such as suspended ceilings, beams, plaster, masonry and concrete. It's easily installed by sliding trim over the edge of the board and nailing/ screwing through the knurled (long) flange—which also enhances compound adhesion.

Product code	Size		Pcs/Ctn
	Width (in)	Length (ft)	
M20A	1/2	8	50
		10	50
	5/8	8	50
		10	50

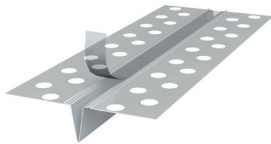
METAL L-TRIM #200-B



Metal L-trim provides a clean finished edge at door and window openings or when wallboard abuts dissimilar surfaces, such as suspended ceilings, beams, plaster, masonry and concrete. Installed after the gypsum panels are already in place—unlike Spackle J which must be installed during gypsum panel installation—L-trim is easily attached with screws or nails. A hemmed front flange provides rigidity.

Product code	Size		Pcs/Ctn
	Width (in)	Length (ft)	
M20B	1/2	8	50
		10	50
	5/8	8	50
		10	50

093 ZINC CONTROL JOINT



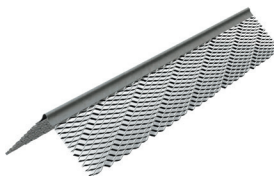
ClarkDietrich 093 zinc control joint is applied between abutting gypsum panels, and is used to relieve stresses of expansion and contraction of drywall and veneer plaster systems in large ceiling and wall expanses over 30' in length. It's typically installed from door header to ceiling, from floor to ceiling in long partition runs, and from wall to wall in large ceiling areas—and for interior or exterior applications.

Product code	Size		Pcs/Ctn
	Grounds (in)	Length (ft)	
ZNCJ	3/32	10	25

Note: Where fire and sound control are prime considerations, an approved seal must be installed behind the control joint.

Material: 0.013 Zinc for increased corrosion resistance.

Mini-Bead™ 800 AND 900 CORNER BEAD



Mini-Bead™ 800 and 900 are fine-mesh corner beads used to provide corner reinforcement. Mini-Bead 800 has 1/16" grounds for one-coat veneer plaster and 90 keys per linear foot for excellent bonding and strong corners. Mini-Bead 900 has 3/32" grounds for two-coat veneer plaster systems.

Product code	Size			Pcs/Ctn
	Grounds (in)	Width (in)	Length (ft)	
MB80 (galvanized)	1/16	1-1/4	8	60
MB90 (galvanized)	3/32	1-1/4	10	60
ZB80 (zinc)	1/16	1-1/4	10	60
ZB90 (zinc)	3/32	1-1/4	10	60

Note: Zinc Mini-Beads should be used in exterior finish systems.

PATENTS AND TRADEMARKS

Patents

U.S. Patent Nos. 5,689,922; 5,816,002; 6,070,374; 6,301,854;
6,418,694; 6,688,069; 6,691,478; 6,691,487;
6,708,460; 6,761,005; 7,240,459

Canadian Patent No. 2319346

Mexican Patent No. 243294

U.S. Patent No. 6,705,056 is owned by Daniel W. Tollenaar

U.S. Patent No. 7,882,676 is owned by Jeffery Thomas Ellis

Trademarks

ClarkDietrich is a registered trademark of ClarkDietrich Building Systems. ProSTUD®, ProTRAK®, TRAKLOC®, TradeReady®, Spazzer®, FastClip™, EasyClip™, Fast Top™, Fast Strut™, FastBridge™, Uni-Clip™, Clip ExpressSM, Stronger Than SteelSM, FastBack™, HDS®, RedHeader PRO™, QuickTwist™, Slide Clip™, SubmittalPro®, SwiftClip™, A-Series™, B-Series™, D-Series™, E-Series™, G-Series™, GP-Series™, H-Series™, L-Series™, LS-Series™, LE-Series™, LA-Series™, S-Series™, T-Series™, U-Series™, X-Series™, MaxTrak®, Bar Guard™, DoubleTrack™ QC-Series™, Katz™, BackerBead®, E-Flange™, DiamondPlus®, ClarkDietrich Sound Clip™, RC Deluxe® Resilient Channel and 360TRAK™ are owned by ClarkDietrich.

DriCon® is a registered trademark of Arch Wood Protection, Inc.

FlamePRO® is a registered trademark of Koppers Performance Chemicals, Inc.

LEED® is a registered trademark of the U.S. Green Building Council.

Danback® is a registered trademark of Daniel W. Tollenaar.

UL® and UL Design® are trademarks of Underwriters Laboratories, Inc.

USG Sheetrock® is a registered trademark of USG Corporation.

WARRANTY

Warranty

Our products are manufactured in accordance with company standards and/or industry standards, as applicable. All ClarkDietrich products are covered by our standard warranty which is contained in our Standard Terms and Conditions of Sale and which will be provided upon request. Generally, we warrant our products will be free from defects in material and workmanship at the time of shipment, subject to the limitations stated in the warranty. Unless specifically agreed in writing by us with respect to specific orders, we do not make any warranty of merchantability or fitness for a particular purpose. The buyer is responsible to assure that buyer orders the appropriate product for any applicable code or specification requirements.

NOTICE: Our liability is expressly limited to replacement of defective products. We shall not be liable for incidental and consequential damages, nor for any loss caused by misuse or misapplication of our products. Any claim shall be deemed waived unless made in writing to us within thirty (30) days from the date it was or reasonably should have been discovered.

CODE APPROVALS AND PERFORMANCE STANDARDS

ClarkDietrich products meet or exceed these applicable performance standards.

AISI "North American Specification for the Design of Cold-Formed Steel Structural Members, AISI S-100-2007 with 2010 supplement"

ASTM American Society for Testing and Materials

Product specifications

ASTM C645	Non-structural steel framing members
ASTM C955	Load-bearing steel framing
AISI S200	Standard for Cold-Formed Steel Framing
AISI S220	Standard for Cold-Formed Steel Framing-Nonstructural Members
AISI S240	Standard for Cold-Formed Steel Framing-Structural Members

Material specifications

ASTM A1003 (NS33, ST33H, ST50H)	
ASTM A653	Zinc-coated hot-dip process

Protective coating standards

ASTM C645	Non-structural steel framing members
ASTM C955	Load-bearing steel framing
ASTM A653	Zinc-coated hot-dip process
AISI S200	Standard for Cold-Formed Steel Framing
AISI S220	Standard for Cold-Formed Steel Framing-Nonstructural Members
AISI S240	Standard for Cold-Formed Steel Framing-Structural Members

UL® Underwriters Laboratories testing standard

UL 263 "Fire Tests of Building Construction and Materials"

Additional code approvals

International Building Code

ClarkDietrich is a proud member of the Steel Framing Industry Association (SFIA). Check the updated list of Certified Production Facilities at Intertek's website at www.intertek.com.

LEED® Services

BUILD GREEN with ClarkDietrich

ClarkDietrich is an active member of the U.S. Green Building Council and is committed to supplying quality products that are environmentally responsible. We are continually working to develop greener building products and sustainable business practices. ClarkDietrich steel framing helps contribute points toward LEED® certification. For more details contact Technical Services at 888-437-3244 or visit www.clarkdietrich.com/LEED.

ClarkDietrich has prepared this literature with the utmost diligence and care for accuracy and conformance to standards.

ClarkDietrich intends this information to be accurate, informative, and helpful as a selection guide for choosing ClarkDietrich products. However, this information is only to be used for guidance and is not intended to replace the design, drawings, specifications, and decisions of a professional architect or engineer.

ClarkDietrich or its affiliates shall not be responsible for incidental or consequential damages, directly or indirectly sustained, nor for loss caused by application of our products for other than their intended uses. Our liability is limited to replacement of defective products. Claims shall be deemed waived unless they are made to us in writing within thirty (30) days of the date a problem was or reasonably should have been discovered.

ClarkDietrich reserves the right to modify or change any information contained in this literature without notification.



USGBC and related logo is a trademark owned by the U.S. Green Building Council and is used by permission.

LOCATIONS

ClarkDietrich Manufacturing and Sales Locations:

CALIFORNIA Riverside P 951.360.3500	CALIFORNIA Sacramento P 951.360.3500	CONNECTICUT Bristol P 866.921.0023	FLORIDA Dade City P 352.518.4400
FLORIDA Miami P 305.477.6464	GEORGIA McDonough P 678.304.5500	ILLINOIS Rochelle P 800.659.0745	MARYLAND Baltimore P 410.477.4000
MISSOURI O'Fallon P 636.300.1411	OHIO Warren—East P 330.372.5564	OHIO Vienna P 330.372.4014	TEXAS Dallas P 214.350.1716
TEXAS Pasadena P 281.383.1617	CLIP EXPRESS™ —East P 866.638.1908		

ClarkDietrich Engineering Services. A full spectrum of solutions.

Toll-Free Phone: 877.832.3206
Toll-Free Fax: 877.832.3208
Technical Services: 888.437.3244
Email: engineering@clarkdietrich.com

CENTRAL Merrillville, IN
NORTHEAST Bristol, CT
SOUTHEAST McDonough, GA
WEST Carlsbad, CA

Turn to ClarkDietrich for a complete lineup of steel construction products and services nationwide:

Interior Framing · Exterior Framing · Interior Finishing · Exterior Finishing · Clips/Connectors · Engineering



9050 Centre Pointe Dr. Suite 400
West Chester, OH 45069

P 513.870.1100
F 513.870.1300

clarkdietrich.com
Clarkwestern Dietrich Building Systems LLC