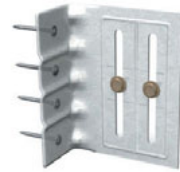




Location Options with (2) Anchors



Location Options with (3) Anchors



(4) Anchors



Location Options with (2) Anchors



Location Options with (3) Anchors



(4) Anchors

3-1/2" FastClip™ ALLOWABLE LOADS (LBS)

Anchor type	Stud thickness and yield strength	No. anchors to structure	Allowable load (lbs)
Buildex #12-24 Tek 5 Self-Drilling Screws to 3/16" Steel	20ga (33mil) 33ksi	2	587
		3	587
		4	587
	18ga (43mil) 33ksi	2	852
		3	852
		4	852
	16ga (54mil) 50ksi	2	852
		3	852
		4	852
	14ga (68mil) 50ksi	2	852
		3	852
		4	852
12ga (97mil) 50ksi	2	852	
	3	852	
	4	852	
PAF to 3/16" Steel*	20ga (33mil) 33ksi	2	511
		3	587
		4	587
	18ga (43mil) 33ksi	2	511
		3	767
		4	852
	16ga (54mil) 50ksi	2	852
		3	852
		4	852
	14ga (68mil) 50ksi	2	852
		3	852
		4	852
12ga (97mil) 50ksi	2	852	
	3	852	
	4	852	

5-1/2" FastClip™ ALLOWABLE LOADS (LBS)

Anchor type	Stud thickness and yield strength	No. anchors to structure	Allowable load (lbs)
Buildex #12-24 Tek 5 Self-Drilling Screws to 3/16" Steel	20ga (33mil) 33ksi	2	689
		3	689
		4	689
	18ga (43mil) 33ksi	2	852
		3	852
		4	852
	16ga (54mil) 50ksi	2	852
		3	852
		4	852
	14ga (68mil) 50ksi	2	852
		3	852
		4	852
12ga (97mil) 50ksi	2	852	
	3	852	
	4	852	
PAF to 3/16" Steel*	20ga (33mil) 33ksi	2	510
		3	689
		4	689
	18ga (43mil) 33ksi	2	510
		3	765
		4	852
	16ga (54mil) 50ksi	2	852
		3	852
		4	852
	14ga (68mil) 50ksi	2	852
		3	852
		4	852
12ga (97mil) 50ksi	2	852	
	3	852	
	4	852	

*See general note #6 on page 9 for the definition of PAF, minimum requirements and other additional information.

Notes:

- 1 The 1/3 stress increase for wind shall not be used.
- 2 Attach building anchors to the structure according to the manufacturer's instructions. Anchors shall be installed through the embossments on the scored line of the clip as shown on the drawings above. In no case shall anchors be installed more than 3/4" from the bend on the short leg of the clip. In cases of discrepancy between this information and the design engineer's details, the design engineer's details shall be followed.
- 3 It is the responsibility of the design professional to detail the project drawings for proper clip installation.
- 4 For connections to concrete, or other technical assistance, contact ClarkDietrich at 888-437-3244.
- 5 Buildex is a registered trademark of Illinois Tool Works, Inc.

