

## FastClip™ Slide Clip (FCSC)

## Curtain Wall/Bypass

## Vertical building movement up to 3"

ClarkDietrich FCSC deflection clips are used to attach exterior curtain wall studs to the building structure and provide for vertical building movement independent of the cold-formed steel framing. A ClarkDietrich FastClip™ deflection clip installs quickly with screws or powder-actuated fasteners, and provides adjustable standoff to ensure a plumb wall plane. FastClip deflection screws are provided with each clip to ensure friction-free sliding. Each clip is also embossed with fastening patterns to ensure accurate placement of fasteners.

## ALTERNATIVE PRODUCTS

Fast Strut™  
QuickClip™  
Slide Clip™

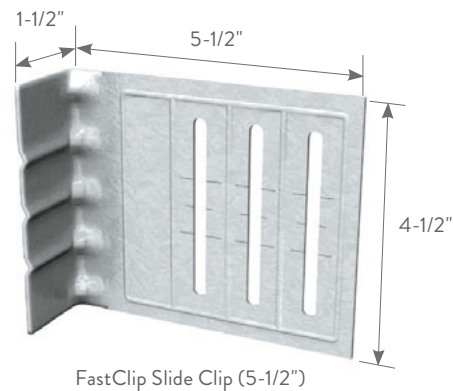
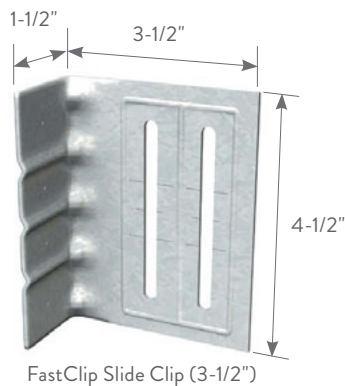
## PRODUCT DIMENSIONS

3-1/2" FastClip: 1-1/2" x 3-1/2" x 4-1/2"

5-1/2" FastClip: 1-1/2" x 5-1/2" x 4-1/2"



FastClip  
Deflection  
Screw



## MATERIAL SPECIFICATIONS

**Gauge:** 14 gauge (68mil)

**Design Thickness:** 0.0713 inches

**Coating:** G90

**Yield Strength:** 50ksi

**ASTM:** A653/A653M

## INSTALLATION

Connections to the building can be made with screws, powder-actuated fasteners or drill-in concrete anchors. Mechanical fasteners shall be located on the embossed marks given on the scored line of the 1-1/2" flange. Two or three FastClip deflection screws (based upon clip size) are used to attach the clip to the cold-formed steel framing. Screws shall be driven through the slotted holes and positioned to allow for the appropriate building deflection.

## FastClip™ SLIDE CLIPS

Product code	Thickness			Size (in)	Packaging Pcs./Carton
	Gauge	Mils	Design thickness (in)		
FCSC	14	68	0.0713	1-1/2 x 3-1/2 x 4-1/2	25
FCSC	14	68	0.0713	1-1/2 x 5-1/2 x 4-1/2	25

3-1/2" FCSC includes 55 FastClip deflection screws per carton.

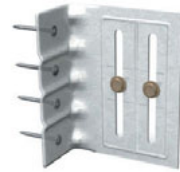
5-1/2" FCSC includes 80 FastClip deflection screws per carton.



Location Options with (2) Anchors



Location Options with (3) Anchors



(4) Anchors



Location Options with (2) Anchors



Location Options with (3) Anchors



(4) Anchors

3-1/2" FastClip™ ALLOWABLE LOADS (LBS)			
Anchor type	Stud thickness and yield strength	No. anchors to structure	Allowable load (lbs)
Buildex #12-24 Tek 5 Self-Drilling Screws to 3/16" Steel	20ga (33mil) 33ksi	2	587
		3	587
		4	587
	18ga (43mil) 33ksi	2	852
		3	852
		4	852
	16ga (54mil) 50ksi	2	852
		3	852
		4	852
	14ga (68mil) 50ksi	2	852
		3	852
		4	852
12ga (97mil) 50ksi	2	852	
	3	852	
	4	852	
PAF to 3/16" Steel*	20ga (33mil) 33ksi	2	511
		3	587
		4	587
	18ga (43mil) 33ksi	2	511
		3	767
		4	852
	16ga (54mil) 50ksi	2	852
		3	852
		4	852
	14ga (68mil) 50ksi	2	852
		3	852
		4	852
12ga (97mil) 50ksi	2	852	
	3	852	
	4	852	

5-1/2" FastClip™ ALLOWABLE LOADS (LBS)			
Anchor type	Stud thickness and yield strength	No. anchors to structure	Allowable load (lbs)
Buildex #12-24 Tek 5 Self-Drilling Screws to 3/16" Steel	20ga (33mil) 33ksi	2	689
		3	689
		4	689
	18ga (43mil) 33ksi	2	852
		3	852
		4	852
	16ga (54mil) 50ksi	2	852
		3	852
		4	852
	14ga (68mil) 50ksi	2	852
		3	852
		4	852
12ga (97mil) 50ksi	2	852	
	3	852	
	4	852	
PAF to 3/16" Steel*	20ga (33mil) 33ksi	2	510
		3	689
		4	689
	18ga (43mil) 33ksi	2	510
		3	765
		4	852
	16ga (54mil) 50ksi	2	852
		3	852
		4	852
	14ga (68mil) 50ksi	2	852
		3	852
		4	852
12ga (97mil) 50ksi	2	852	
	3	852	
	4	852	

\*See general note #6 on page 9 for the definition of PAF, minimum requirements and other additional information.

**Notes:**

- 1 The 1/3 stress increase for wind shall not be used.
- 2 Attach building anchors to the structure according to the manufacturer's instructions. Anchors shall be installed through the embossments on the scored line of the clip as shown on the drawings above. In no case shall anchors be installed more than 3/4" from the bend on the short leg of the clip. In cases of discrepancy between this information and the design engineer's details, the design engineer's details shall be followed.
- 3 It is the responsibility of the design professional to detail the project drawings for proper clip installation.
- 4 For connections to concrete, or other technical assistance, contact ClarkDietrich at 888-437-3244.
- 5 Buildex is a registered trademark of Illinois Tool Works, Inc.

