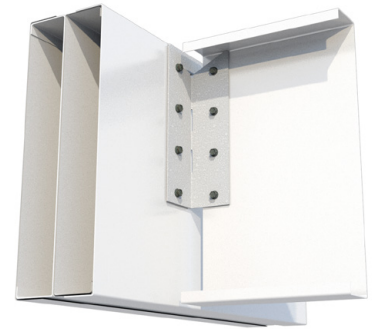


Universal Joist Hanger (UJH-68) 14GA

**INSTALLATION**

**Clip to Joist Attachment:**

- The joist flange must rest on top of the Universal Joist Hanger as shown in the image to the right. Attach the UJH hanger with specified number of #10 or #14 screws as listed in the table below under the Joist column.



**Clip attachment to CFS Header:**

- Attach the UJH hanger to the top and side (face) of the CFS Header with specified number of #10 screws as listed in the table below.

**Clip attachment to Structural/Steel Beam**

- Welded Connection:**  
The minimum required weld to the top flange is 2" fillet weld to each side of top flange.  
Special considerations must be taken when welding galvanized steel.
- PAF (Powder Actuated Fasteners):**  
For powder actuated fasteners attachment (PAF, 0.157"), steel beam shall have minimum 3/16" thickness and minimum yield strength of 36ksi.



**UJH-68 MILS (14GA) Allowable Hanger Loads**

Product code	Joist (Ga)	Header (Ga)	Fasteners			Allowable ASD Loads (lbs)		
			Top	Face	Joist	Uplift	Down	
UJH-68	<b>ATTACHMENT TO CFS HEADER</b>							
	18	16	2 - #10	2 - #10	2 - #10	430	473	
			3 - #10	4 - #10	4 - #10	860	946	
	16	16	2 - #10	2 - #10	2 - #10	797	789	
			3 - #10	4 - #10	4 - #10	1562	1548	
	14	14	2 - #10	2 - #10	2 - #10	852	935	
			3 - #10	4 - #10	4 - #10	1639	1798	
	12	12	2 - #10	2 - #10	2 - #10	906	1035	
			3 - #10	4 - #10	4 - #10	1710	1953	
	<b>ATTACHMENT TO STEEL BEAM<sup>7</sup></b>							
	2" long fillet weld to each side of top flange					2 - #10	132	1035
						4 - #10	263	1285
2 x 0.157" Powder-actuated fastener					2 - #10	167	1035	
					4 - #10	241	1279	
3 x 0.157" Powder-actuated fastener					2 - #10	167	1035	
					4 - #10	241	1279	

**Notes:**

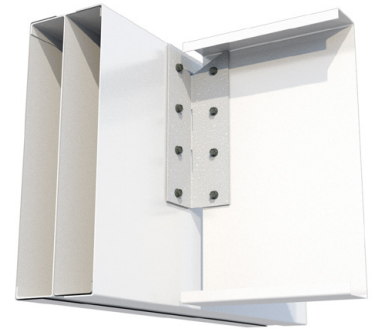
- Screws shall be installed through the pre-drilled holes in the hanger or as detailed by the designer.
- CFS joist shall be laterally braced per designer specification.
- For gaps up to 0.75" between the end of the joist and the face of the hanger, no adjustment factor is required.
- CFS header must be braced to prevent web crippling/buckling per designer specification.
- CFS header must have full bearing of 1-5/8" flange-depth.
- Backing in the steel beam cavity is not required behind the hanger for the load listed.
- Allowable loads to steel beam are based on a minimum of a single 54mil (16ga) CFS joist member.
- The ultimate screw shear strength for #10 screws and #14 screws shall be at least 1644 lbs. and 3048 lbs. respectively.
- The screw shear strength capacities are based of CFSEI Tech Note (F701-12).
- Allowable loads have not been increased for seismic or wind.
- Contact ClarkDietrich Engineering Services for technical assistance.

Universal Joist Hanger (UJH-97) 12GA

**INSTALLATION**

**Clip to Joist Attachment:**

- The joist flange must rest on top of the Universal Joist Hanger as shown in the image to the right. Attach the UJH hanger with specified number of #10 or #14 screws as listed in the table below under the Joist column.



**Clip attachment to CFS Header:**

- Attach the UJH hanger to the top and side (face) of the CFS Header with specified number of #10 screws as listed in the table below.

**Clip attachment to Structural/Steel Beam**

- Welded Connection:**  
The minimum required weld to the top flange is 2" fillet weld to each side of top flange.  
Special considerations must be taken when welding galvanized steel.
- PAF (Powder Actuated Fasteners):**  
For powder actuated fasteners attachment (PAF, 0.157"), steel beam shall have minimum 3/16" thickness and minimum yield strength of 36ksi.



**UJH-97 MILS (12GA)**

**Allowable Hanger Loads**

Product code	Joist (Ga)	Header (Ga)	Fasteners			Allowable ASD Loads (lbs)		
			Top	Face	Joist	Uplift	Down	
UJH-97	<b>ATTACHMENT TO CFS HEADER</b>							
	18	16	2 - #10	2 - #10	2 - #14	439	489	
			3 - #10	4 - #10	4 - #14	860	959	
	16	16	2 - #10	2 - #10	2 - #14	944	940	
			3 - #10	4 - #10	4 - #14	1782	1773	
	14	14	2 - #10	2 - #10	2 - #14	1123	1327	
			3 - #10	4 - #10	4 - #14	2041	2413	
	12	12	2 - #10	2 - #10	2 - #14	1238	1898	
			3 - #10	4 - #10	4 - #14	2135	3273	
	<b>ATTACHMENT TO STEEL BEAM<sup>7</sup></b>							
	2" long fillet weld to each side of top flange					2 - #14	201	1651
						4 - #14	401	1738
2 x 0.157" Powder-actuated fastener					2 - #14	255	1644	
3 x 0.157" Powder-actuated fastener					4 - #14	367	1730	

**Notes:**

- Screws shall be installed through the pre-drilled holes in the hanger or as detailed by the designer.
- CFS joist shall be laterally braced per designer specification.
- For gaps up to 0.75" between the end of the joist and the face of the hanger, no adjustment factor is required.
- CFS header must be braced to prevent web crippling/buckling per designer specification.
- CFS header must have full bearing of 1-5/8" flange-depth.
- Backing in the steel beam cavity is not required behind the hanger for the load listed.
- Allowable loads to steel beam are based on a minimum of a single 54mil (16ga) CFS joist member.
- The ultimate screw shear strength for #10 screws and #14 screws shall be at least 1644 lbs. and 3048 lbs. respectively.
- The screw shear strength capacities are based of CFSEI Tech Note (F701-12).
- Allowable loads have not been increased for seismic or wind.
- Contact ClarkDietrich Engineering Services for technical assistance.