

Drift FastClip™ Slide Clip (D-FCSC)-12GA

Curtain Wall/Bypass with Drift & Vertical Deflection

Vertical and lateral building movement up to 2".

ClarkDietrich Drift FastClip™ Slide Clip 97mils (12ga) is used to attach exterior curtain-wall studs to the building structure and provide for both vertical and lateral movement. FastClip Deflection Screws are provided with each clip for attachment to the wall studs and allow for 2" vertical deflection (1" up and down) to ensure friction-free sliding. Step bushing are provided for the connection to the structure and allow for 2" lateral deflection (1" left and right).

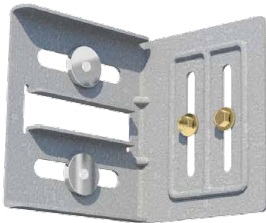


PRODUCT DIMENSIONS

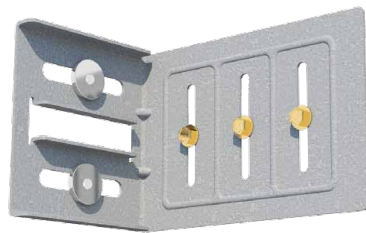
- D-FCSC3.5: 3-3/4" x 4" x 3-1/2" long
- D-FCSC6: 3-3/4" x 4" x 6" long
- D-FCSC8: 3-3/4" x 4" x 8" long

MATERIAL SPECIFICATIONS

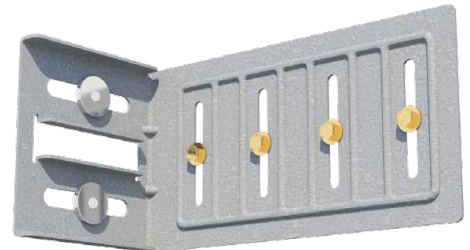
- Gauge: 12 gauge (97mil)
- Design Thickness: 0.1017 inches
- Yield Strength: 50ksi
- Coating: G90
- ASTM: A653/A1003



D-FCSC3.5



D-FCSC6



D-FCSC8

Drift FastClip™ SLIDE CLIPS

Product code	Thickness		Clip Length	No. of Bushings per Clip	No. of Slots & Deflection Screws per Clip
	Gauge	Mils			
D-FCSC3.5	12	97	3-1/2"	2	2
D-FCSC6	12	97	6"	2	3
D-FCSC8	12	97	7-3/4"	2	4

- Packaging:** 25 Clips per Bucket
 D-FCSC3.5 includes (55) FastClip Deflection Screws & (50) Bushings
 D-FCSC6 includes (80) FastClip Deflection Screws & (50) Bushings
 D-FCSC8 includes (110) FastClip Deflection Screws & (50) Bushings



Silver Bushing for 12ga Clips

FastClip Deflection Screws (For Stud Connection)

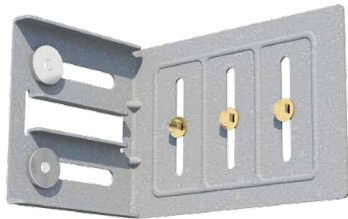
INSTALLATION

To attach the clip to the cold-formed steel framing, two, three or four FastClip deflection screws (based upon clip size), shall be driven through the slotted holes and positioned to allow for the appropriate building deflection.

Attachment to the primary structure can be made with screws, or bolt anchors. Structure attachments shall be driven through the drift bushings and the Drift FastClip™ - centered in the drift slots.



STRUCTURE CENTER CONNECTION¹
Drift Bushings centered in slots



STRUCTURE OFFSET CONNECTION²
Drift Bushings at far end of slots

Drift FastClip™ Slide Clip Allowable Loads				ATTACHED TO MIN. 3/16" STRUCTURAL STEEL WITH (2) 1/4"-20 SCREWS			
Clip Designation	Stud thickness ga (mils)	Fasteners		Tension or Compression Load Capacity			
		to Framing	to Structure	ASD		LRFD	
				Center (lbs) ³	Offset (lbs) ³	Center (lbs) ³	Offset (lbs) ³
D-FCSC3.5 12ga (97mils)	20ga (33mil) 33ksi	(2) #14 FastClip Deflection Screws	(2) 1/4" - 20 with Drift Bushing	488	443	781	709
	18ga (43mil) 33ksi			740	499	1183	798
	16ga (54mil) 50ksi			877	877	1402	1402
	14ga (68mil) 50ksi			877	877	1402	1402
	12ga (97mil) 50ksi			877	877	1402	1402
D-FCSC6 12ga (97mils)	20ga (33mil) 33ksi	(3) #14 FastClip Deflection Screws	(2) 1/4" - 20 with Drift Bushing	777	592	1243	948
	18ga (43mil) 33ksi			934	934	1494	1494
	16ga (54mil) 50ksi			978	967	1564	1548
	14ga (68mil) 50ksi			978	967	1564	1548
	12ga (97mil) 50ksi			978	967	1564	1548
D-FCSC8 12ga (97mils)	18ga (43mil) 33ksi	(4) #14 FastClip Deflection Screws	(2) 1/4" - 20 with Drift Bushing	822	822	1316	1316
	16ga (54mil) 50ksi			845	845	1353	1353
	14ga (68mil) 50ksi			845	845	1353	1353
	12ga (97mil) 50ksi			845	845	1353	1353

Notes:

- 1 ¹ #14 FastClip™ Deflection Screws centered in slots, Drift bushings centered in slots.
- 2 ² #14 FastClip™ Deflection Screws centered in slots, Drift bushings at end of slots.
- 3 Load capacities have not been increased for wind, seismic, or other factors.
- 4 Load Capacities include 1/8" service load limitation.
- 5 Load Capacities calculated considering (2) 1/4"-20 screws for structure connection to 3/16" steel.
- 6 Refer to ICC-ESR-3332 for allowable loads using 1/4"-20 screw fasteners with various plate connection thickness.
- 7 #14 FastClip™ Deflection Screws for framing connection and step bushings for structure connection are provided with D-FCSC clip.

