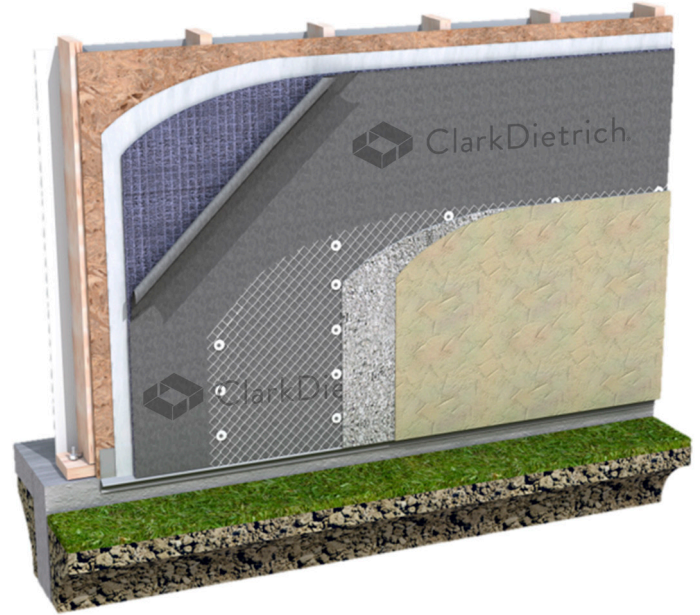


### Installation Instructions – Wood, Vinyl or Fiber Cement Siding

- Apply a weather resistant barrier over sidewall sheathing. Note: some regions may require two layers of weather resistant barrier. Check local codes for more information.
- Install E-Screen after windows and doors have been properly installed and flashed. Starting at the base of the wall, unroll E-Screen from right to left with the fabric flap at the bottom. Place the three dimensional (blue) polymer matrix against the weather resistant barrier and the fabric side facing the exterior of building. Staple or nail every three square feet.
- On the first (bottom) course only, unfold the fabric flap and tuck it between the (blue) polymer matrix and the siding to create an insect screen.
- On subsequent courses, butt the blue polymer material together without overlapping. Make sure to pull the fabric flap over the previous course (shingle style) and staple.
- On the top course, invert the roll and unroll left to right with the fabric flap at the top. Unfold the fabric flap and tuck it between the (blue) matrix and the weather resistant barrier to create an insect screen.
- Install E-Screen under the trim boards or butt it up against the trim board edge using a thicker trim board or a shim to account for thickness of the rain screen material.
- Apply siding over E-Screen using manufacturer's recommended fasteners and spacing.



## Installation Instructions – Stucco and Stone Veneer

- Apply a weather resistant barrier over sidewall sheathing. Note: some regions may require two layers of weather resistant barrier. Check local codes for more information.
- Install E-Screen after windows and doors have been properly installed and flashed. Starting at the base of the wall, unroll E-Screen from right to left with the fabric flap at the bottom. Place the three dimensional (blue) polymer matrix against the weather resistant barrier and the fabric side facing the exterior of building. Staple or nail every three square feet.
- On the first (bottom) course only, unfold the fabric flap and tuck it between the (blue) polymer matrix and the siding to create an insect screen.
- On subsequent courses, butt the blue polymer material together without overlapping. Make sure to pull the fabric flap over the previous course (shingle style) and staple.
- On the top course, invert the roll and unroll left to right with the fabric flap at the top. Unfold the fabric flap and tuck it between the (blue) matrix and the weather resistant barrier to create an insect screen.
- Install E-Screen under the trim boards or butt it up against the trim board edge using a thicker trim board or a shim to account for thickness of the rain screen material.
- Apply siding over E-Screen using manufacturer's recommended fasteners and spacing.