

**ProSTUD 1-5/8" STUD CHASE SOUND ASSEMBLIES****Two parallel rows**

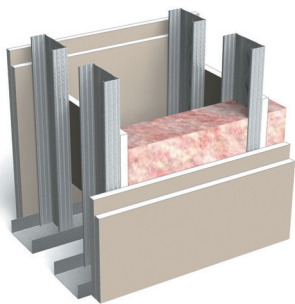
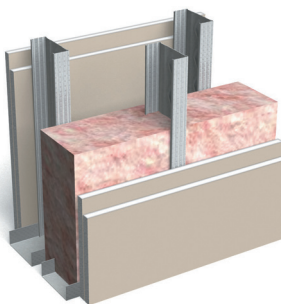
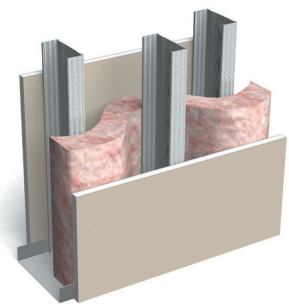
Gypsum type	Side A	Side B	Insulation type	Stud spacing	STC Rating	Test report	Partition type
					ProSTUD 25 (15mil)		
5/8" Type X	1 layer	1 layer	R-13* unfaced	24"	55	TL09-590	1 Similar
5/8" Type X	1 layer	2 layers	R-13* unfaced	24"	59	TL09-591	1 Similar
5/8" Type X	2 layers	2 layers	R-13* unfaced	24"	61	TL09-592	1

**ProSTUD 2-1/2" STUD CHASE SOUND ASSEMBLIES****Staggered in opposite walls**

Gypsum type	Side A	Side B	Insulation type	Stud spacing	STC Rating	Test report	Partition type
					ProSTUD 25 (15mil)		
5/8" Type X	1 layer	1 layer	R-13* unfaced*	24"	58	TL09-593	2 Similar
5/8" Type X	1 layer	2 layers	R-13* unfaced*	24"	63	TL09-594	2 Similar
5/8" Type X	2 layers	2 layers	R-13* unfaced*	24"	65	TL09-595	2

**ProSTUD 3-5/8" STUD CHASE SOUND ASSEMBLIES****Staggered studs in 6" track**

Gypsum type	Side A	Side B	Insulation type	Stud spacing	STC Rating	Test report	Partition type
					ProSTUD 25 (15mil)		
5/8" Type X	1 layer	1 layer	R-13* unfaced	16"	49	TL09-587	3
5/8" Type X	1 layer	2 layers	R-13* unfaced	16"	52	TL09-588	3 Similar
5/8" Type X	2 layers	2 layers	R-13* unfaced	16"	56	TL09-589	3 Similar

Partition  
Type 1Partition  
Type 2Partition  
Type 3**Notes:**

- Sound Assemblies are certified by Western Electro-Acoustic Laboratories.
- NVLAP Accredited for ASTM E90 & E413, ISO Certified.
- See STC test reports at [www.clarkdietrich.com/ProSTUD](http://www.clarkdietrich.com/ProSTUD) for detailed requirements of construction of wall assembly.

\* Values are the same for R-11 insulation.

Contact ClarkDietrich Technical Services at 888-437-3244 for questions about ProSTUD sound assemblies.