

ProSTUD® 3-5/8" SOUND ASSEMBLIES

Partition type	Assembly description	STC Rating / Test Report			
		ProSTUD 25 (15mil)	ProSTUD 20 (19mil)	ProSTUD 30MIL	ProSTUD 33MIL
	3-5/8" ProSTUD @ 24" o.c. 1 layer 5/8" Type X GWB on each side	43 TL09-539	38 TL13-190	36 TL13-204	36 TL13-197
	3-5/8" ProSTUD @ 24" o.c. 3-1/2" R-13* unfaced insulation 1 layer 5/8" Type X GWB on each side	48 TL09-540	41 TL13-189	37 TL13-203	37 TL13-196
	3-5/8" ProSTUD @ 24" o.c. 3-1/2" R-13* unfaced insulation 1 layer 5/8" Type X GWB on one side 2 layers 5/8" Type X GWB on the other side	49 TL13-167	44 TL13-188	40 TL13-202	42 TL13-195
	3-5/8" ProSTUD @ 24" o.c. 3-1/2" R-13* unfaced insulation 2 layers 5/8" Type X GWB on each side	54 TL09-538	45 TL13-187	42 TL13-201	45 TL13-194
	3-5/8" ProSTUD @ 24" o.c. 3-1/2" R-13* unfaced insulation RC-Deluxe w/ 1 layer 5/8" Type X GWB on one side 1 layer 5/8" Type X GWB on the other side	53 TL13-183	48 TL13-191	48 TL13-205	50 TL16-369
	3-5/8" ProSTUD @ 24" o.c. 3-1/2" R-13* unfaced insulation RC-Deluxe w/ 2 layers 5/8" Type X GWB on one side 1 layer 5/8" Type X GWB on the other side	59 TL09-543	54 TL13-192	55 TL16-367	56 TL16-370
	3-5/8" ProSTUD @ 24" o.c. 3-1/2" R-13* unfaced insulation RC-Deluxe w/ 2 layers 5/8" Type X GWB on one side 2 layers 5/8" Type X GWB on the other side	62 TL13-181	59 TL13-193	58 TL16-368	58 TL13-200

Notes:

- Sound Assemblies are certified by Western Electro-Acoustic Laboratories.
- NVLAP Accredited for ASTM E90 & E413, ISO Certified.
- See STC test reports at www.clarkdietrich.com/ProSTUD for detailed requirements of construction of wall assembly.

* Values are the same for R-11 insulation.

Contact ClarkDietrich Technical Services at 888-437-3244 for questions about ProSTUD sound assemblies.

ProSTUD 1-5/8" STUD CHASE SOUND ASSEMBLIES

Two parallel rows

Gypsum type	Side A	Side B	Insulation type	Stud spacing	STC Rating	Test report	Partition type
					ProSTUD 25 (15mil)		
5/8" Type X	1 layer	1 layer	R-13* unfaced	24"	55	TL09-590	1 Similar
5/8" Type X	1 layer	2 layers	R-13* unfaced	24"	59	TL09-591	1 Similar
5/8" Type X	2 layers	2 layers	R-13* unfaced	24"	61	TL09-592	1

ProSTUD 2-1/2" STUD CHASE SOUND ASSEMBLIES

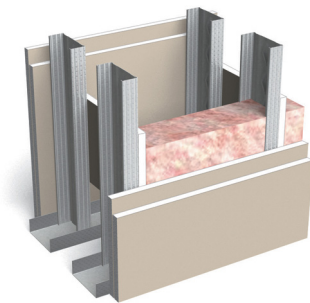
Staggered in opposite walls

Gypsum type	Side A	Side B	Insulation type	Stud spacing	STC Rating	Test report	Partition type
					ProSTUD 25 (15mil)		
5/8" Type X	1 layer	1 layer	R-13* unfaced*	24"	58	TL09-593	2 Similar
5/8" Type X	1 layer	2 layers	R-13* unfaced*	24"	63	TL09-594	2 Similar
5/8" Type X	2 layers	2 layers	R-13* unfaced*	24"	65	TL09-595	2

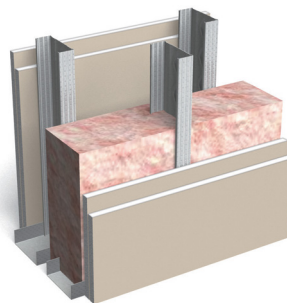
ProSTUD 3-5/8" STUD CHASE SOUND ASSEMBLIES

Staggered studs in 6" track

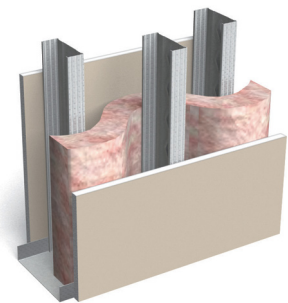
Gypsum type	Side A	Side B	Insulation type	Stud spacing	STC Rating	Test report	Partition type
					ProSTUD 25 (15mil)		
5/8" Type X	1 layer	1 layer	R-13* unfaced	16"	49	TL09-587	3
5/8" Type X	1 layer	2 layers	R-13* unfaced	16"	52	TL09-588	3 Similar
5/8" Type X	2 layers	2 layers	R-13* unfaced	16"	56	TL09-589	3 Similar



Partition Type 1



Partition Type 2



Partition Type 3

Notes:

- Sound Assemblies are certified by Western Electro-Acoustic Laboratories.
- NVLAP Accredited for ASTM E90 & E413, ISO Certified.
- See STC test reports at www.clarkdietrich.com/ProSTUD for detailed requirements of construction of wall assembly.

* Values are the same for R-11 insulation.

Contact ClarkDietrich Technical Services at 888-437-3244 for questions about ProSTUD sound assemblies.