



LISTING INFORMATION OF ClarkDietrich Steel 'H' Stud and 'U' Track Fire-resistance-rated
Area Separation Wall Assemblies

SPEC ID: 26662

ClarkDietrich Building Systems
9100 Centre Pointe Drive, Suite 210
West Chester, OH 45069

This report is for the exclusive use of Intertek's Client and is provided pursuant to the agreement between Intertek and its Client. Intertek's responsibility and liability are limited to the terms and conditions of the agreement. Intertek assumes no liability to any party, other than to the Client in accordance with the agreement, for any loss, expense or damage occasioned by the use of this report. Only the Client is authorized to permit copying or distribution of this report and then only in its entirety. Any use of the Intertek name or one of its marks for the sale or advertisement of the tested material, product or service must first be approved in writing by Intertek. The observations and test results in this report are relevant only to the sample tested. This report by itself does not imply that the material, product, or service is or has ever been under an Intertek certification program.

PRODUCT DESCRIPTION:

'H' Stud, galvanized steel, roll-formed and punched, minimum 2-1/2" deep by 0.019" thick.
 'U' Track, galvanized steel, roll-formed and punched, minimum 2-1/2" deep by 0.019" thick.

SYSTEM DESCRIPTION (unless otherwise noted, fire ratings apply to tests conducted on both sides):

- | Assembly Rating: 2-hours, Non-bearing symmetrical area separation wall, Design weight: 14 psf (refer to Designs CD/WA 120-03).
- | Assembly Rating: 2-hours (with exposure on fire side only). Restricted load bearing non-symmetrical wall tested with gypsum shaftliner under load simulating a wall height of 50 feet. Design weight: 11 psf (refer to Designs CD/WA 120-04).

Designs listed are minimum construction requirements to achieve fire rating.

Evaluated to the following (Unless otherwise noted, the assemblies in this section have been evaluated for conformance to the following standards):

ASTM E119, *Standard Methods of Fire Tests of Building Construction and Materials*
 CAN/ULC S101, *Standard Method of Fire Endurance Tests of Building Construction and Materials*
 NFPA 251, *Fire Test of Building Construction and Materials*
 UL 263, *Fire Tests of Building Construction and Materials*

CERTIFIED FOR USE IN THE FOLLOWING ASSEMBLIES	
Wall Assembly Design Number‡	Corresponding Assembly Listee
CD/WA 120-03	ClarkDietrich Building Systems
CD/WA 120-04	ClarkDietrich Building Systems
CB/WA 120-03†	Continental Building Products
CB/WA 120-04†	Continental Building Products
GP/WA 120-03†	Georgia-Pacific Gypsum
GP/WA 120-04†	Georgia-Pacific Gypsum

‡Designs are based on, and supported by, proprietary test reports. The test reports further define proprietary design details which make these listings applicable only to the specified products manufactured by the listed manufacturer.

†Designs are located in the respective Continental Building Products or Georgia-Pacific-Gypsum Listing Reports

<u>Attribute</u>	<u>Value</u>
Assemblies	Fire Rated Wall Assembly Un-Loaded
Assemblies	Fire Rated Wall Assembly Loaded
Criteria	UL 263 (2003)
Criteria	NFPA 251 (2006)
Criteria	ASTM E119 (2007)
Criteria	ASTM E119 (2008a)
Criteria	UL 263 (2011)
Criteria	ASTM E119 (2012a)
Criteria	ASTM E119 (2015)
CSI Code	09 22 16.13 Non-Structural Metal Stud Framing
CSI Code	09 21 16.33 Gypsum Board Area Separation Wall Assemblies
Fire Resistance	2 Hour Wall Assembly
Intertek Services	Certification
Listed or Inspected	LISTED
Listing Section	ADDITIONAL COMPONENTS FOR WALL ASSEMBLIES
Listing Section	WALL ASSEMBLIES
Report Number	WHI-495-1129, 1130, 1134, 1136, 1167, 1169; WHI-495-1290; R8701, 99NK43912; G102619004
Spec ID	26662
Verification Testing	No

DRAWING INDEX

CD/WA 120-03

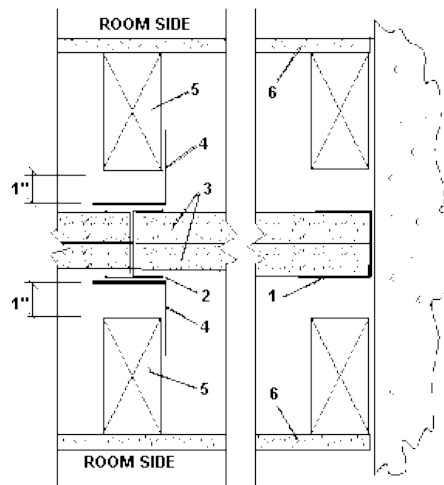
CD/WA 120-04

CD/WA 120-03

Division 09 – Finishes
 09 21 16 Gypsum Board Assemblies
 09 21 16.33 Gypsum Board Area Separation Wall Assemblies

Page 1 of 2

ClarkDietrich™ Building Systems
 Design No. CD/WA 120-03
 Non-Load Bearing Symmetrical Area Separation Wall
 ASTM E119 and CAN/ULC S101
 Fire Resistance Rating: 2 Hour
 Design Weight: 14 psf



1. **FLOOR, UPPER, CORNER AND INTERSECTION RUNNERS***: 'U' shaped runner, 2-1/8 in. deep roll-formed from min. 0.018 in. thick galvanized steel. Position at 1 in. min. spacing from wood framing members on both sides of 'U' runners. Runners attached to foundation or structural members with steel fasteners located not greater than 24 in. on center (oc). Runners are manufactured by ClarkDietrich Building Systems.
2. **STEEL STUDS***: 'H' shaped studs, 1-1/2 in. wide by 2 in. deep, roll-formed from min. 0.018 in. thick galvanized steel. Cut to length 1/2 in. less than the openings height and spaced 24 in. max. oc within runner legs and between two layers of 1 in. thick gypsum shaftliner panels. Studs are manufactured by ClarkDietrich Building Systems.
3. **GYPSUM SHAFTLINER***: 1 in. thick Continental™ Shaftliner Type X* drywall, or Mold Defense® Shaftliner Type X* drywall, or Weather Defense® Platinum Shaftliner Type

X* drywall (complying with ASTM C1396), or 1 in. thick National Gypsum Gold Bond® Fire Shield® Shaftliner (complying with ASTM C1396 for Type X), or USG Sheetrock® Gypsum Liner Panel (complying with ASTM C1396 for Type X), supplied in nominal 24 in. widths. Two panels are inserted against the web of the 'U' runners and into the 2 in. deep recess of the studs.

4. **ALUMINUM CLIPS***: 2 in. long x 2 in. or 2-1/2 in. legs x 0.050 in. thick aluminum angle, spaced 108 in. oc max., vertically, to wood framing with 1-1/4 in. Type 'W' drywall screws and to alternate steel stud flanges staggered between exposed sides with framing screws.
5. **2 in. x 4 in. nominal wood framing**, spaced 16 in. oc max.
6. **GYPSUM BOARD***: 1/2 in. thick Continental Firecheck® proprietary core Type C drywall, or 5/8 in. thick Firecheck® Type X drywall (complying with ASTM C1396), or 1/2 in. thick

Date Revised: July 7, 2016
 Project No. G102619004



Valued Quality. Delivered.

CD/WA 120-03 (page 2 of 2)

Division 09 – Finishes

Page 2 of 2

09 21 16 Gypsum Board Assemblies

09 21 16.33 Gypsum Board Area Separation Wall Assemblies

National Gypsum Gold Bond® Fire Shield® C proprietary core gypsum board, or 5/8 in. thick Fire Shield® gypsum board (complying with ASTM C1396 for Type X), or 1/2 in. thick USG Sheetrock® Firecode® C proprietary core gypsum board, or 5/8 in. thick Sheetrock® Firecode X gypsum board (complying with ASTM C1396), applied horizontally to wood framing on the room side with min. 1-1/4 in. long Type 'W' drywall screws 12 in. oc. Face layer gypsum board joints are finished with paper tape and joint compound (complying with ASTM C475). Exposed screw heads are finished with joint compound (complying with ASTM C475).

Limitations: Gypsum Shaftliner and Gypsum Board must be by same manufacturer. Parapet construction may be required by local code.

*Component bearing the Warnock Hersey Certification Mark

Date Revised: July 7, 2016
Project No. G102619004



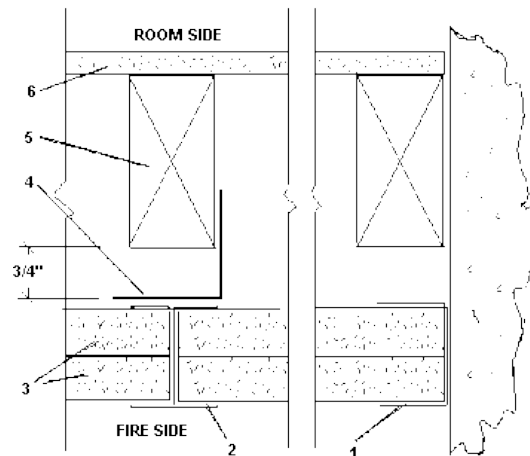
Valued Quality. Delivered.

CD/WA 120-04

Division 09 – Finishes
 09 21 16 Gypsum Board Assemblies
 09 21 16.33 Gypsum Board Area Separation Wall Assemblies

Page 1 of 2

ClarkDietrich™ Building Systems
Design No. CD/WA 120-04
Restricted Load Bearing Non-Symmetrical Area Separation Wall
Tested with Gypsum Shaftliner Under Load Simulating a Wall Height of 50 Feet
ASTM E119 and CAN/ULC S101
Fire Resistance Rating: 2 Hour with Exposure on Fire Side
Design Weight: 11 psf



- 1. FLOOR, UPPER, CORNER AND INTERSECTION RUNNERS*:** 'U' shaped runner, 2-1/8 in. deep roll-formed from min. 0.018 in. thick galvanized steel. Position runners at 3/4 in. min. spacing from wood framing members. Runners attached to foundation or structural members with steel fasteners located not greater than 24 in. on center (oc). Runners are manufactured by ClarkDietrich Building Systems.
- 2. STEEL STUDS*:** 'H' shaped studs, 1-1/2 in. wide x 2 in. deep, roll-formed from min. 0.018 in. thick galvanized steel. Cut to length 1/2 in. less than the openings height and spaced 24 in. max. oc within runner legs and between two layers of 1 in. thick gypsum shaftliner panels. Studs are manufactured by ClarkDietrich Building Systems.
- 3. GYPSUM SHAFTLINER:** 1 in. thick CertainTeed M2Tech Shaftliner Type X gypsum board (complying with ASTM C1396), or 1 in. thick Continental™ Shaftliner Type X* drywall, or Mold Defense® Shaftliner Type X* drywall, or 1 in. Weather Defense®

Platinum Shaftliner Type X* drywall (complying with ASTM C1396), or 1 in. thick National Gypsum Gold Bond® Fire Shield® Shaftliner (complying with ASTM C1396), or USG Sheetrock® Gypsum Liner Panel (complying with ASTM C1396 for Type X), supplied in nominal 24 in. widths. Two panels are inserted against the web of the 'U' runners and into the 2 in. deep recess of the studs.

- 4. ALUMINUM CLIPS:** 2 in. long x 2 in. or 2-1/2 in. legs x 0.050 in. thick aluminum angle, spaced 54 in. oc max. vertically, to wood framing with 4d box nails or 1-1/4 in. drywall screws and to steel stud flanges with framing screws.
- 5.** 2 in. x 4 in. nominal wood framing, spaced 24 in. oc max.
- 6. GYPSUM BOARD:** 1/2 in. thick CertainTeed Type C proprietary core gypsum board, or 5/8 in. thick Type X gypsum board (complying with ASTM C1396), or 1/2 in. thick Continental Firecheck® proprietary core Type

Date Revised: July 7, 2016
 Project No. G102619004



Valued Quality. Delivered.

CD/WA 120-04 (page 2 of 2)

Division 09 – Finishes

Page 2 of 2

09 21 16 Gypsum Board Assemblies

09 21 16.33 Gypsum Board Area Separation Wall Assemblies

C drywall, or 5/8 in. thick Firecheck® Type X drywall (complying with ASTM C1396), or 1/2 in. thick National Gypsum Gold Bond® Fire Shield® C proprietary core gypsum board, or 5/8 in. thick Fire Shield® gypsum board (complying with ASTM C1396 for Type X), or 1/2 in. thick USG Sheetrock® Firecode® C proprietary core gypsum board, or 5/8 in. thick Sheetrock® Firecode X gypsum board (complying with ASTM C1396), applied horizontally to wood framing on the room side with 5d drywall nails 8 in. oc. Face layer gypsum board joints are finished with paper tape and joint compound (complying with ASTM C475). Exposed screw heads are finished with joint compound (complying with ASTM C475).

Limitations: Gypsum Shaftliner and Gypsum Board must be by same manufacturer. Parapet construction may be required by local code.

Allowance: 2 in. thick 'H' stud and Shaftliner Wall provides 120 min. protective membrane rating for framing with 3/4 in. separating.

*Component bearing the Warnock Hersey Certification Mark

Date Revised: July 7, 2016
Project No. G102619004



Valued Quality. Delivered.