

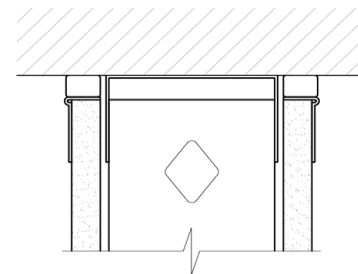
Head-of-Wall Sound Assemblies

with UltraBEAD - Fire, Smoke & Sound

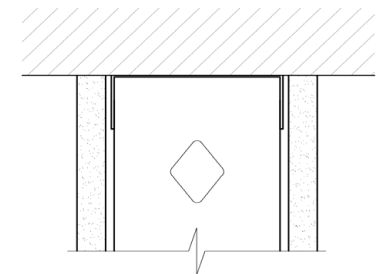
	Stud Framing	Top Track	Joint Filler	Wall Board	Tested STC (w/ Joint)	Baseline STC* (w/o Joint)
Fire, Smoke & Sound	3-5/8" ProSTUD 20 (18mil) @ 24" o.c. - Insulated w/R-13	UltraTRAK (33mil) Slotted Deflection Track with 3/4" Max Joint	UltraBEAD w/ 3/4" Max Joint UL Listing HW-D-0924	(1) Layer 5/8" Type X each side	48 TL21-175	47 TL19-094
				(2) Layers 5/8" Type X each side	52 TL21-172	52 TL19-093
	3-5/8" ProSTUD 20 (18mil) @ 24" o.c. - Insulated w/R-13	ProTRAK® Slip Track (30mil) Deep Leg Deflection Track with 3/4" Max Joint	UltraBEAD w/ 3/4" Max Joint UL Listing HW-D-0924	(1) Layer 5/8" Type X each side	47 TL21-180	47 TL19-094
				(2) Layers 5/8" Type X each side	51 TL21-177	52 TL19-093
Sound Only	3-5/8" ProSTUD 20 (18mil) @ 24" o.c. - Insulated w/R-13	MaxTRAK® SLT (30mil) Slotted Deflection Track with 3/4" Max Joint	UltraBEAD w/ 3/4" Max Joint	(1) Layer 5/8" Type X each side	46 TL21-166	47 TL19-094
				(2) Layers 5/8" Type X each side	51 TL21-169	52 TL19-093

Notes:

- 1 Sound assemblies are certified by Riverbank Acoustical Laboratories™.
 - 2 NVLAP accredited for ASTM E90 & E413, ISO Certified.
 - 3 See STC test report hyperlinks for detailed requirements of construction wall assembly.
- * Baseline STC tested systems comprise of the same wall assembly components as the Tested STC system, but do not contain a head-of-wall joint or slotted track.



Head-of-Wall
w/ Joint



Head-of-Wall
Baseline w/o Joint

Baseline systems
found in [iTools](#)

Contact ClarkDietrich Technical Services at 888-437-3244 for questions about sound assemblies or see: www.clarkdietrich.com/UltraBEAD.