

# VANTAGEPOINT

3

A progressive product in a signature setting.



4

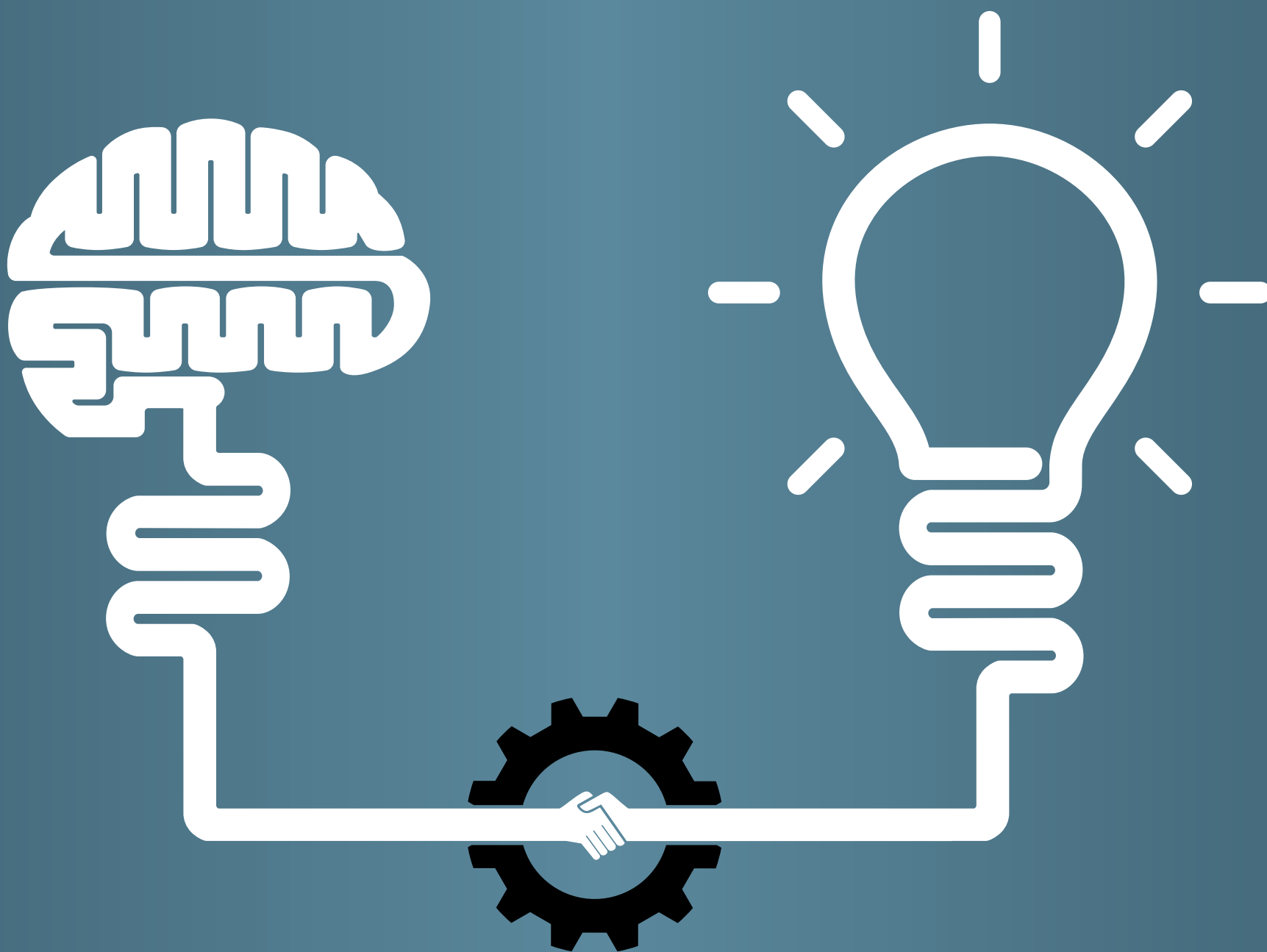
Placing the priority on productivity.

7

ProSTUD® stands up tough in L.A.

12

Ohio plant gets new digs.



## THE INNOVATION ISSUE

Products and perspectives that are moving the industry ahead.



# INNOVATION AND INTEGRITY.

Here's how the leader in steel framing is strengthening the link.

Business mission statements are no rare commodity. But companies who set themselves apart by actually putting their written principles into practice are few and far between. At ClarkDietrich, we are driven to act as an industry leader by a straightforward declaration of purpose and values that begins with these words:

“We strive to distinguish ourselves through a commitment to innovation, integrity and teamwork with our business partners and employees.”

Posted in our offices and manufacturing plants around the nation, the words serve to remind our many team members of what we're all about. The fact that “innovation” is there at the very core can't be overlooked.

**“Innovation is more than a buzzword to ClarkDietrich. It's where we've long taken our stance.”**

**BEYOND WHAT'S NEW**

It's simple to claim innovation. All a company has to do is introduce a widget or way of doing something that's a little new or different. Or worse, use the word as easy jargon to pad their marketing messages. It's little wonder that the concept routinely falls into the trap of being cliché.

Clearly, innovation is more than a buzzword to ClarkDietrich. It's where we've long taken our stance. It's not just a matter of philosophy, but a belief made real by the products, services and manufacturing processes we champion. The following outlook will help you see what innovation means to us—and even begin looking at it from a broader perspective.

**DEFINING IT FOR OURSELVES**

**More than products.** One of the primary ways we act as an innovator in the construction industry is by delivering more to the market than just products.

As proud as we are to be the leading manufacturer of a full portfolio of cold-formed steel framing solutions, connectors, and accessories—that's not enough to be considered innovative.

ClarkDietrich engineers and manufactures individual steel framing components to work together in smarter ways. By taking this systems approach, we provide meaningful installation benefits to contractors and their crew members. We also help bring higher levels of performance to walls, ceilings and entire buildings.

Further, we're a resource for readily available expertise and tools that support professionals. Our nationwide services include engineering, BIM and architectural spec reviews. We've developed robust BIM tools, like ClarkDietrich Wall Type

Creator,™ a free add-on for Revit.® And, our iTools gives architects and specifiers mobile access to a full range of product data and design assistance.

**Heightened character.** Cold-formed steel offers strength, stability and durability in a cost-effective, easy-to-handle material. ClarkDietrich has a history of developing its own ideas into proprietary products, as well as elevating the ideas and products of other innovators. These ideas and products are aimed at plusing the inherent qualities of steel with advantages in labor-savings, building safety and more.

TRAKLOC® Drywall Framing is a prime example. It's a system that dramatically reduces the number of man-hours a crew needs to complete a job. BlazeFrame® also has a great productivity story to it, with the additional power to stop the passage of smoke and flames at the head of a wall. (Find these and other time-saving products highlighted on pgs. 4-5.)

**Advanced processes.** Innovative products are one thing. But when they are the result of progressive practices that introduce greater value and performance into the market, all the better. That was exactly our goal in the launch of ProSTUD® with DiamondPlus® Coating. Through our unique EQ coating process, we are maximizing manufacturing efficiencies, while delivering a product that surpasses the corrosion resistance of standard G40 steel—without additional cost to our customers.

**INNOVATING WITH INTEGRITY**

We realize that innovation isn't always easy. From Galileo, to Newton, to Edison, the new and different has raised alarm and invited competitive resistance. Today, we are more committed than ever to forging a path forward in steel. We have plenty of encouragement in doing so, especially as it relates to DiamondPlus.

In December of 2015, a unanimous Ohio jury awarded ClarkDietrich \$49.5 million in damages after determining that false statements about EQ coatings were published. We are now in the midst of a campaign to correct the misinformation that was intentionally meant to cause confusion in the marketplace. The message? Our EQ coatings provide superior performance at the same price point as traditional framing products, while meeting all requirements of the building code.

Ultimately, this returns us confidently to another concept at the core of our purpose and values statement: integrity. True innovators cannot act without it, and the open sharing of clear, trustworthy information is vital to being known as a credible leader.

Our website, [clarkdietrich.com](http://clarkdietrich.com), holds a wealth of details on our products, systems and services—and it serves as a portal to our many tools as well. To get straight to the facts on EQ coatings, and learn about the rigorous testing we've done, visit [clarkdietrichEQ-IQ.com](http://clarkdietrichEQ-IQ.com)

In the world of steel framing, there are leaders and misleaders. We're making it very clear what path we're on. ●

# A PROGRESSIVE PRODUCT IN A SIGNATURE SETTING.

Philly's up-scale Dalian on the Park rises to new heights with the HDS® Framing System.

For years, ClarkDietrich's Heavy-Duty Stud or HDS® Framing System had been used successfully as a high-performance stud for headers and jambs. Recently however, Panel Systems, Inc., of Woodbridge, Virginia, and ProBuild Gypsum, LLC, of Jessup, Maryland, saw broader potential for the high-capacity stud framing system.

“When ClarkDietrich added punchout capability to their HDS structural studs, it allowed us to smoothly incorporate them into our wall panels, greatly improving their load-bearing capacity compared to standard stud shapes. With that increased load capacity, we could engineer taller, stouter, light gauge steel structures with a lot more confidence,” said Barry Unger, president of Panel Systems, Inc.—a company that engineers, fabricates and installs light gauge framing components for walls, floors and roofs.

Mac McIntosh of building materials supplier ProBuild concurs. Panel Systems, which works closely with Mac's team, is constantly looking to bring innovative approaches to cold-formed steel bearing structures and knew the HDS Framing System could play well into high-rise developments. “Upon our urging, the ClarkDietrich crew invested substantially in equipment and engineering to expand the possibilities for HDS,” McIntosh said.

Unger and his crew got a chance to test their hypothesis when they won the opportunity to design and manufacture prefabricated wall systems for the massive Dalian on the Park development in Philadelphia. The design team for the project had utilized light gauge bearing walls before and were impressed by the time and cost savings they had realized on the project. The development of the new HDS stud weighed heavily in their decision to utilize the same structure for the new nine-story apartment tower. Importantly, the factory-made walls would also drastically minimize traffic disruptions in the bustling neighborhood since the walls would ship ready-made to the construction site. Structural engineers with the Harman Group of King of Prussia, Pennsylvania, vetted the idea and approved the development to proceed with the prefabricated light gauge structural system.

**A TALL ORDER**

Dalian on the Park was built atop the new Rodin Square, a \$160 million mixed-used development that



“It's a fairly tall cold-formed load-bearing job, and ClarkDietrich's heavy-duty studs helped us gain the capacity we needed to meet code,” said Janis Vacca, principal at Harman Group and engineer of record.

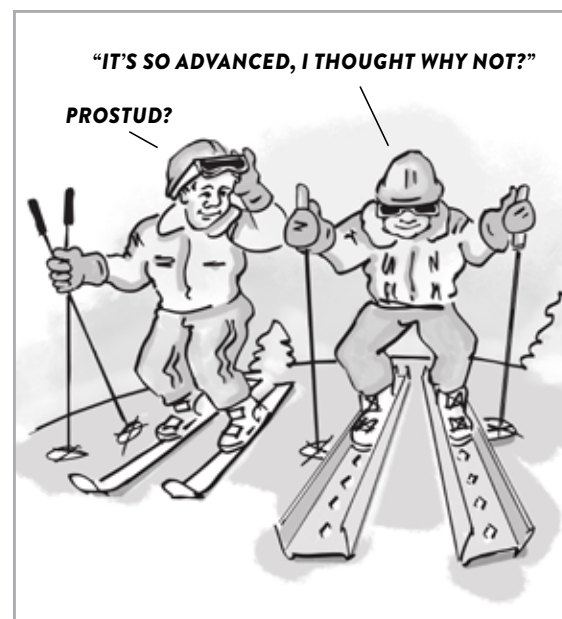
Her team of structural engineers worked closely with Panel Systems to refine the panelized wall design before prefabrication occurred. Much of this involved engineers from Matsen Ford Design Associates of Waukesha, Wisconsin, who tailored the heavy-duty studs to fit the exact design and structural specification for the panelized walls. It was a two-year effort, but one that paid off and one that will likely be repeated on other tall structures built in the future according to all involved.

The wall components provided by ClarkDietrich not only support nine floors of precast concrete plank. They provide the entire lateral bracing system. This approach eliminates the need for reinforced masonry shafts or special structural steel elements.

SEE “SIGNATURE SETTING” ON PAGE 6

## Why save higher performance for your projects?

When you have all the facts on ProSTUD with DiamondPlus Coating, you'll imagine the possibilities.





# PLACING THE PRIORITY ON PRODUCTIVITY.

A showcase of labor-saving solutions.

## STRUCTALATH® WELDED-WIRE PROVIDES A BETTER WAY. ▼

Structalath is a unique welded-wire lath featuring patented flat wires that are welded horizontally to continuous furred vertical wires. Easy-to-handle, it lays down flat and installs faster than conventional expanded metal lath.

## REDHEADER PRO™ RO INSTALLS IN HALF THE TIME VS. BOXED HEADERS. ▼

The RedHeader Pro RO Framing System does the job of delivering high-performance while requiring fewer components.

## BLAZEFRAME® DOES A WHOLE LOT MORE THAN STOP FIRES. ▼

An innovative steel framing system, BlazeFrame is ideal for head-of-wall deflection requirements that also perform as a sound and smoke seal.

## WITH DANBACK®, THE LABOR SAVINGS ARE DRAMATIC. ▼

Danback provides superior connection shear and pullout strength to support and meet even some of the heaviest loading conditions.



## LEAVE SCREWS, LADDERS AND MEASURING BEHIND WITH TRAKLOC.® ▲

ClarkDietrich's revolutionary TRAKLOC Steel Framing System allows the installer to order one length member and adjust accordingly to allow for variances in the slab.

## BACKERBEAD™ GOES ▲ IN FAST TO PROVIDE LONG-TERM PROTECTION.

The innovative BackerBead combines an ASTM-grade PVC casing bead with a closed-cell polyethylene backer rod to provide a continuous termination and consistent gap around openings in the wall.

## REDUCE ▲ INSTALLATION COSTS BY UP TO 40% WITH SPAZZER.®

The Spazzer Spacer Bar—a pre-notched, 16-gauge, galvanized steel spacer and bridging bar—is engineered to facilitate efficient wall construction.

## WALL TYPE CREATOR™ ▲ TOOL—THE FIRST REVIT® ADD-IN DESIGN TOOL MADE SPECIFICALLY FOR COLD-FORMED STEEL FRAMING.

Look up ProSTUD® limiting heights and automatically load in the required families into Revit® and MWF's Pro Software®. This is just one of the many features in the Wall Type Creator Tool.

# SIGNATURE SETTING (CONTINUED FROM PAGE 3)

Moreover, the structural stud walls provide the backup for a significant amount of the interior drywall, saving the time and expense of an independent drywall framing operation.

Unger further explained, “There are tremendous gravity loads on the first level of the residential tower. Many studs have to carry upward of 50,000 pounds. The HDS® studs can take these incredible loads. Normally at that load level, you’d be looking at structural steel, but with the HDS Framing System, you are looking at a light gauge steel member.” All this strength without need for a masonry core.

### GETTING IT DONE

Once the walls were built, they shipped direct to the jobsite where the construction crew methodically erected the stunning z-shaped, nine-story residential

tower one structurally sound wall at a time. It took a total of 36 flatbed trailers and 120 days to complete the 340,000-square-foot wall install, which was right in line with the construction schedule.

Each level of the building was divided into four sections, one trailer of wall panels per section. The panels were lifted off the trailers and set directly in place. Once the panels were completely installed and braced in one section, the precast plank was set while the walls continued to be installed in the next section. This resulted in no downtime between trades.

“I think the panelized walls turned out to be an economical solution for the residential portion of the development. It meets the design parameters of the project and is a good application,” said Vacca.

Truly, it is a clever and cost-effective use of ClarkDietrich’s HDS sections that was made possible thanks to the ingenuity of Panel Systems and ProBuild’s close association with ClarkDietrich.

For years, ClarkDietrich and ProBuild have appreciated the innovative approach that Panel Systems is willing to bring to all project opportunities. The owners can get projects from foundation to roof more quickly and within budget.

“Delivering nine-story buildings using panelized ClarkDietrich HDS framing clearly delivers value in cycle times previously unattainable,” said McIntosh.

Sounds like the ClarkDietrich HDS can help lots of projects achieve a win-win-win end result. ●

A version of this story appears in the March 2015 issue of Walls & Ceilings.

# PROSTUD® STANDS UP TOUGH IN L.A.

**Our advanced drywall framing system is approved yet again by stringent testing.**

In late 2015, the City of Los Angeles Department of Building and Safety certified, in Los Angeles Research Report (LARR 26019), that ClarkDietrich’s ProSTUD® Drywall Framing System (ProSTUD and ProTRAK®) are code-compliant building products and are approved for use in construction in the city. ProSTUD products are recognized and accepted by almost every jurisdiction in the United States.

The LARR requires exceedingly difficult third-party evaluation, against a very stringent list of mechanical, fire and acoustical ASTM standards. The ProSTUD and ProTRAK products certified in the report are cold-formed steel framing members used to construct interior nonload-bearing (nonstructural) gypsum board sheathed walls installed in accordance with the 2014 Los Angeles Building Code.

“Receiving this research report is a significant endorsement from the City of Los Angeles for our ProSTUD and ProTRAK steel framing products,” said Michael Kerner, code development manager for ClarkDietrich Building Systems. “No other drywall framing system has been as thoroughly tested as ProSTUD, and this report serves to highlight our unwavering commitment to provide high-performing products that meet the strict requirements of today’s building codes.”

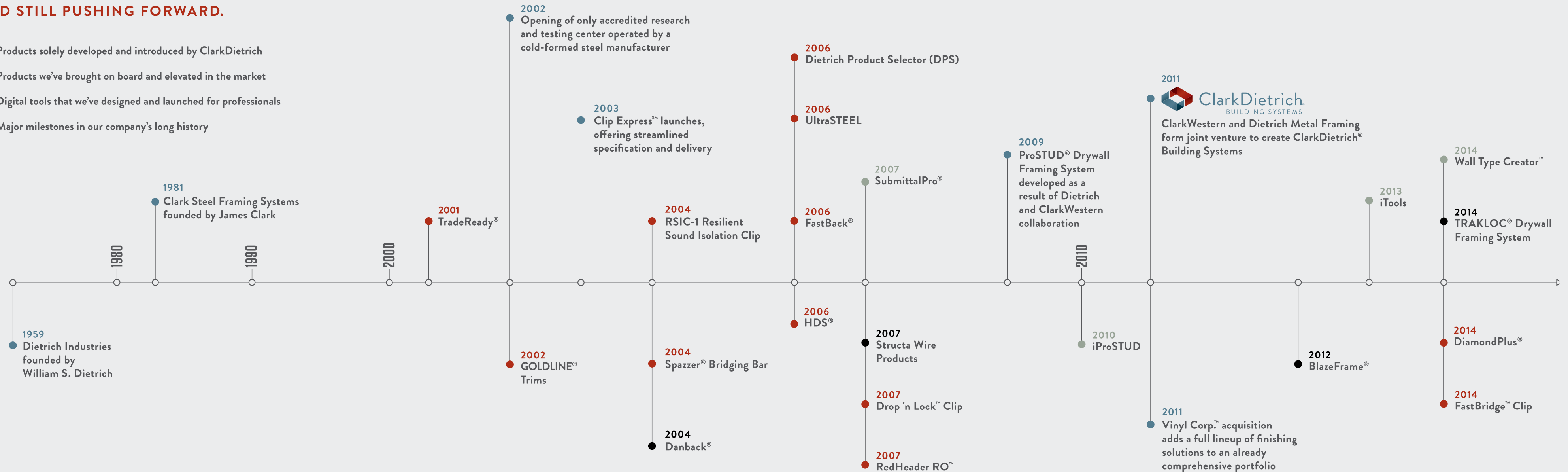
The ProSTUD Drywall Framing System sets the industry benchmark for strength, durability and sound performance.



Its patented design combines high-strength steel with additional stiffening, which results in a remarkably enhanced drywall framing stud. Available nationwide, the system can contribute up to seven LEED® credits under LEED for New Construction and Major Renovations. ●

## YEARS OF PROVEN LEADERSHIP. AND STILL PUSHING FORWARD.

- Products solely developed and introduced by ClarkDietrich
- Products we’ve brought on board and elevated in the market
- Digital tools that we’ve designed and launched for professionals
- Major milestones in our company’s long history





## COLORS THAT STAND OUT BY BLENDING RIGHT IN.

Vinyl Corp.™ delivers ideal accessories for manufactured stone veneer.

The aesthetic value of a perfectly constructed stone feature wall is undeniable. It's usually the focal point of the building, so naturally it's where details matter most. But, if you are taking a close look and cannot see the vinyl accessories, don't worry—it's intentional. Colored vinyl accessories from Vinyl Corp. in tan, brown and gray are the perfect complement to the standard mortar colors found in manufactured stone veneer wall systems. So, it's a good thing you might not notice.

Vinyl trims and accessories have long been known as ideal, highly durable, rust-free options for terminating cementitious materials while also providing multiple options for moisture control in wall systems. What has not been ideal for many applications is that these products are typically only available in one color—white. To solve this issue, Vinyl Corp. has developed colored, UV-resistant, PVC compounds that provide deep, consistent color all the way through its products. This eliminates the need to

paint, touch-up or cover-up in any environments—hot or cold—for the service life of the wall system. And all Vinyl Corp. products are available in colored vinyl.

What's more, if the standard tan, brown and gray-colored vinyl accessories aren't exactly what you are looking for, then Vinyl Corp.'s Custom Color Program may be the right option for the job. Just provide a sample of the color you would like replicated, and you can have a matched vinyl sample back for your approval, in about two weeks.



So now architects, designers and builders can specify color-matched PVC vinyl trims and accessories to fit their color scheme.

Vinyl Corp.'s colored vinyl accessories are produced with high-quality, exterior grade PVC compounds that meet ASTM D1784 and D4216

standards. All colored vinyl accessories are made to Vinyl Corp.'s exacting manufacturing tolerances so that each and every one meets ASTM C1063 and C1780. ●

Vinyl Corp. is a wholly owned subsidiary of ClarkDietrich Building Systems.

## FASTER (AND SMARTER) TO THE FINISH.

Nevada contractor sees major productivity boost with the TRAKLOC® Drywall Framing System.

Think you can't teach old dogs new tricks? Well, sometimes you can. Think you can't finish an interior frame job 25 percent faster than usual? Sometimes you can do that, too. And, on a really good project, sometimes you can do both.

It's true. Cheyne Jackson, an estimator and project manager for Jackson Quality Drywall of Minden, Nevada, did just that on the recent Northern Nevada HOPES community health center construction project in downtown Reno, Nevada. Initially, the three-story job was bid using industry-standard steel stud framing. It would have done just fine; however, Jackson had recently worked with an alternative framing system he thought might work even better for Northern Nevada HOPES. He was spot on.

The system he wanted and ultimately used was ClarkDietrich's TRAKLOC® Drywall Framing System, which is unique in its ability to telescope or adjust in length according to variances in the slab. This means contractors can order one length member for the entire project and easily adjust its size as needed without having to stop, measure and cut each stud. This translates into very real time savings for crews, which ultimately means more profits for the install team. Plus, contractors face none of the safety hazards that come with cutting steel studs—and they don't have to fool with nearly as many screws either.

Everett VanCampen, construction superintendent with The Neenan Company of Fort Collins, Colorado, concurs. This was the first time he had used the system and is pleased with what he saw. "I think it's a good system. I like the way it works," he said.

This was only the second time Jackson had worked with the telescoping studs, and the first time for most of his crew members. He acknowledges there was an initial learning curve.

"Once you get set in a way of doing something, it can be hard to teach a dog new tricks. But you can, even with new technologies and construction practices," Jackson said. Obviously his crew was quick to adjust.

All told, the job required 60,000 linear feet of the telescoping stud system. Between two and three crews of two men installed deflection studs for floors one and two. The first floor was framed in one week and the second floor was done in three weeks on account of the number of small offices in that space. Floor three, which required elevator studs, took a crew of two men two weeks to complete. The teams easily kept up with the other trades on-site.

In the end, Jackson said his crew completed the third-floor install nearly 20 percent faster than originally estimated when the work called for traditional steel studs. The first and second floors were framed an impressive 25 to 30 percent faster.

Jackson says he intends to use TRAKLOC for more jobs on down the line. In fact, he's already eyeing it for the next job he's been awarded. ●



## A FIRSTHAND ACCOUNT OF A LIFE-CHANGING TRIP.

A ClarkDietrich team member shares his story of adopting two remarkable Haitian brothers.

*Soccer Beyond Borders, a spiritual outreach organization, was founded 18 months after the 2010 earthquake that devastated Port-au-Prince, Haiti. The organization came to be after John Keefer and others visited the city on a mission trip. Using soccer as a catalyst for positive change, Keefer saw not only the lives of Haitians change, but the lives within his own family as well. Here is his story:*

The first two years I visited Haiti, I was with a team of mainly young adults. Our goal was to use soccer as a tool to break down language and relational barriers. We were blessed to be able to stay at the New Life 4 Kids Orphanage and Guest House and spend time with the 120 children that lived there. We were also able to travel to several smaller orphanages as well.

The initial meetings always started with an awkward time when all stood and stared at one another. Then we would roll out a soccer ball and the ice was broken. Whether at a small house orphanage or a rocky hillside in a tent city in Cité Soleil—the poorest area in the western hemisphere—we were able to make friends, but more importantly serve others with food, water, clothing, hope and yes, soccer equipment. A "balloon" soccer ball was one of the most sought after items during our travels.

It was at the New Life that my family's life was forever changed. Here our team made many great friends from infants to adults. Every person had a story about how the earthquake changed their lives. Some lost limbs, many lost family and



I met a special young boy named "Louis" or "Guivens" as he went by both. We played soccer, hung out and got to know one another. Guivens knew how to steal the show with his charming personality. While my



friends, and all lost some degree of hope.

daughter wanted to adopt all of the babies and toddlers, I held her at bay. We returned home that first year forever changed, but still as a four-person, one-dog family.

The second year, we were greeted at New Life as old friends and our relationships grew stronger. We served there and at other locations in and around Port-au-Prince. The week passed quickly as our relationships grew stronger. So much so that I felt a calling to investigate adopting Guivens. I returned and discussed the decision with my wife and two daughters and we decided to begin the process in July 2012. As I write, we continue in the process four years later. Oh, and there was another surprise: Guivens had a younger brother James! Of course, we are now adopting the two boys.

Since we first set foot in Haiti, we have seen many lives changed, including those who live in Haiti and those who have gone and served. The soccer outreach continues to grow and expand, as does our relationship with New Life. It is said that life begins at the end of our comfort zone. I say let life begin. ●

## CHRIS SAWLSVILLE: MAINTAINING A THIRST FOR KNOWLEDGE.

ClarkDietrich industrial mechanic heads to college to enhance career.



Experience can be an excellent teacher. Just ask Chris Sawlsville. Like many young people, when he graduated from Rochelle Township High School in 2001, he didn't know what he wanted to do. He landed a job as a laborer at Silgan Manufacturing and then saw his future. "That's where I

first got into industrial maintenance, hanging around the mechanics and asking questions," he said. Over 10 years later, Chris works as an industrial maintenance mechanic at ClarkDietrich Building Systems and has returned to school: he takes classes in the Electronics Program at Kishwaukee College.

Chris is very typical of the students who come to Kishwaukee College in the evening: he is non-traditional (not between 18–24 years old), works full-time during the day, and takes classes to enhance his current employment. "In Industrial Maintenance, you have to wear all the hats—mechanic, electrician, welder, everything," Chris explained. "My duties at ClarkDietrich include

preventative maintenance on all machines, as well as repairs and installing new equipment. I wasn't very strong on the electrical side, so with the support of my plant manager, we decided it would be a good idea for me to take a few classes at Kish."

Chris took ELE 101—Industrial Electricity in fall 2015 and is currently enrolled in ELE 103—AC Electronic Circuits. His class meets on Thursday evenings in the electronics lab on campus with Instructor Charles Raimondi. The class may have a 100-course number, but the students are using calculators and computers to do some challenging work. Chris noted, "I'm a strong believer that the class you take is only as good as the instructor that teaches it. Mr. Raimondi is a very exceptional instructor."

Raimondi has been at Kishwaukee College for a couple of years and has a knack for breaking down the complex world of electronics and electricity to the incredibly useful tool it is. Chris added, "He's not only knowledgeable about what he teaches, but also very good at explaining what you need to know."

Raimondi has worked with enough students that he noticed something in Chris, too. "Last year when I had Chris in my class for the first time, his attitude toward his academics was stellar," he said. "He is constantly active in the class as well as in the labs. Chris is always looking deeper to find the answers and during lab, he lends assistance to his classmates."

What Chris has discovered is the close connection between the classroom and his position as an industrial maintenance mechanic. He explained, "All of this is making me more knowledgeable and adding to my skill set in the workforce. But, what makes this even better, is that I'm using what I learn almost immediately at work." Raimondi is not surprised. "Chris is not the type of person who is going to sit around. He is going to make opportunities come to him. He is a leader, setting a higher example for his coworkers as well as for the students in the class."

Chris is already looking ahead. He will be taking ELE 211—Automatic and HVAC Motor Controls in the fall semester. "As long as there's something more to learn and a good instructor willing to teach, I'll be here ready to learn and hopefully excel at my job as a result of it." ●



# REDHEADER PRO™ WILL PUT YOU IN THE BLACK.

## Product redesign and labor-saving features elevate Rough Openings Systems.

When it comes to the jobsite, saving time is saving money. RedHeader RO™ from ClarkDietrich has long been synonymous with jobsite efficiency, as the system replaces traditional built-up or “boxed” headers with single members that allow for quick framing around nonload-bearing doors or windows. With RedHeader RO, contractors across the country said goodbye to additional studs, tracks and screws, and hello to fast and easy installation with pieces pre-cut to specified lengths. ClarkDietrich’s innovation didn’t just stop there, however.



Earlier this year, ClarkDietrich launched the next generation of its RedHeader system—RedHeader Pro™ RO. This new system replaces its predecessor and provides even more versatility for walls and ceilings contractors. Most notably, RedHeader Pro now uses the same-sized member for the jamb and header. This allows for even greater functionality, while still reducing the amount of material by up to 50 percent. As with the original system, RedHeader Pro also eliminates “capped” members, which allows fasteners to drive through only a single thickness of steel.

Contractors will also notice that the top of the header is open and the header and jamb assembly are flush.

This design allows for easy install of the insulation while virtually eliminating the need to pre-insulate headers prior to installation.

At ClarkDietrich, continuous improvement is a byproduct of sustainable thinking at every level of the company—from manufacturing processes to product design. The enhanced sustainability features of RedHeader Pro include a more adaptable size, as well as the elimination of the system’s namesake red paint. While the red paint was a great product identification

feature, the energy used to achieve it was not within our ongoing efforts to reduce the environmental impact in all aspects of our business.

Additionally, the new HDSC header clip uses less steel than the original blue Drop ‘N Lock™ Clip. The combination of a more economical shape and the elimination of the painting process is also in keeping with our green initiative.

Like all ClarkDietrich Building Systems’ steel framing products, RedHeader Pro has a published Environmental Product Declaration (EPD) and a Health Product Declaration (HPD). ●

### ➤ Full-sized web members match up dimensionally with traditional studs.

- Same member can be used for jamb and header conditions. More versatile! Less concern over “leftover” materials.

### ➤ Like the original offering:

- Eliminates built-up header and jamb assemblies.
- Reduces material and screws by up to 50%.
- Eliminates “capped” members, allowing drywall screws to drive through only a single thickness of material.

### ➤ Non-painted members use less energy in the manufacturing process: more “green.”

- More economical alternative from a cost standpoint.

### ➤ RedHeader Pro will be more readily available—quicker service and delivery times to the market.

- Manufactured at more CDBS plants to meet tight jobsite demands.

### ➤ New clip and connectors with Pro:

- HDSC header clip
  - More economical than prior clips (Drop ‘N Lock).
  - Easy installation—header “slides” in, no screw buildup. Header and jamb assembly are “flush.”
- Cripple stud clips
  - Eliminate track in cripple conditions. More economical alternative.
  - Top of header is open with clips being used instead of track, allows for easy install of the insulation. No need to “pre-insulate” headers prior to installation.



## ON POINT WITH ADAM SHOEMAKER.

ClarkDietrich’s code development manager discusses his perspective on steel and sustainability.

### Q. CAN YOU TELL US ABOUT YOUR ROLE AS CODE DEVELOPMENT MANAGER AT CLARKDIETRICH?

**A.** In the context of sustainability, my role as code development manager is to understand and manage the interactive relationships between building codes, manufacturing codes and green building programs as they relate to ClarkDietrich Building Systems’ product lines.

### Q. CLARKDIETRICH RECENTLY MADE HEADLINES BY BECOMING THE FIRST COLD-FORMED STEEL MANUFACTURER TO ISSUE EPDs AND HPDs. WHY WAS THIS IMPORTANT?

**A.** The most recent version of LEED® v4 had some fairly major revisions, two of which I will highlight here. The first is a new credit for an Integrative Process, which aims to bring project team members together earlier in the design process. This helps to identify synergies among systems and components. The Materials and Resources credit category also received an overhaul with three mainly new credits focusing on transparency. These include Building Product Disclosure and Optimization—Environmental Product Declarations (EPDs); Building Product Disclosure and Optimization—Sourcing of Raw Materials; and Building Product Disclosure and Optimization—Material Ingredients. EPDs can contribute up to two points under the Environmental Product Declaration credit and Health Product Declarations (HPDs) contribute toward one point under

the Material Ingredients credit. When architects and others from our customer base discussed with us these anticipated changes to LEED, they asked if we would be providing the noted resources. As we see ourselves as part of the Integrative Process team, we made a strong push to be the first in our industry to publish these resources for our customers.

### Q. CAN YOU HIGHLIGHT ANY OTHER SUSTAINABLE INITIATIVES CLARKDIETRICH EMBARKS ON FROM A CORPORATE LEVEL?

**A.** ClarkDietrich is an active member of the U.S. Green Building Council with LEED-accredited professionals on staff. We are committed to supplying quality products and are always looking for new ways to develop greener building products and sustainable business practices. For instance, product development hones in on ease of installation and optimal use of material in an effort to assure waste is kept to a minimum. Further, we actively pursue packaging methods that reduce waste and promote recycling. We also recycle 100 percent of waste generated by our steel plants and use VOC-free rolling lubricants in our facilities in an effort to improve indoor air quality and the health of our employees. Similarly, we have upgraded lighting at our facilities to reduce energy consumption.

### Q. SUSTAINABLE AND GREEN BUILDING ARE AT THE FOREFRONT IN THE DESIGN AND CONSTRUCTION OF NEW BUILDINGS. HOW HAS CLARKDIETRICH RESPONDED TO THIS SHIFT?

**A.** ClarkDietrich recognizes that humans are currently using 18 months of Earth’s renewable resources in only 12 months. We believe that because steel can be recycled an infinite number of times with no downcycling, it is a great answer for sustainability. Wood, on the other hand, can only be recycled a handful of times before it becomes waste and must be disposed of. Further, construction and demolition waste account for approximately 40 percent of the total solid waste stream in the United States, and with a combination of recyclable and cut-to-length materials, we can help drastically reduce the overall waste coming from construction sites. On top of the benefits of steel, we have people on staff dedicated to understanding green building programs like LEED. Keith Johnson is a LEED AP BD+C, I recently became one, and we have a handful of other people who are LEED Green Associates. So as a company, we are dedicated to making sure we are educated and up-to-date on these programs.

### Q. AS IT RELATES TO STEEL FRAMING, ARE THERE ANY GAME-CHANGING INNOVATIONS THAT WILL SHAPE THE INDUSTRY GOING FORWARD?

**A.** I think the economic downturn was a testament to our commitment to development. Despite an extremely poor market, we continued to work full-time at our Research and Development Facility on innovative products including our DiamondPlus® Coating, and have more innovations in the queue. ●



# OHIO PLANT GETS NEW DIGS.

## Short Move from Warren to Vienna Boosts ClarkDietrich's Ability to Scale Business.

Last August, ClarkDietrich began the process of relocating one of its long-standing Warren, Ohio, production facilities to a new 362,649-square-foot facility in Vienna, Ohio. While only a short car drive apart, the new plant affords ClarkDietrich the ability to scale manufacturing capacity based on customer demand.

**“We strive to be the partner of choice for the building community.”**

According to Bill Courtney, president and CEO of ClarkDietrich Building Systems, this transition aligns with

the company's long-term growth strategy and will ultimately allow more flexibility, increased product availability and improved service to customers. As part of the transition,

ClarkDietrich plans to increase its 100-plus employee base. Active recruitment for open positions is currently underway.

“We are excited to announce our move to a new and larger facility to support the anticipated future growth of our expanding product lines and warehousing needs,” said Courtney. “We strive to be the partner of choice for the building community for its steel framing needs. This move underscores our vision to continually strive to better serve the needs of our customers and employees.”

Existing customers will not be impacted during the relocation process. As ClarkDietrich transitions production from Warren to Vienna, its customers will receive the same superior service they have come to expect from ClarkDietrich.

The transition is expected to be completed by early 2017. ●



**IT ALL MAKES PERFECT SENSE.**



**THE MORE YOU KNOW ABOUT EQ COATINGS, THE LESS CONFUSION YOU SEE.**

From the facts on full code compliance, to extensive testing data, to details that can build your knowledge of advanced products, we're sharing a lot. Today, ClarkDietrich is as committed as ever to innovation in cold-formed steel framing. And to clearing up confusion in the market on the performance advantages of EQ coatings. Learn why you can confidently install ProSTUD® with DiamondPlus® Coating at [ClarkDietrichEQ-IQ.com](http://ClarkDietrichEQ-IQ.com)

