

Material list content from:

**TEST REPORT FOR CLARKDIETRICH BUILDING SYSTEMS, LLC**

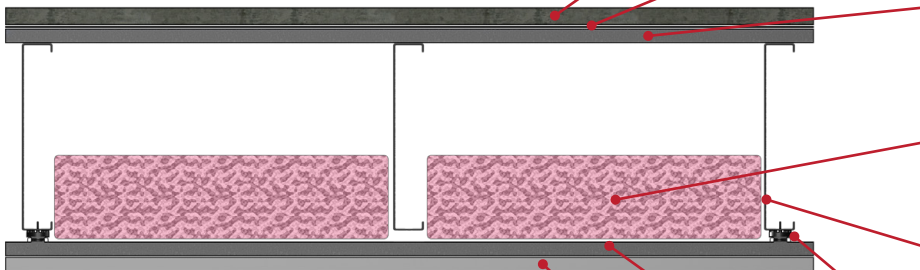
Report No.: J4775.01-113-11-R1

Date: 05/20/19

(See complete report for all assembly details)

**SECTION 9**

**TEST SPECIMEN DESCRIPTION**



| MATERIAL                       | Dimensions (mm/inch)   | Thickness (mm/inch) | MANUFACTURER AND SERIES                      | QUANTITY                                       | AVERAGE WEIGHT                                    |
|--------------------------------|--|---------------------|--|--|---|
| Floor Underlayment             | 3023 by 3632<br>119 by 143   | 25.4 / 1            | USG Levelrock® Brand<br>CSD® Early Exposure™ | 10.98 m <sup>2</sup><br>118.19 ft <sup>2</sup> | 45.89 kg/m <sup>2</sup><br>9.4 lb/ft <sup>2</sup> |
|                                | Note: Poured directly onto the subfloor underlayment, cured a minimum of 14 days. The gypsum panel had a closed cell foam perimeter isolation. No noticeable shrinkage or cracking was visible on the specimen.    |                     |  |  |   |
| Sound Attenuation Mat          | 3023 by 1003.3<br>119 by 39.5  | 6.4 / 0.25          | USG Levelrock® Brand SAM-<br>N25™            | 10.98 m <sup>2</sup><br>118.19 ft <sup>2</sup> | 0.49 kg/m <sup>2</sup><br>0.1 lb/ft <sup>2</sup>  |
|                                | Note: Loose laid with seams overlapping and taped  |                     |  |  |   |
| Steel Floor Deck               | 3023 by 914.4<br>119 by 36   | 14.6 / 0.57         | 22-Gauge Corrugated                          | 10.98 m <sup>2</sup><br>118.19 ft <sup>2</sup> | 6.7 kg/m <sup>2</sup><br>1.37 lb/ft <sup>2</sup>  |
|                                | Note: Installed in a test frame flush to the source room. Flutes filled with FIRM-FILL® CSD. The depth of the deck flutes was 14.3 mm (9/16") and the measured thickness of the metal was 0.7 mm (0.03").          |                     |  |  |   |
| Fiberglass Insulation          | 520.7 by 3023<br>20.5 by 119   | 88.9 / 3.5          | Johns Manville Unfaced R-<br>13              | 10.98 m <sup>2</sup><br>118.19 ft <sup>2</sup> | 1.32 kg/m <sup>2</sup><br>0.27 lb/ft <sup>2</sup> |
|                                | Note: Installed into the cavities between the joists, draped across furring/hat Channel.   |                     |  |  |   |
| Steel Joist                    | 3023 by 3632<br>119 by 143   | 254 / 10            | ClarkDietrich TradeReady®                    | 21.16 lin m<br>69.42 lin ft                    | 4.78 kg/m<br>3.21 lb/ft                           |
|                                | Note: Installed on 610 mm (24") centers using Trade Ready® rim track.  |                     |  |  |   |
| Resilient Sound Isolation Clip | 76.2 by 36.5<br>3 by 1.4   | 31.8 / 1.25         | ClarkDietrich® Sound Clip                    | 24 clips                                       | 0.06 kg/clip<br>0.14 lb/clip                      |
|                                | Note: Installed in a 610 mm by 1219 mm (24" by 48") grid pattern.  |                     |  |  |   |
| Furring/Hat Channel            | 3657.6 by 76.2<br>144 by 3   | 22.3 / 0.88         | ClarkDietrich® 087F125-18                    | 21.95 lin m<br>72 lin ft                       | 0.48 kg/m<br>0.32 lb/ft                           |
|                                | Note: Installed on 610 mm (24") centers perpendicular to the joists. The measured thickness of the metal was 0.7 mm (0.03").   |                     |  |  |   |
| Gypsum Panel                   | 1219 by 3023<br>48 by 119  | 15.9 / 0.63         | USG SHEETROCK® Brand<br>FIRECODE® C Core     | 10.98 m <sup>2</sup><br>118.19 ft <sup>2</sup> | 11.9 kg/m <sup>2</sup><br>2.44 lb/ft <sup>2</sup> |
|                                | Note: Fastened to the channels on 203 mm (8") centers with 25.4 mm (1") Type S bugle head screws. The seams of the gypsum panels were sealed with Pecora AC-20 FTR caulk and covered with pressure sensitive tape. |                     |  |  |   |