

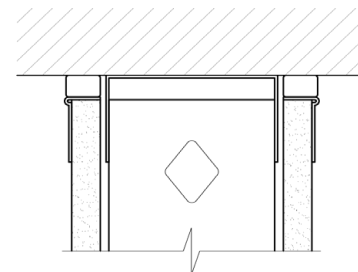
Head-of-Wall Sound Assemblies

with BlazeFrame® Perimeter L-Bead (Fire, Smoke & Sound)

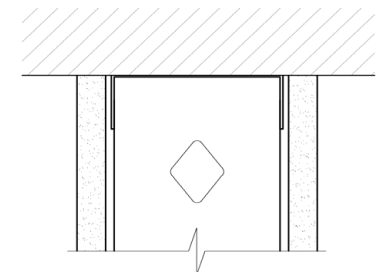
Stud Framing	Top Track	Joint Filler	Wall Board	Tested STC (w/ Joint)	Baseline STC* (w/o Joint)
3-5/8" ProSTUD 20 (18mil) @ 24" o.c. - Insulated w/R-13	BlazeFrame® DSLW 2 (33mil) Slotted Deflection Track with 1" Max Joint	BlazeFrame® Perimeter L-Bead w/ 1" Max Joint	(1) Layer 5/8" Type X each side	47 TL19-390	47 TL19-094
			(2) Layers 5/8" Type X each side	52 TL19-388	52 TL19-093
3-5/8" ProSTUD 20 (18mil) @ 24" o.c. - Insulated w/R-13	ProTRAK® Slip Track (30mil) Deep Leg Deflection Track with 1" Max Joint	BlazeFrame® Perimeter L-Bead w/ 1" Max Joint	(1) Layer 5/8" Type X each side	48 TL19-395	47 TL19-094
			(2) Layers 5/8" Type X each side	52 TL19-392	52 TL19-093
3-5/8" ProSTUD 20 (18mil) @ 24" o.c. - Insulated w/R-13	MaxTRAK® SLT (30mil) Slotted Deflection Track with 1" Max Joint	BlazeFrame® Perimeter L-Bead w/ 1" Max Joint	(1) Layer 5/8" Type X each side	46 TL19-382	47 TL19-094
			(2) Layers 5/8" Type X each side	50 TL19-385	52 TL19-093

Notes:

- 1 Sound assemblies are certified by Riverbank Acoustical Laboratories™.
 - 2 NVLAP accredited for ASTM E90 & E413, ISO Certified.
 - 3 See STC test report hyperlinks for detailed requirements of construction wall assembly.
- * Baseline STC tested systems comprise of the same wall assembly components as the Tested STC system, but do not contain a head-of-wall joint or slotted track.



Head-of-Wall
w/ Joint



Head-of-Wall
Baseline w/o Joint

Baseline systems
found in [iTools](#)

Contact ClarkDietrich Technical Services at 888-437-3244 for questions about sound assemblies or see: www.clarkdietrich.com/BlazeFrame.