

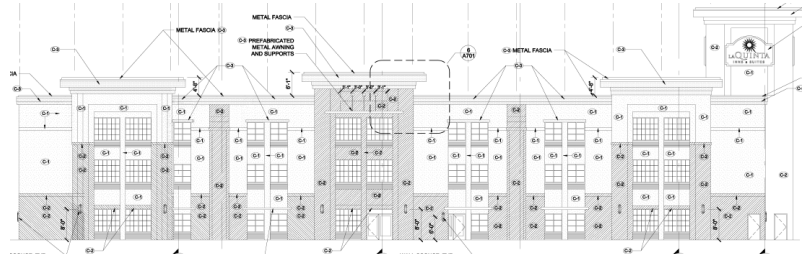
# TIME & MATERIAL STUDY

## Structalath Twin Trac vs. 2.5 Diamond Lath

Time and Material analysis was calculated utilizing **On Center Quick Bid** software and compares man hours and materials required to complete projects with Diamond Lath and Structa Twin Trac as follows:

### Commercial

**Hotel Complex - Uvalde, TX**  
Metal Stud @ 24" OC over gypsum sheathing



2.5 Diamond Lath	Time	Structa Twin Trac	Time
1547 sheets (27,846 sq. ft).	532 hrs	54 rolls 25,758 sq. ft.	434 hrs

**Twin Trac Material Savings: 8%**

**Twin Trac Labor Savings: 22%**

### Residential

**2 Storey Custom Home - San Antonio, TX**  
Wood Frame @ 16" OC



2.5 Diamond Lath	Time	Structa Twin Trac	Time
374 sheets (6,732 sq. ft.)	135 hrs	13 rolls 5850 sq. ft	106 hrs

**Twin Trac Material Savings: 9%**

**Twin Trac Labor Savings: 30%**

### Structa Twin Trac Designed to Improve Efficiencies

#### Labor Savings

- Less Handling – 1 roll= 25 sheets ML
- Simple Fastening at twin tracs
- Longer Lengths - at 150 ft.
- Wider Widths – at 38 3/8"
- No Wire Tying Required

#### Material Savings

- Less Vertical Overlaps  
*Twin Trac not limited to 96" lengths*
- Less Horizontal Overlaps  
*Due to 38" widths*
- Less Waste  
*Twin Trac can be custom cut to fit framing*