

FastClip™ Slide Clip

Curtain Wall/Bypass

Vertical building movement up to 3"

ClarkDietrich FCSC deflection clips are used to attach exterior curtain wall studs to the building structure and provide for vertical building movement independent of the cold-formed steel framing. A ClarkDietrich FastClip™ deflection clip installs quickly with screws or powder-actuated fasteners, and provides adjustable standoff to ensure a plumb wall plane. Proprietary Deflection Screws are provided with each clip to ensure friction-free sliding. Each clip is also embossed with fastening patterns to ensure accurate placement of fasteners.

MATERIAL SPECIFICATIONS

Gauge: 14 gauge (68mils)

Design Thickness: 0.0713 inches

Gauge: 12 gauge (97mils)

Design Thickness: 0.1017 inches

Coating: G90

Yield Strength: 50ksi

ASTM: A653/A653M

PRODUCT DIMENSIONS

3-1/2" FastClip: 1-1/2" x 3-1/2" x 4-1/2"

5-1/2" FastClip: 1-1/2" x 5-1/2" x 4-1/2"

ALTERNATIVE PRODUCTS

Fast Strut™

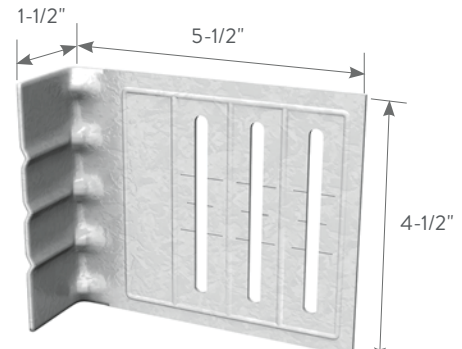
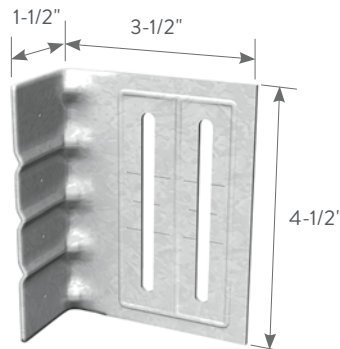
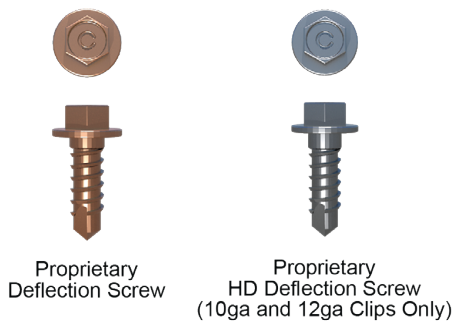
Flat Tail™

FastClip™ HD

Universal Bypass Clip

INSTALLATION

Connections to the building can be made with screws, powder-actuated fasteners or drill-in concrete anchors. Mechanical fasteners shall be located on the embossed marks given on the scored line of the 1-1/2" flange. Two or three Proprietary Deflection Screws (based upon clip size) are used to attach the clip to the cold-formed steel framing. Screws shall be driven through the slotted holes and positioned to allow for the appropriate building deflection.



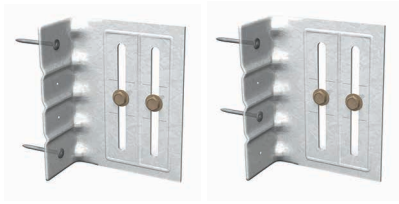
FastClip™ Slide Clips (FCSC)

Product Code	Product Thickness		Size (in)	Packaging Pcs./Carton
	Mils (Gauge)	Design Thickness (in)		
FCSC3.5-68	68mils (14ga)	0.0713	1-1/2 x 3-1/2 x 4-1/2	25
FCSC5.5-68	68mils (14ga)	0.0713	1-1/2 x 5-1/2 x 4-1/2	25
FCSC5.5-97	97mils (12ga)	0.1017	1-1/2 x 5-1/2 x 4-1/2	25

3-1/2" FCSC includes 55 Proprietary Deflection Screws per carton.

5-1/2" FCSC includes 80 Proprietary Deflection Screws for 14ga clip and 80 Proprietary HD Deflection Screw for 12ga clip per carton.

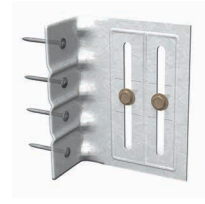
Intertek CCRR-0208
U.S. Patent No. 6,688,069



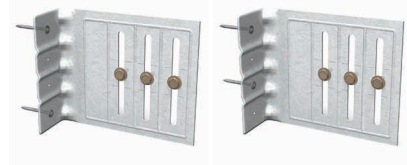
Location Options with (2) Anchors



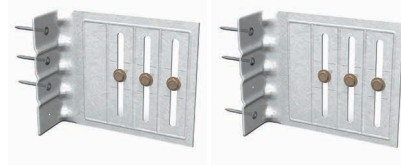
Location Options with (3) Anchors



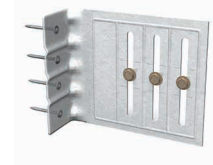
(4) Anchors



Location Options with (2) Anchors



Location Options with (3) Anchors



(4) Anchors

3-1/2" FastClip™ Allowable Loads (lbs)

Anchor Type	Stud Thickness / Yield Strength	No. Anchors to Structure	Allowable Load (lbs)
Buildex #12-24 Tek 5 Self-Drilling Screws to 3/16" Steel	33mils (20ga) 33ksi	2	425
		3	425
		4	425
	43mils (18ga) 33ksi	2	852
		3	852
		4	852
	54mils (16ga) 50ksi	2	852
		3	852
		4	852
	68mils (14ga) 50ksi	2	852
		3	852
		4	852
97mils (12ga) 50ksi	2	852	
	3	852	
	4	852	
PAF to 3/16" Steel*	20ga (33mils) 33ksi	2	511
		3	587
		4	587
	43mils (18ga) 33ksi	2	511
		3	767
		4	852
	54mils (16ga) 50ksi	2	852
		3	852
		4	852
	68mils (14ga) 50ksi	2	852
		3	852
		4	852
97mils (12ga) 50ksi	2	852	
	3	852	
	4	852	

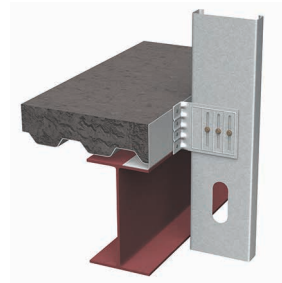
5-1/2" FastClip™ Allowable Loads (lbs)

Anchor Type	Stud Thickness / Yield Strength	No. Anchors to Structure	Allowable Load (lbs)
Buildex #12-24 Tek 5 Self-Drilling Screws to 3/16" Steel	33mils (20ga) 33ksi	2	689
		3	689
		4	689
	43mils (18ga) 33ksi	2	852
		3	852
		4	852
	54mils (16ga) 50ksi	2	852
		3	852
		4	852
	68mils (14ga) 50ksi	2	852
		3	852
		4	852
97mils (12ga) 50ksi	2	852	
	3	852	
	4	852	
PAF to 3/16" Steel*	33mils (20ga) 33ksi	2	510
		3	689
		4	689
	43mils (18ga) 33ksi	2	510
		3	765
		4	852
	54mils (16ga) 50ksi	2	852
		3	852
		4	852
	68mils (14ga) 50ksi	2	852
		3	852
		4	852
97mils (12ga) 50ksi	2	852	
	3	852	
	4	852	

*See General Note #6 on page 7 for the definition of PAF, minimum requirements and other additional information.

Notes:

- 1 The 1/3 stress increase for wind shall not be used.
- 2 Attach building anchors to the structure according to the manufacturer's instructions. Anchors shall be installed through the embossments on the scored line of the clip as shown on the drawings above. In no case shall anchors be installed more than 3/4" from the bend on the short leg of the clip. In cases of discrepancy between this information and the design engineer's details, the design engineer's details shall be followed.
- 3 It is the responsibility of the design professional to detail the project drawings for proper clip installation.
- 4 For connections to concrete, or other technical assistance, contact ClarkDietrich at 888-437-3244.
- 5 Buildex is a registered trademark of Illinois Tool Works, Inc.



5-1/2" FastClip™ Slide Clip

Curtain Wall/Bypass

5-1/2" 12ga FastClip™ (FCSC) Allowable Loads (lbs)

Anchor Type	Stud Thickness / Yield Strength	No. Anchors to Structure	Allowable Load* (lbs)	Allowable Load# (lbs)
Buildex #12-24 Self-Drilling Screws to 3/16" Steel	33mils (20ga) 33ksi	2	608	608
		3	608	608
		4	608	608
	43mils (18ga) 33ksi	2	905	905
		3	905	905
		4	905	905
	54mils (16ga) 50ksi	2	1004	1004
		3	1506	1506
		4	1553	1710
	68mils (14ga) 50ksi	2	1004	1004
		3	1506	1506
		4	1553	1710
97mils (12ga) 50ksi	2	1004	1004	
	3	1506	1506	
	4	1553	1710	
Hilti 0.157" X-U Powder-Actuated Fasteners (PAF) to 3/16" Steel	33mils (20ga) 33ksi	2	608	608
		3	608	608
		4	608	608
	43mils (18ga) 33ksi	2	905	905
		3	905	905
		4	905	905
	54mils (16ga) 50ksi	2	1064	1064
		3	1553	1596
		4	1553	1710
	68mils (14ga) 50ksi	2	1064	1064
		3	1553	1596
		4	1553	1710
97mils (12ga) 50ksi	2	1064	1064	
	3	1553	1596	
	4	1553	1710	
Generic Fasteners to 3/16" Steel	33mils (20ga) 33ksi	n	608	608
	43mils (18ga) 33ksi	n	905	905
	54mils (16ga) 50ksi	n	1553	1710
	68mils (14ga) 50ksi	n	1553	1710
	97mils (12ga) 50ksi	n	1553	1710
Ultimate Clip Capacity	33mils (20ga) 33ksi	—	1825	
	43mils (18ga) 33ksi	—	2715	
	54mils (16ga) 50ksi	—	5130	
	68mils (14ga) 50ksi	—	5130	
	97mils (12ga) 50ksi	—	5130	

Notes:

- 1 Tabulated allowable loads do not include a 1/3 stress increase for wind.
- 2 * - Allowable capacity includes 1/8" service load limit.
- 3 # - Allowable capacity does not include 1/8" service load limit.
- 4 Mechanical fasteners should be attached to the structure in accordance with the manufacturer's instructions. All fasteners were assumed to be installed at a distance of 3/4" from the bend of the structural leg.
- 5 n - Number of generic mechanical fasteners required for connection to be determined by a design professional. Capacity should not exceed tabulated allowable loads.
- 6 Generic fastener capacities were calculated by considering clip-stud interaction, behavior of clip in tension and compression only. The design professional has to detail for clip and desired fastener installation.
- 7 Ultimate clip capacities were tabulated for the purpose of blast loads and they do not assume a safety factor.
- 8 Ultimate clip capacities were calculated by assuming that the structural leg of the clip fastened to 3/16" steel using (4) Buildex #12-24 fasteners or (4) Hilti X-U fasteners.
- 9 It is the responsibility of the design professional to detail the project drawings for proper clip and fastener installation.
- 10 Buildex is a registered trademark of Illinois Tool Works, Inc.
- 11 Hilti is a registered trademark of Hilti Aktiengesellschaft Corporation.