

Header Cripple Stud Clip

Eliminates the header track material and is a economical alternative.

Header Cripple Stud Clips are used with RedHeader PRO™ and HDS® Framing System and remove the need for a header track. The L-shaped clips install on the back side of the cripple stud, therefore shorter length clips do not need to be ordered. These labor time-savers include prepunched holes for quicker screw attachments, and are punched for RedHeader PRO and HDS connections.

PRODUCT DIMENSIONS

1-1/2" x 1-1/2" x 3-3/8"

1-1/2" x 1-1/2" x 3-3/4"

1-1/2" x 1-1/2" x 5-3/4"

1-1/2" x 1-1/2" x 7-3/4"

MATERIAL SPECIFICATIONS

Gauge: 16 gauge (54mils)

Design Thickness: 0.0451 inches

Coating: G90

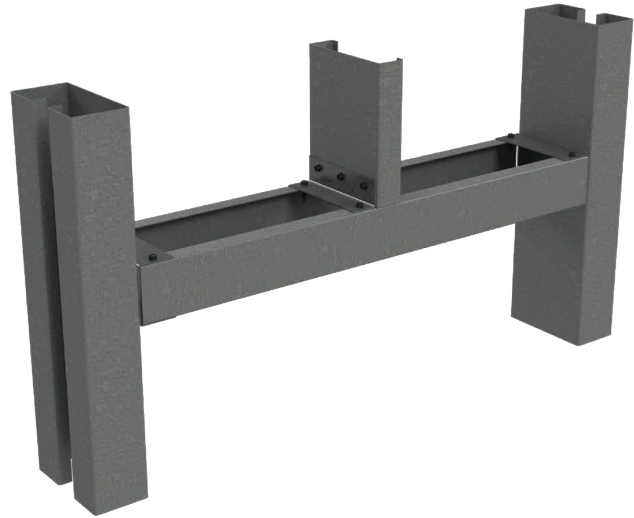
Gauge: 14 gauge (68mils)

Design Thickness: 0.0713 inches

Coating: G90

INSTALLATION

Header Cripple Stud Clips are attached to the cold-formed steel (CFS) framing members using #10 minimum self-drilling screws driven through the clip holes into the steel framing. It is the responsibility of the design engineer to detail the attachment of clips and verify their capacity meets the application. Place the first two screws in each leg in the outermost screw holes. The next screws (if needed) are placed moving from the outermost holes toward the center, symmetrically.



Header Cripple Stud Clip

Product code	Mils (Gauge)	Design Thickness	Size (in)	For Header Size	Pcs./Bucket
RCSC-54-3	54mils (16ga)	0.0566"	1-1/2" x 1-1/2" x 3-3/8	3-5/8" web	400
RCSC-54-4			1-1/2" x 1-1/2" x 3-3/4	4" web	200
RCSC-54-6			1-1/2" x 1-1/2" x 5-3/4	6" web	100
RCSC-54-8			1-1/2" x 1-1/2" x 7-3/4	8" web	100
RCSC-68-3	68mils (14ga)	0.0713"	1-1/2" x 1-1/2" x 3-3/8	3-5/8" web	200
RCSC-68-4			1-1/2" x 1-1/2" x 3-3/4	4" web	200
RCSC-68-6			1-1/2" x 1-1/2" x 5-3/4	6" web	100
RCSC-68-8			1-1/2" x 1-1/2" x 7-3/4	8" web	100

