

1512 S BATAVIA AVENUE  
GENEVA, IL 60134  
630-232-0104

An  ALION Technical Center

RIVERBANK.ALIONSCIENCE.COM

FOUNDED 1918 BY  
WALLACE CLEMENT SABINE

## Test Report

SPONSOR: **ClarkDietrich**  
West Chester, OH

Sound Transmission Loss  
**RAL™-TL19-097**

CONDUCTED: 2019-04-09

Page 1 of 10

ON: Insulated 24 in. on center steel stud gypsum board wall, 1 layer each side, RCSD on source side

### TEST METHODOLOGY

Riverbank Acoustical Laboratories™ is accredited by the U.S. Department of Commerce, National Institute of Standards and Technology (NIST) under the National Voluntary Laboratory Accreditation Program (NVLAP) as an ISO 17025:2005 Laboratory (NVLAP Lab Code: 100227-0) and for this test procedure. The test reported in this document conformed explicitly with ASTM E90-09 (2016): "Standard Test Method for Laboratory Measurement of Airborne Sound Transmission Loss of Building Partitions and Elements." The single number rating of the specimen was calculated according to ASTM E413-16: "Classification for Rating Sound Insulation." A description of the measurement procedure and room specifications is available upon request. The transmission loss values are for a single direction of measurement. The results presented in this report apply to the sample as received from the test sponsor.

### SPECIMEN MEASUREMENTS & TEST CONDITIONS

The test specimen was designated by the sponsor as Insulated 24 in. on center steel stud gypsum board wall, 1 layer each side, RCSD on source side. The building contractor and RAL staff compiled the following construction specification as follows, in order of installation:

#### Plates / Base Track

---

Trade Name:	ProTRAK® 20 (18 mil)
Dimensions:	2 @ 2438.4 mm (96 in.) x 31.75 mm (1.25 in.)
Depth:	92.07 mm (3.625 in.)
Steel Thickness:	Nominal @ 0.46 mm (0.018 in.) Measured @ 0.48 mm (0.019 in.)
Installation:	Friction fit to test frame over foam sill sealer
Overall Weight:	2.95 kg (6.5 lbs)
Mass per Unit Length:	0.60 kg/m (0.41 lbs/ft)

1512 S BATAVIA AVENUE  
GENEVA, IL 60134  
630-232-0104

An  ALION Technical Center

RIVERBANK.ALIONSCIENCE.COM

FOUNDED 1918 BY  
WALLACE CLEMENT SABINE

## Test Report

ClarkDietrich  
2019-04-09

RAL™-TL19-097  
Page 2 of 10

### Studs

---

Trade Name: ProSTUD® 20 (18 mil)  
Dimensions: 5 @ 31.75 mm (1.25 in.) x 2743.2 mm (108 in.)  
Depth: 92.07 mm (3.625 in.)  
Steel Thickness: Nominal @ 0.46 mm (0.018 in.)  
Measured @ 0.48 mm (0.019 in.)  
Installation: Side studs screwed to test frame, other studs floating in track  
Fasteners: Type W bugle head drywall screws, 31.75 mm (1.25 in.) length  
Stud Spacing: 609.6 mm (24 in.) on center  
Overall Weight: 8.62 kg (19 lbs)  
Mass per Unit Length: 0.63 kg/m (0.42 lbs/ft)

*Note: A 6.35 mm (0.25 in.) diameter bead of acoustical sealant was used to seal both sides of the specimen where framing members met the test frame (0.45 kg (1 lbs) total).*

### Source Side

---

#### Resilient Channel

Trade Name: RC Deluxe® Resilient Channel (RCSD)  
Dimensions: 6 @ 2438.4 mm (96 in.) x 63.5 mm (2.5 in.)  
Overall Thickness: 12.7 mm (0.5 in.)  
Installation: Screwed to studs, rows spaced 609.6 mm (24 in.) on center  
Mounted horizontally with resilient flange facing up  
Resilient flange on bottom row facing down  
Fasteners: #8 wafer head stud screw, 12.7 mm (0.5 in.) length  
Overall Weight: 4.76 kg (10.5 lbs)  
Mass per Unit Length: 0.33 kg/m (0.22 lbs/ft)

#### Layer 1

Material: Type X gypsum board  
Dimensions: 1 @ 1219.2 mm (48 in.) x 2743.2 mm (108 in.)  
2 @ 609.6 mm (24 in.) x 2743.2 mm (108 in.)  
Thickness: 15.88 mm (0.625 in.)  
Installation: Screwed to resilient channel  
Fasteners: Type S bugle head drywall screws, 25.4 mm (1 in.) length  
Fastener Spacing: 304.8 mm (12 in.) on center  
Overall Weight: 72.35 kg (159.5 lbs)  
Mass per Unit Area: 10.82 kg/m<sup>2</sup> (2.22 lbs/ft<sup>2</sup>)

1512 S BATAVIA AVENUE  
GENEVA, IL 60134  
630-232-0104

An  ALION Technical Center

RIVERBANK.ALIONSCIENCE.COM

FOUNDED 1918 BY  
WALLACE CLEMENT SABINE

## Test Report

ClarkDietrich  
2019-04-09

RAL™-TL19-097

Page 3 of 10

### Cavity

Material: R-13 unfaced fiberglass insulation batts  
Dimensions: 4 @ 609.6 mm (24 in.) x 2743.2 mm (108 in.)  
Thickness: 88.9 mm (3.5 in.)  
Installation: Friction fit into cavities between studs  
Overall Weight: 8.39 kg (18.5 lbs)  
Density: 14.11 kg/m<sup>3</sup> (0.88 lbs/ft<sup>3</sup>)

### Receive Side

Material: Type X gypsum board  
Dimensions: 2 @ 1219.2 mm (48 in.) x 2743.2 mm (108 in.)  
Thickness: 15.88 mm (0.625 in.)  
Installation: Screwed to studs  
Fasteners: Type S bugle head drywall screws, 28.58 mm (1.125 in.) length  
Fastener Spacing: 203.2 mm (8 in.) on center at board perimeter  
304.8 mm (12 in.) on center at board field  
Overall Weight: 72.12 kg (159 lbs)  
Mass per Unit Area: 10.78 kg/m<sup>2</sup> (2.21 lbs/ft<sup>2</sup>)

*Note: Joints and screw heads on the outermost layers of both sides of the partition were treated with a thin bead of sealant and metal tape (0.23 kg (0.5 lbs) total). Fasteners at the top and bottom tracks were offset to avoid coupling the track to the studs.*

*Gypsum board layers on both sides of the test specimen exhibited extra screw holes from their use in previous tests; these screw holes were treated with sealant and metal tape.*

1512 S BATAVIA AVENUE  
GENEVA, IL 60134  
630-232-0104

An  ALION Technical Center

RIVERBANK.ALIONSCIENCE.COM

FOUNDED 1918 BY  
WALLACE CLEMENT SABINE

## Test Report

ClarkDietrich  
2019-04-09

RAL™-TL19-097

Page 4 of 10

### Overall Specimen Measurements

Dimensions: 2.44 m (96.0 in) wide by 2.74 m (108.0 in) high  
Thickness: 0.14 m (5.375 in)  
Weight: 169.76 kg (374.25 lbs)  
Transmission Area: 6.689 m<sup>2</sup> (72 ft<sup>2</sup>)  
Mass per Unit Area: 25.38 kg/m<sup>2</sup> (5.2 lbs/ft<sup>2</sup>)

### Test Aperture

Size: 2.74 m (9.0 ft.) by 4.27 m (14.0 ft.)  
Filler Wall: Yes  
Sealed: Entire periphery (both sides) with dense mastic

### Test Environment

#### Source Room

Volume: 177.11 m<sup>3</sup>  
Temperature: 23.1 °C ± 0.6 °C  
Relative Humidity: 51.5 % ± 1.0 %

#### Receive Room

Volume: 178.33 m<sup>3</sup>  
Temperature: 23.1 °C ± 0.6 °C  
Relative Humidity: 50.0 % ± 0.0 %

#### Requirements

Temperature: 22° C +/- 2° C, not more than 3° C change over all tests.  
Relative Humidity: ≥ 30%, not more than +/- 3% change over all tests.

1512 S BATAVIA AVENUE  
GENEVA, IL 60134  
630-232-0104

An ALION Technical Center

RIVERBANK.ALIONSCIENCE.COM

FOUNDED 1918 BY  
WALLACE CLEMENT SABINE

## Test Report

ClarkDietrich  
2019-04-09

RAL™-TL19-097

Page 5 of 10



Figure 1 – Specimen mounted in test opening, as viewed from source room

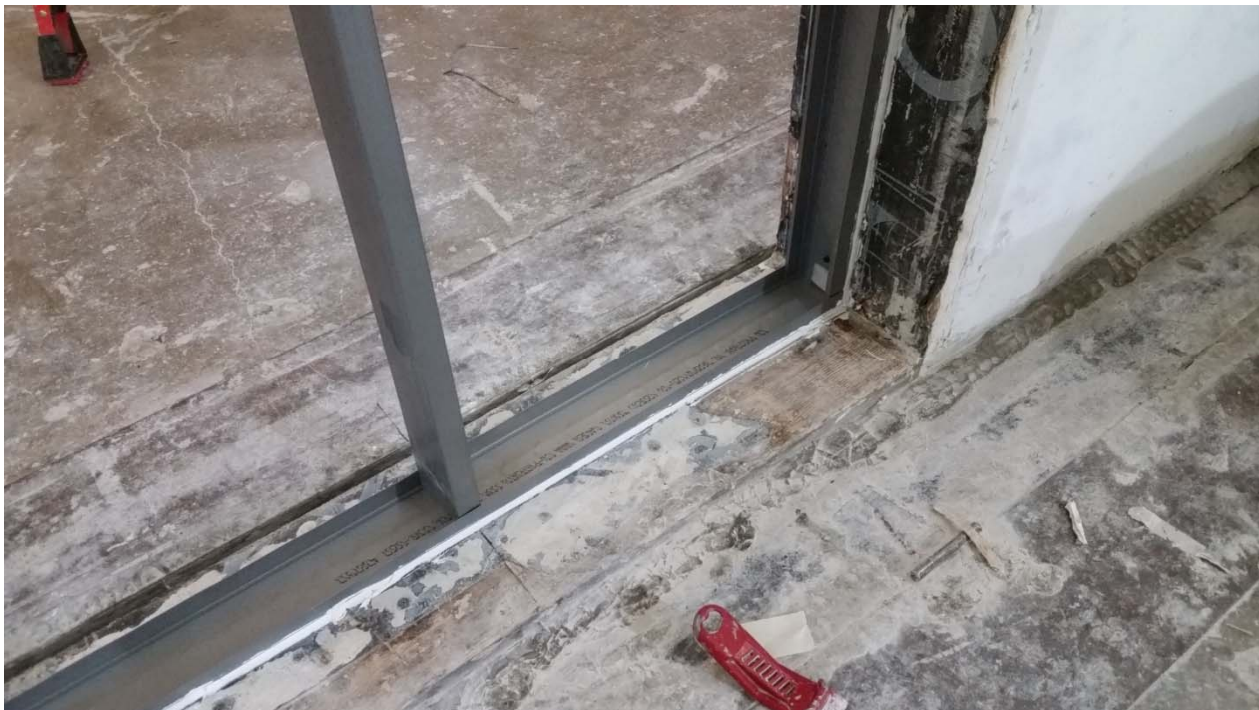


Figure 2 – Detail of installation and sealing of perimeter framing members, floating stud



1512 S BATAVIA AVENUE  
GENEVA, IL 60134  
630-232-0104

An **ALION** Technical Center

RIVERBANK.ALIONSCIENCE.COM

FOUNDED 1918 BY  
WALLACE CLEMENT SABINE

**Test Report**

**ClarkDietrich**  
2019-04-09

**RAL™-TL19-097**

Page 6 of 10



Figure 3 – Stud cavity insulation and resilient channel installed



Figure 4 – Screw hole treatment at receive room gypsum board layer

1512 S BATAVIA AVENUE  
 GENEVA, IL 60134  
 630-232-0104

An ALION Technical Center

RIVERBANK.ALIONSCIENCE.COM

FOUNDED 1918 BY  
 WALLACE CLEMENT SABINE

## Test Report

**ClarkDietrich**  
 2019-04-09

**RAL™-TL19-097**  
 Page 7 of 10

### TEST RESULTS

Sound transmission loss values are tabulated at the eighteen standard frequencies. A graphic presentation of the data and additional information appear on the following pages. The precision of the transmission loss test data is within the limits set by the ASTM Standard E90-09 (2016).

<u>FREQ.</u>	<u>TL</u>	<u>ΔTL</u>	<u>DEF.</u>	<u>FREQ.</u>	<u>TL</u>	<u>ΔTL</u>	<u>DEF.</u>
100	18	0.57	0	800	59	0.16	0
125	31	0.66	6	1000	60	0.13	0
160	36	0.43	4	1250	61	0.10	0
200	40	0.31	3	1600	58	0.11	0
250	46	0.26	0	2000	51	0.10	6
315	50	0.23	0	2500	51	0.08	6
400	53	0.25	0	3150	56	0.08	1
500	56	0.14	0	4000	62	0.07	0
630	58	0.12	0	5000	64	0.10	0

STC=53

### ABBREVIATION INDEX

FREQ. = FREQUENCY, HERTZ  
 TL = TRANSMISSION LOSS, dB  
 ΔTL = 95% CONFIDENCE INTERVAL FOR TL MEASUREMENTS, dB  
 DEF. = DEFICIENCIES, dB BELOW STC CONTOUR (SUM OF DEF = 26)  
 STC = SOUND TRANSMISSION CLASS

Tested by *Marc Sciaky*  
 Marc Sciaky  
 Senior Experimentalist

Report by *Malcolm Kelly*  
 Malcolm Kelly  
 Acoustical Test Engineer

Approved by *Eric P. Wolfram*  
 Eric P. Wolfram  
 Laboratory Manager

1512 S BATAVIA AVENUE  
 GENEVA, IL 60134  
 630-232-0104

An **ALION** Technical Center

RIVERBANK.ALIONSCIENCE.COM

FOUNDED 1918 BY  
 WALLACE CLEMENT SABINE

**Test Report**

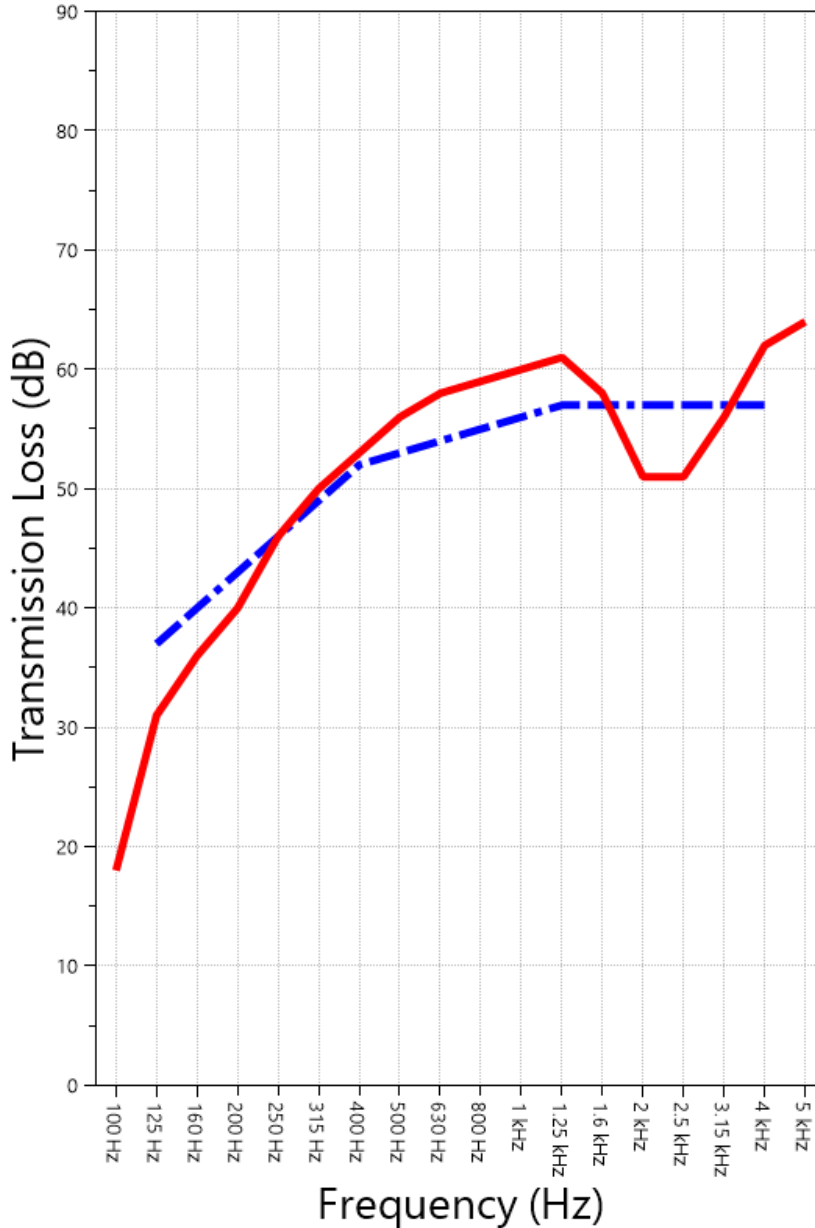
**RAL™-TL19-097**

Page 8 of 10

**ClarkDietrich**  
 2019-04-09

**SOUND TRANSMISSION REPORT**

Insulated 24 in. on center steel stud gypsum board wall, 1 layer each side, RCSD on source side



**STC=53**



**TRANSMISSION LOSS**  
**SOUND TRANSMISSION CLASS CONTOUR**



RIVERBANK ACOUSTICAL LABORATORIES IS ACCREDITED BY NVLAP (LAB CODE 100227-0) FOR ACOUSTICAL TESTING SERVICES IN ACCORDANCE WITH ISO/IEC 17025:2005 AND FOR THIS PROCEDURE. THIS REPORT MUST NOT BE USED BY THE CLIENT TO CLAIM PRODUCT CERTIFICATION, APPROVAL, OR ENDORSEMENT BY RAL, NVLAP, NIST, OR ANY AGENCY OF THE U.S. GOVERNMENT. THIS REPORT SHALL NOT BE MODIFIED WITHOUT THE WRITTEN APPROVAL OF RAL. THE RESULTS REPORTED APPLY ONLY TO THE SPECIFIC SAMPLE SUBMITTED FOR TESTING; RAL ASSUMES NO RESPONSIBILITY FOR THE PERFORMANCE OF ANY OTHER SAMPLE.



1512 S BATAVIA AVENUE  
 GENEVA, IL 60134  
 630-232-0104

An **ALION** Technical Center

RIVERBANK.ALIONSCIENCE.COM

FOUNDED 1918 BY  
 WALLACE CLEMENT SABINE

**Test Report**

**ClarkDietrich**  
 2019-04-09

**RAL™-TL19-097**  
 Page 9 of 10

**APPENDIX A: Extended Frequency Range Data**

Specimen: Insulated 24 in. on center steel stud gypsum board wall, 1 layer each side, RCSD on source side  
 (See Full Report)

*The following non-accredited data were obtained in accordance with ASTM E90-09 (2016), but extend beyond the defined frequency range of 100Hz to 5,000Hz. These unofficial results are representative of the RAL test environment only and intended for research & comparison purposes. Sampling precision observed during this procedure is reported below.*

1/3 Octave Band Center Frequency (Hz)	Sound Transmission Loss (dB)	$\Delta$ TL (Eq. A2.5) (dB)
31.5	16	0.98
40	19	0.63
50	14	0.86
63	8	0.65
80	14	0.38
100	18	0.57
125	31	0.66
160	36	0.43
200	40	0.31
250	46	0.26
315	50	0.23
400	53	0.25
500	56	0.14
630	58	0.12
800	59	0.16
1000	60	0.13
1250	61	0.10
1600	58	0.11
2000	51	0.10
2500	51	0.08
3150	56	0.08
4000	62	0.07
5000	64	0.10
6300	67	0.16
8000	67	0.10
10000	61	0.07
12500	56	0.10



RIVERBANK ACOUSTICAL LABORATORIES IS ACCREDITED BY NVLAP (LAB CODE 100227-0) FOR ACOUSTICAL TESTING SERVICES IN ACCORDANCE WITH ISO/IEC 17025:2005 AND FOR THIS PROCEDURE. THIS REPORT MUST NOT BE USED BY THE CLIENT TO CLAIM PRODUCT CERTIFICATION, APPROVAL, OR ENDORSEMENT BY RAL, NVLAP, NIST, OR ANY AGENCY OF THE U.S. GOVERNMENT. THIS REPORT SHALL NOT BE MODIFIED WITHOUT THE WRITTEN APPROVAL OF RAL. THE RESULTS REPORTED APPLY ONLY TO THE SPECIFIC SAMPLE SUBMITTED FOR TESTING; RAL ASSUMES NO RESPONSIBILITY FOR THE PERFORMANCE OF ANY OTHER SAMPLE.

1512 S BATAVIA AVENUE  
GENEVA, IL 60134  
630-232-0104

An ALION Technical Center

RIVERBANK.ALIONSCIENCE.COM

FOUNDED 1918 BY  
WALLACE CLEMENT SABINE

## Test Report

ClarkDietrich  
2019-04-09

RAL™-TL19-097  
Page 10 of 10

### APPENDIX B: Instruments of Traceability

Specimen: Insulated 24 in. on center steel stud gypsum board wall, 1 layer each side, RCSD on source side  
(See Full Report)

<u>Description</u>	<u>Model</u>	<u>Serial Number</u>	<u>Date of Certification</u>	<u>Calibration Due</u>
System 2	Type 3160-A-042	3160-106974	2018-08-09	2019-08-09
Bruel & Kjaer Mic And Preamp D	Type 4943-B-001	2311440	2018-09-28	2019-09-28
Bruel & Kjaer Pistonphone	Type 4228	2781248	2018-08-06	2019-08-06
EXTECH Hygro 330	SD700	A083330	2018-09-07	2019-09-07
EXTECH Hygro 322	SD700	A083322	2018-09-07	2019-09-07

### APPENDIX C: Revisions to Original Test Report

Specimen: Insulated 24 in. on center steel stud gypsum board wall, 1 layer each side, RCSD on source side (See Full Report)

<u>Date</u>	<u>Revision</u>
2019-04-22	Original report issued

---

END