

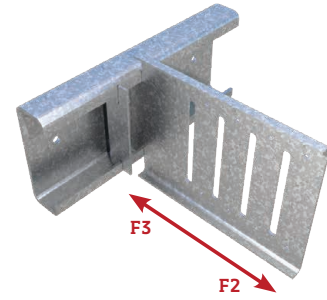
## Drift Rail and Clip - Attachment Using (2) #12-24 Fasteners

**ATTACHMENT TO STRUCTURAL STEEL: #12-24 FASTENERS**  
**ATTACHMENT TO STUD: AS A DEFLECTION CONNECTION**

### Drift Rail and Clip - 12ga Clip / 12ga Rail

#### ALLOWABLE DRIFT RAIL CLIP LOADS USING CLIP AS A DEFLECTION CONNECTION

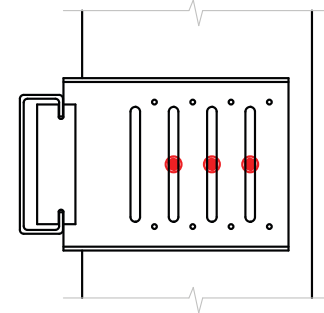
| Clip designation | Stud Mils (Gauge) | Anchor to structure                                | Framing Connection |               | ASD Allowable Loads (lbs) |                  |
|------------------|-------------------|--|--------------------|---------------|---------------------------|------------------|
|                  |                   |  | Screw Pattern      | No. of Screws | F2 (Tension)              | F3 (Compression) |
| DRC3-97          | 33mils (20ga)     | (2) x #12-24 HWH Fasteners to 3/16" ASTM A36 Steel | See Figure         | (2) x #14     | 560                       | 600              |
|                  | 43mils (18ga)     |  |                    | (2) x #14     | 655                       | 670              |
|                  | 54mils (16ga)     |  |                    | (2) x #14     | 1000                      | 970              |
|                  | 68mils (14ga)     |  |                    | (2) x #14     | 1030                      | 1325             |
|                  | 97mils (12ga)     |  |                    | (2) x #14     | 1030                      | 2040             |
| DRC6-97          | 33mils (20ga)     | (2) x #12-24 HWH Fasteners to 3/16" ASTM A36 Steel | See Figure         | (3) x #14     | 560                       | 600              |
|                  | 43mils (18ga)     |  |                    | (3) x #14     | 655                       | 670              |
|                  | 54mils (16ga)     |  |                    | (3) x #14     | 1000                      | 970              |
|                  | 68mils (14ga)     |  |                    | (3) x #14     | 1030                      | 1325             |
|                  | 97mils (12ga)     |  |                    | (3) x #14     | 1030                      | 2040             |
| DRC8-97          | 33mils (20ga)     | (2) x #12-24 HWH Fasteners to 3/16" ASTM A36 Steel | See Figure         | (3) x #14     | 560                       | 620              |
|                  | 43mils (18ga)     |  |                    | (3) x #14     | 655                       | 730              |
|                  | 54mils (16ga)     |  |                    | (3) x #14     | 1000                      | 1060             |
|                  | 68mils (14ga)     |  |                    | (3) x #14     | 1030                      | 1340             |
|                  | 97mils (12ga)     |  |                    | (3) x #14     | 1030                      | 1965             |



### Drift Rail and Clip - 14ga Clip / 12ga Rail

#### ALLOWABLE DRIFT RAIL CLIP LOADS USING CLIP AS A DEFLECTION CONNECTION

| Clip designation | Stud Mils (Gauge) | Anchor to structure                                | Framing Connection |               | ASD Allowable Loads (lbs) |                  |
|------------------|-------------------|--|--------------------|---------------|---------------------------|------------------|
|                  |                   |  | Screw Pattern      | No. of Screws | F2 (Tension)              | F3 (Compression) |
| DRC3-68          | 33mils (20ga)     | (2) x #12-24 HWH Fasteners to 3/16" ASTM A36 Steel | See Figure         | (2) x #14     | 490                       | 440              |
|                  | 43mils (18ga)     |  |                    | (2) x #14     | 540                       | 520              |
|                  | 54mils (16ga)     |  |                    | (2) x #14     | 850                       | 870              |
|                  | 68mils (14ga)     |  |                    | (2) x #14     | 850                       | 1170             |
|                  | 97mils (12ga)     |  |                    | (2) x #14     | 850                       | 1600             |
| DRC6-68          | 33mils (20ga)     | (2) x #12-24 HWH Fasteners to 3/16" ASTM A36 Steel | See Figure         | (3) x #14     | 490                       | 440              |
|                  | 43mils (18ga)     |  |                    | (3) x #14     | 540                       | 520              |
|                  | 54mils (16ga)     |  |                    | (3) x #14     | 850                       | 870              |
|                  | 68mils (14ga)     |  |                    | (3) x #14     | 850                       | 1170             |
|                  | 97mils (12ga)     |  |                    | (3) x #14     | 850                       | 1600             |
| DRC8-68          | 33mils (20ga)     | (2) x #12-24 HWH Fasteners to 3/16" ASTM A36 Steel | See Figure         | (3) x #14     | 490                       | 485              |
|                  | 43mils (18ga)     |  |                    | (3) x #14     | 540                       | 620              |
|                  | 54mils (16ga)     |  |                    | (3) x #14     | 850                       | 900              |
|                  | 68mils (14ga)     |  |                    | (3) x #14     | 850                       | 1105             |
|                  | 97mils (12ga)     |  |                    | (3) x #14     | 850                       | 1710             |



(3) #14 Deflection Screw Pattern  
Shown in a DRC6 Clip

**Notes:**

- 1 Allowable loads (ASD) listed are for Drift Rail Clip where Drift Rail is attached to 3/16" thick ASTM A36 steel using (2) x #12-24 HWH fasteners spaced 2" apart at 6" on center spacing.
- 2 (2) x #12-24 HWH fasteners must be fastened at every 6" o.c. for Drift Rail attachment to 3/16" ASTM A36 steel structure. Other fasteners may be used to achieve full clip capacity but must be designed separately.
- 3 Allowable loads have not been increased for wind, seismic, or other factors.
- 4 Minimum (2) x #14 shouldered screws (for DRC3) and (3) x #14 shouldered screws (for DRC6 and DRC8) must be used to secure the Drift Rail Clip for attachment to stud (#14 shouldered screws provided with each Drift Rail Clip).
- 5 It is the responsibility of the designer to properly detail connections on the contract drawings.

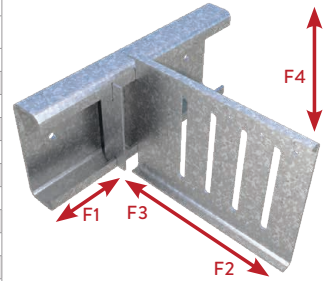
## Drift Rail and Clip - Attachment Using (2) #12-24 Fasteners

**ATTACHMENT TO STRUCTURAL STEEL: #12-24 FASTENERS**  
**ATTACHMENT TO STUD: FIXED CONNECTION W/(4)#10-16**

### Drift Rail and Clip - 12ga Clip / 12ga Rail

### ALLOWABLE DRIFT RAIL CLIP LOADS USING CLIP AS A FIXED CONNECTION

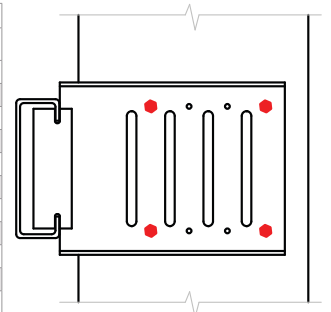
| Clip designation | Stud Mils (Gauge) | Anchor to structure                                | Framing Connection |               | ASD Allowable Loads (lbs) |              |                  |            |
|------------------|-------------------|--|--------------------|---------------|---------------------------|--------------|------------------|------------|
|                  |                   |  | Screw Pattern      | No. of Screws | F1 (In-Plane)             | F2 (Tension) | F3 (Compression) | F4 (Shear) |
| DRC3-97          | 33mils (20ga)     | (2) x #12-24 HWH Fasteners to 3/16" ASTM A36 Steel | See Figure         | (4) x #10     | 155                       | 560          | 600              | 280        |
|                  | 43mils (18ga)     |  |                    | (4) x #10     | 155                       | 655          | 670              | 415        |
|                  | 54mils (16ga)     |  |                    | (4) x #10     | 155                       | 1000         | 970              | 840        |
|                  | 68mils (14ga)     |  |                    | (4) x #10     | 155                       | 1030         | 1325             | 865        |
|                  | 97mils (12ga)     |  |                    | (4) x #10     | 155                       | 1030         | 2040             | 865        |
| DRC6-97          | 33mils (20ga)     | (2) x #12-24 HWH Fasteners to 3/16" ASTM A36 Steel | See Figure         | (4) x #10     | 155                       | 560          | 600              | 235        |
|                  | 43mils (18ga)     |  |                    | (4) x #10     | 155                       | 655          | 670              | 345        |
|                  | 54mils (16ga)     |  |                    | (4) x #10     | 155                       | 1000         | 970              | 705        |
|                  | 68mils (14ga)     |  |                    | (4) x #10     | 155                       | 1030         | 1325             | 725        |
|                  | 97mils (12ga)     |  |                    | (4) x #10     | 155                       | 1030         | 2040             | 725        |
| DRC8-97          | 33mils (20ga)     | (2) x #12-24 HWH Fasteners to 3/16" ASTM A36 Steel | See Figure         | (4) x #10     | 140                       | 560          | 620              | 240        |
|                  | 43mils (18ga)     |  |                    | (4) x #10     | 140                       | 655          | 730              | 360        |
|                  | 54mils (16ga)     |  |                    | (4) x #10     | 140                       | 1000         | 1060             | 725        |
|                  | 68mils (14ga)     |  |                    | (4) x #10     | 140                       | 1030         | 1340             | 745        |
|                  | 97mils (12ga)     |  |                    | (4) x #10     | 140                       | 1030         | 1965             | 745        |



### Drift Rail and Clip - 14ga Clip / 12ga Rail

### ALLOWABLE DRIFT RAIL CLIP LOADS USING CLIP AS A FIXED CONNECTION

| Clip designation | Stud Mils (Gauge) | Anchor to structure                                | Framing Connection |               | ASD Allowable Loads (lbs) |              |                  |            |
|------------------|-------------------|--|--------------------|---------------|---------------------------|--------------|------------------|------------|
|                  |                   |  | Screw Pattern      | No. of Screws | F1 (In-Plane)             | F2 (Tension) | F3 (Compression) | F4 (Shear) |
| DRC3-68          | 33mils (20ga)     | (2) x #12-24 HWH Fasteners to 3/16" ASTM A36 Steel | See Figure         | (4) x #10     | 115                       | 490          | 440              | 280        |
|                  | 43mils (18ga)     |  |                    | (4) x #10     | 115                       | 540          | 520              | 415        |
|                  | 54mils (16ga)     |  |                    | (4) x #10     | 115                       | 850          | 870              | 740        |
|                  | 68mils (14ga)     |  |                    | (4) x #10     | 115                       | 850          | 1170             | 740        |
|                  | 97mils (12ga)     |  |                    | (4) x #10     | 115                       | 850          | 1600             | 805        |
| DRC6-68          | 33mils (20ga)     | (2) x #12-24 HWH Fasteners to 3/16" ASTM A36 Steel | See Figure         | (4) x #10     | 115                       | 490          | 440              | 235        |
|                  | 43mils (18ga)     |  |                    | (4) x #10     | 115                       | 540          | 520              | 345        |
|                  | 54mils (16ga)     |  |                    | (4) x #10     | 115                       | 850          | 870              | 705        |
|                  | 68mils (14ga)     |  |                    | (4) x #10     | 115                       | 850          | 1170             | 725        |
|                  | 97mils (12ga)     |  |                    | (4) x #10     | 115                       | 850          | 1600             | 725        |
| DRC8-68          | 33mils (20ga)     | (2) x #12-24 HWH Fasteners to 3/16" ASTM A36 Steel | See Figure         | (4) x #10     | 120                       | 490          | 485              | 240        |
|                  | 43mils (18ga)     |  |                    | (4) x #10     | 120                       | 540          | 620              | 360        |
|                  | 54mils (16ga)     |  |                    | (4) x #10     | 120                       | 850          | 900              | 725        |
|                  | 68mils (14ga)     |  |                    | (4) x #10     | 120                       | 850          | 1105             | 745        |
|                  | 97mils (12ga)     |  |                    | (4) x #10     | 120                       | 850          | 1710             | 745        |



(4) #10 Screw Pattern Shown in a DRC6 Clip

**Notes:**

- 1 Allowable loads (ASD) listed are for Drift Rail Clip where Drift Rail is attached to 3/16" thick ASTM A36 steel using (2) x #12-24 HWH fasteners spaced 2" apart at 6" on center spacing.
- 2 (2) x #12-24 HWH fasteners must be fastened at every 6" o.c. for Drift Rail attachment to 3/16" ASTM A36 steel structure. Other fasteners may be used to achieve full clip capacity but must be designed separately.
- 3 Allowable loads have not been increased for wind, seismic, or other factors.
- 4 Where fasteners are loaded simultaneously, load interaction must be considered following fastener manufacturer guidelines.
- 5 Use linear load interaction for combined loading conditions.
- 6 Minimum (4) x #10-16 screws must be used to secure the Drift Rail Clip for attachment to stud.
- 7 It is the responsibility of the designer to properly detail connections on the contract drawings.
- 8 F1 (In-Plane) loads are based on using a Drift Locking Clip (DRLC) or Drift Locking Angle (DRLA) restricting Drift Clip lateral movement.

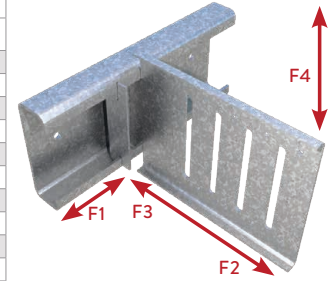
## Drift Rail and Clip - Attachment Using (2) #12-24 Fasteners

**ATTACHMENT TO STRUCTURAL STEEL: #12-24 FASTENERS**  
**ATTACHMENT TO STUD: FIXED CONNECTION W/(8)#10-16**

### Drift Rail and Clip - 12ga Clip / 12ga Rail

#### ALLOWABLE DRIFT RAIL CLIP LOADS USING CLIP AS A FIXED CONNECTION

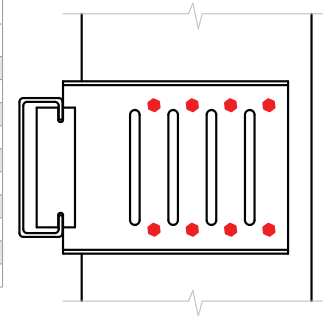
| Clip designation | Stud Mils (Gauge) | Anchor to structure                                | Framing Connection |               | ASD Allowable Loads (lbs) |              |                  |            |
|------------------|-------------------|--|--------------------|---------------|---------------------------|--------------|------------------|------------|
|                  |                   |  | Screw Pattern      | No. of Screws | F1 (In-Plane)             | F2 (Tension) | F3 (Compression) | F4 (Shear) |
| DRC6-97          | 33mils (20ga)     | (2) x #12-24 HWH Fasteners to 3/16" ASTM A36 Steel | See Figure         | (8) x #10     | 155                       | 560          | 600              | 395        |
|                  | 43mils (18ga)     |  |                    | (8) x #10     | 155                       | 655          | 670              | 585        |
|                  | 54mils (16ga)     |  |                    | (8) x #10     | 155                       | 1000         | 970              | 875        |
|                  | 68mils (14ga)     |  |                    | (8) x #10     | 155                       | 1030         | 1325             | 920        |
|                  | 97mils (12ga)     |  |                    | (8) x #10     | 155                       | 1030         | 2040             | 920        |
| DRC8-97          | 33mils (20ga)     | (2) x #12-24 HWH Fasteners to 3/16" ASTM A36 Steel | See Figure         | (8) x #10     | 140                       | 560          | 620              | 375        |
|                  | 43mils (18ga)     |  |                    | (8) x #10     | 140                       | 655          | 730              | 555        |
|                  | 54mils (16ga)     |  |                    | (8) x #10     | 140                       | 1000         | 1060             | 910        |
|                  | 68mils (14ga)     |  |                    | (8) x #10     | 140                       | 1030         | 1340             | 910        |
|                  | 97mils (12ga)     |  |                    | (8) x #10     | 140                       | 1030         | 1965             | 910        |



### Drift Rail and Clip - 14ga Clip / 12ga Rail

#### ALLOWABLE DRIFT RAIL CLIP LOADS USING CLIP AS A FIXED CONNECTION

| Clip designation | Stud Mils (Gauge) | Anchor to structure                                | Framing Connection |               | ASD Allowable Loads (lbs) |              |                  |            |
|------------------|-------------------|--|--------------------|---------------|---------------------------|--------------|------------------|------------|
|                  |                   |  | Screw Pattern      | No. of Screws | F1 (In-Plane)             | F2 (Tension) | F3 (Compression) | F4 (Shear) |
| DRC6-68          | 33mils (20ga)     | (2) x #12-24 HWH Fasteners to 3/16" ASTM A36 Steel | See Figure         | (8) x #10     | 115                       | 490          | 440              | 395        |
|                  | 43mils (18ga)     |  |                    | (8) x #10     | 115                       | 540          | 520              | 585        |
|                  | 54mils (16ga)     |  |                    | (8) x #10     | 115                       | 850          | 870              | 740        |
|                  | 68mils (14ga)     |  |                    | (8) x #10     | 115                       | 850          | 1170             | 740        |
|                  | 97mils (12ga)     |  |                    | (8) x #10     | 115                       | 850          | 1600             | 805        |
| DRC8-68          | 33mils (20ga)     | (2) x #12-24 HWH Fasteners to 3/16" ASTM A36 Steel | See Figure         | (8) x #10     | 120                       | 490          | 485              | 375        |
|                  | 43mils (18ga)     |  |                    | (8) x #10     | 120                       | 540          | 620              | 555        |
|                  | 54mils (16ga)     |  |                    | (8) x #10     | 120                       | 850          | 900              | 800        |
|                  | 68mils (14ga)     |  |                    | (8) x #10     | 120                       | 850          | 1105             | 800        |
|                  | 97mils (12ga)     |  |                    | (8) x #10     | 120                       | 850          | 1710             | 865        |



(8) #10 Screw Pattern Shown in a DRC6 Clip

**Notes:**

- 1 Allowable loads (ASD) listed are for Drift Rail Clip where Drift Rail is attached to 3/16" thick ASTM A36 steel using (2) x #12-24 HWH fasteners spaced 2" apart at 6" on center spacing.
- 2 (2) x #12-24 HWH fasteners must be fastened at every 6" o.c. for Drift Rail attachment to 3/16" ASTM A36 steel structure. Other fasteners may be used to achieve full clip capacity but must be designed separately.
- 3 Allowable loads have not been increased for wind, seismic, or other factors.
- 4 Where fasteners are loaded simultaneously, load interaction must be considered following fastener manufacturer guidelines.
- 5 Use linear load interaction for combined loading conditions.
- 6 Minimum (8) x #10-16 screws must be used to secure the Drift Rail Clip for attachment to stud.
- 7 It is the responsibility of the designer to properly detail connections on the contract drawings.
- 8 F1 (In-Plane) loads are based on using a Drift Locking Clip (DRLC) or Drift Locking Angle (DRLA) restricting Drift Clip lateral movement.