

## Extended FastClip™ Slide Clip

Curtain Wall/Bypass

Vertical building movement up to 3", and commonly used for large standoff conditions.

ClarkDietrich FCEC deflection clips are used to attach exterior curtain wall studs to the building structure and provide for vertical building movement independent of the cold-formed steel framing. The clips are available in standard lengths of 6," 8," 10" and 12" and are ideal for medium to larger standoff conditions. Extended FastClip™ deflection clips install quickly with screws, welds or powder-actuated fasteners, and provide adjustable standoff to ensure a plumb wall plane. Proprietary Deflection Screws are provided with each clip to ensure friction-free sliding.

### MATERIAL SPECIFICATIONS

**Gauge:** 14 gauge (68mils)

**Design Thickness:** 0.0713 inches

**Coating:** G90

**Yield Strength:** 50ksi

**ASTM:** A653/A653M

### PRODUCT DIMENSIONS

6" Extended FastClip: 1-7/8" x 6" x 4-3/4"

8" Extended FastClip: 1-7/8" x 8" x 4-3/4"

10" Extended FastClip: 1-7/8" x 10" x 4-3/4"

12" Extended FastClip: 1-7/8" x 12" x 4-3/4"

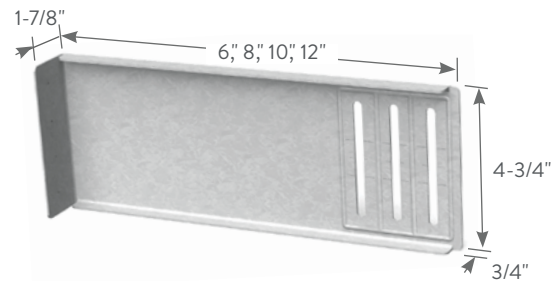
### ALTERNATIVE PRODUCTS

Fast Strut™

Universal Bypass Clip

### INSTALLATION

Connections to the building can be made with screws, welds, powder-actuated fasteners or drill-in concrete anchors. Mechanical fasteners shall be located on the embossed marks given on the scored line of the 1-7/8" flange. Three Proprietary Deflection Screws are used to attach the clip to the cold-formed steel framing. Screws shall be driven through the slotted holes and positioned to allow for the appropriate building deflection.

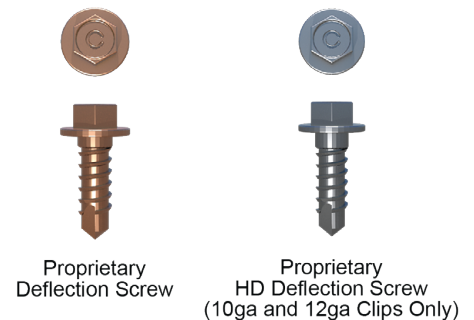


### Extended FastClip™ Slide Clip (FCEC)

Product Code	Product Thickness		Size (in)	Packaging Pcs./Bucket
	Mils (Gauge)	Design Thickness (in)		
FCEC6-68	68mils (14ga)	0.0713	1-7/8 x 6 x 4-3/4	25
FCEC8-68	68mils (14ga)	0.0713	1-7/8 x 8 x 4-3/4	25
FCEC10-68	68mils (14ga)	0.0713	1-7/8 x 10 x 4-3/4	25
FCEC12-68	68mils (14ga)	0.0713	1-7/8 x 12 x 4-3/4	25
FCEC8-97	97mils (12ga)	0.1017	1-7/8 x 8 x 4-3/4	25

Includes 80 Proprietary Deflection Screws for 14ga clip and 80 Proprietary HD Deflection Screw for 12ga clip per carton.

Intertek CCRR-0208  
U.S. Patent No. 6,688,069



Extended FastClip™ Slide Clip

Curtain Wall/Bypass

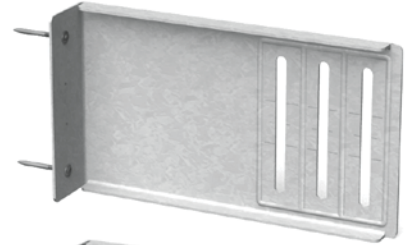
Extended FastClip™ (FCEC) Allowable Loads (lbs)

Anchor Type	Stud Thickness / Yield Strength	No. Anchors to Structure	Allowable Load (lbs)
Buildex #12-24 Tek 5 Self-Drilling Screws to 3/16" Steel	33mils (20ga) 33ksi	2	689
		3	689
		4	689
	43mils (18ga) 33ksi	2	852
		3	852
		4	852
	54mils (16ga) 50ksi	2	852
		3	852
		4	852
	68mils (14ga) 50ksi	2	852
		3	852
		4	852
97mils (12ga) 50ksi	2	852	
	3	852	
	4	852	
PAF to 3/16" Steel*	33mils (20ga) 33ksi	2	689
		3	689
		4	689
	43mils (18ga) 33ksi	2	510
		3	765
		4	852
	54mils (16ga) 50ksi	2	852
		3	852
		4	852
	68mils (14ga) 50ksi	2	852
		3	852
		4	852
97mils (12ga) 50ksi	2	852	
	3	852	
	4	852	

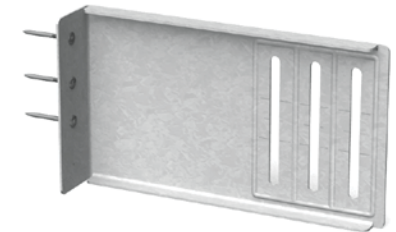
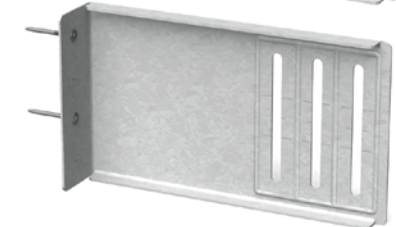
\*See General Note #6 on page 7 for the definition of PAF, minimum requirements and other additional information.

Notes:

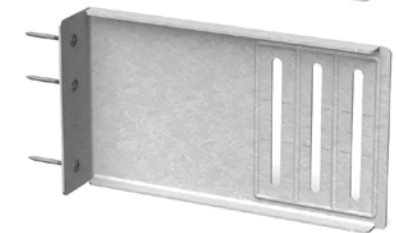
- 1 The 1/3 stress increase for wind shall not be used.
- 2 Attach building anchors to the structure according to the manufacturer's instructions. Anchors shall be installed through the embossments on the scored line of the clip as shown to the right. In no case shall anchors be installed more than 3/4" from the bend on the short leg of the clip. In cases of discrepancy between this information and the design engineer's details, the design engineer's details shall be followed.
- 3 It is the responsibility of the design professional to detail the project drawings for proper clip installation.
- 4 For connections to concrete, or other technical assistance, contact ClarkDietrich at 888-437-3244.
- 5 Buildex is a registered trademark of Illinois Tool Works, Inc.



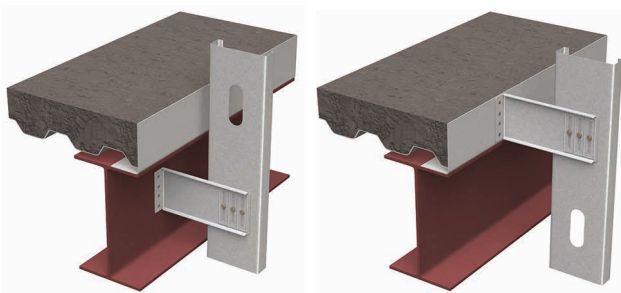
Location Options with (2) Anchors



Location Options with (3) Anchors



(4) Anchors



## 8" 97mils Extended FastClip™ Slide Clip

## 12ga Extended FastClip (FCEC) Allowable Loads (lbs)

Anchor Type	Stud Thickness / Yield Strength	No. Anchors to Structure	Allowable Load* (lbs)	Allowable Load <sup>#</sup> (lbs)
Weld (Fillet/ Flare Groove) E60XX	33mils (20ga) 33ksi	(3) 1" x 1/16"	608	608
	43mils (18ga) 33ksi	(3) 1" x 1/16"	905	905
	54mils (16ga) 50ksi	(3) 1" x 1/16"	1838	1838
	68mils (14ga) 50ksi	(3) 1" x 1/16"	2180	2180
	97mils (12ga) 50ksi	(3) 1" x 1/16"	2587	2587
Buildex #12-24 Self-Drilling Screws to 3/16" Steel	33mils (20ga) 33ksi	2	608	608
		3	608	608
		4	608	608
	43mils (18ga) 33ksi	2	905	905
		3	905	905
		4	905	905
	54mils (16ga) 50ksi	2	1004	1004
		3	1261	1506
		4	1261	1838
	68mils (14ga) 50ksi	2	1004	1004
		3	1261	1506
		4	1261	2008
97mils (12ga) 50ksi	2	1004	1004	
	3	1261	1506	
	4	1261	2008	
Hilti 0.157" X-U Powder-Actuated Fasteners (PAF) to 3/16" Steel	33mils (20ga) 33ksi	2	608	608
		3	608	608
		4	608	608
	43mils (18ga) 33ksi	2	905	905
		3	905	905
		4	905	905
	54mils (16ga) 50ksi	2	1064	1064
		3	1261	1596
		4	1261	1838
	68mils (14ga) 50ksi	2	1064	1064
		3	1261	1596
		4	1261	2129
97mils (12ga) 50ksi	2	1064	1064	
	3	1261	1596	
	4	1261	2129	
Generic Fasteners to 3/16" Steel	33mils (20ga) 33ksi	n	608	608
	43mils (18ga) 33ksi	n	905	905
	54mils (16ga) 50ksi	n	1261	1835
	68mils (14ga) 50ksi	n	1261	2180
	97mils (12ga) 50ksi	n	1261	2587
Ultimate Clip Capacity	33mils (20ga) 33ksi	—	—	1825
	43mils (18ga) 33ksi	—	—	2715
	54mils (16ga) 50ksi	—	—	5514
	68mils (14ga) 50ksi	—	—	6541
	97mils (12ga) 50ksi	—	—	7762

**Notes:**

- 1 Tabulated allowable loads do not include a 1/3 stress increase for wind.
- 2 \* - Allowable capacity includes 1/8" service load limit.
- 3 # - Allowable capacity does not include 1/8" service load limit.
- 4 Allowable weld capacities were calculated by assuming 3 x 1" long welds at the ends and center of the clip bend.
- 5 Listed weld capacities were calculated assuming an E60XX electrode.
- 6 Mechanical fasteners should be attached to the structure in accordance with the manufacturer's instructions. All fasteners were assumed to be installed at a distance of 3/4" from the bend of the structural leg.
- 7 Generic fastener capacities were calculated by considering clip-stud interaction, behavior of clip in tension and compression only. The design professional has to detail for clip and desired fastener installation.
- 8 n - Number of generic mechanical fasteners required for connection to be determined by a design professional. Capacity should not exceed tabulated allowable loads.
- 9 Ultimate clip capacities were tabulated for the purpose of blast loads and they do not assume a safety factor.
- 10 Ultimate clip capacities were calculated by assuming 3 x 1" long weld at the structural leg of the clip (clip bend) welded to 3/16" steel.
- 11 It is the responsibility of the design professional to detail the project drawings for proper clip and fastener installation.
- 12 Buildex is a registered trademark of Illinois Tool Works, Inc.
- 13 Hilti is a registered trademark of Hilti Aktiengesellschaft Corporation.